

Palo Alto County, Iowa
Iowa North Zone (1401)
Horiz. Datum: NAD83(1996)
Vert. Datum: NAVD 1988
US Survey Feet
2005

Point Name: **7076**

Designation: 7076 Clay Co GPS Control Point (Set by Deni Assoc. Inc. in 1997)

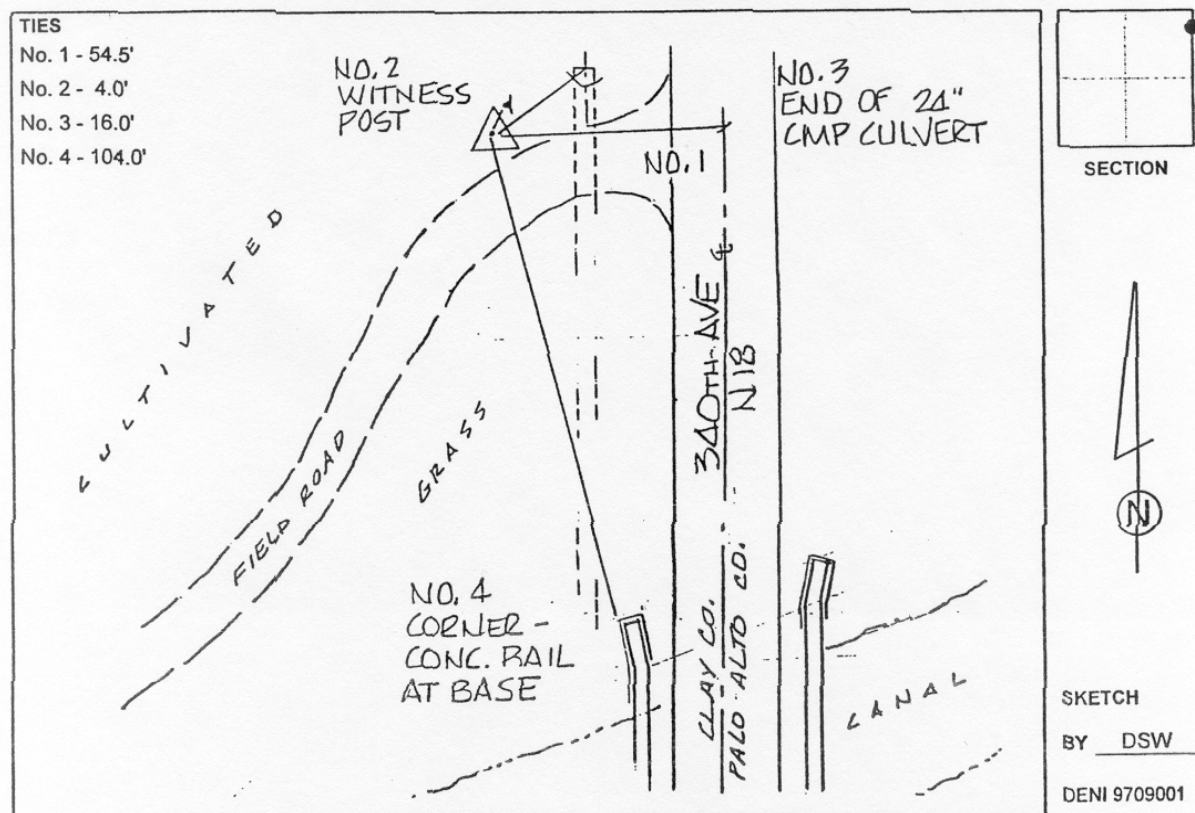
Northing: **3875912.37**sft Easting: **4543818.35**sft

Orthometric Height: **1375.70**sft Ellipsoid Height: **1281.41**sft **Geoid03**

Latitude: **43°07'27.24343"N** Longitude: **94°54'49.64944"W**

Mapping Angle: **-0°57'29"** Combination Scale Factor: **0.999915950**

Monument Type: 3-1/4" Aluminum disk set in poured-in-place concrete monument with 10" PVC collar.



This document was prepared by DCI and GBC for use by Palo Alto County, Iowa.