

Palo Alto County, Iowa
 Iowa North Zone (1401)
 Horiz. Datum: NAD83(1996)
 Vert. Datum: NAVD 1988
 US Survey Feet
2005

Point Name: **7077**

Designation: 7077 Clay Co GPS Control Point (Set by Deni Assoc. Inc. in 1997)

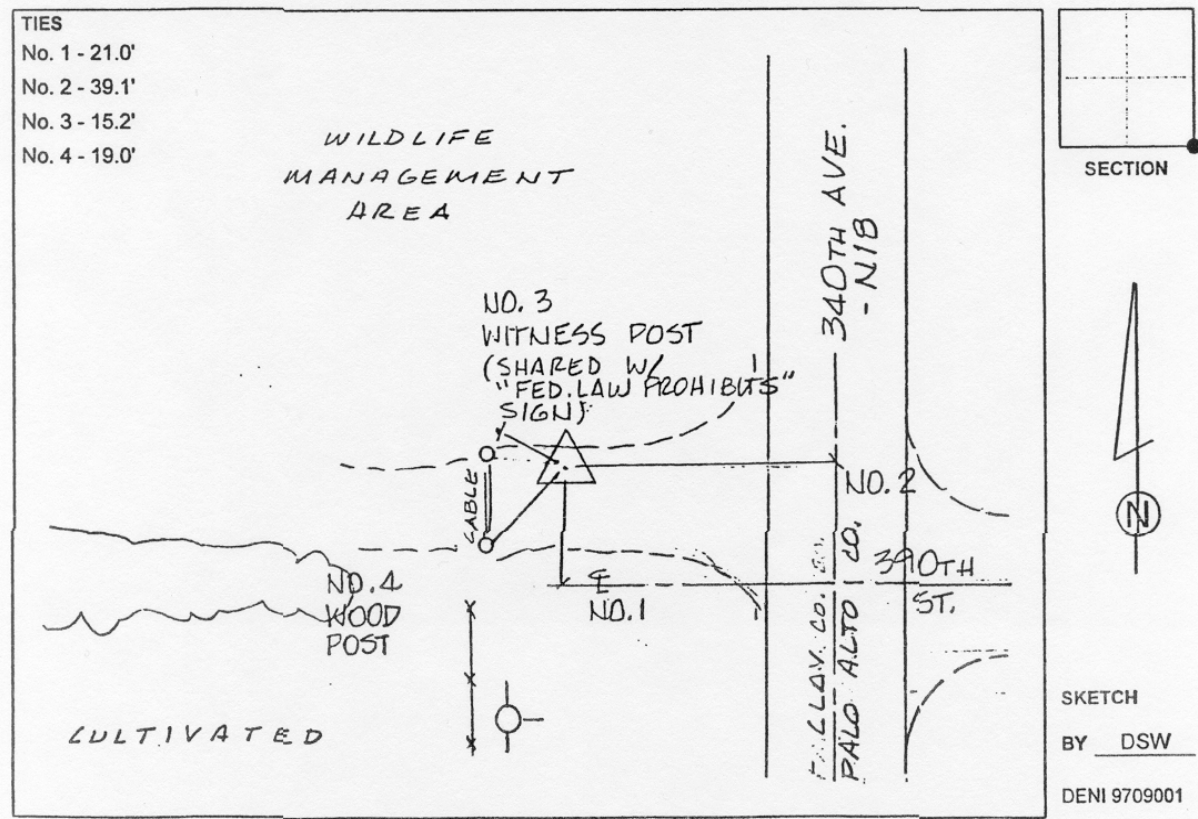
Northing: **3860933.06**sft Easting: **4543584.75**sft

Orthometric Height: **1412.69**sft Ellipsoid Height: **1318.27**sft **Geoid03**

Latitude: **43°04'59.27119"N** Longitude: **94°54'49.42132"W**

Mapping Angle: **-0°57'29"** Combination Scale Factor: **0.999908730**

Monument Type: 3-1/4" Aluminum disk set in poured-in-place concrete monument with 10" PVC collar.



This document was prepared by DCI and GBC for use by Palo Alto County, Iowa.