

Palo Alto County, Iowa
 Iowa North Zone (1401)
 Horiz. Datum: NAD83(1996)
 Vert. Datum: NAVD 1988
 US Survey Feet
2005

Point Name: **7078**

Designation: 7078 Clay Co GPS Control Point (Set by Deni Assoc. Inc. in 1997)

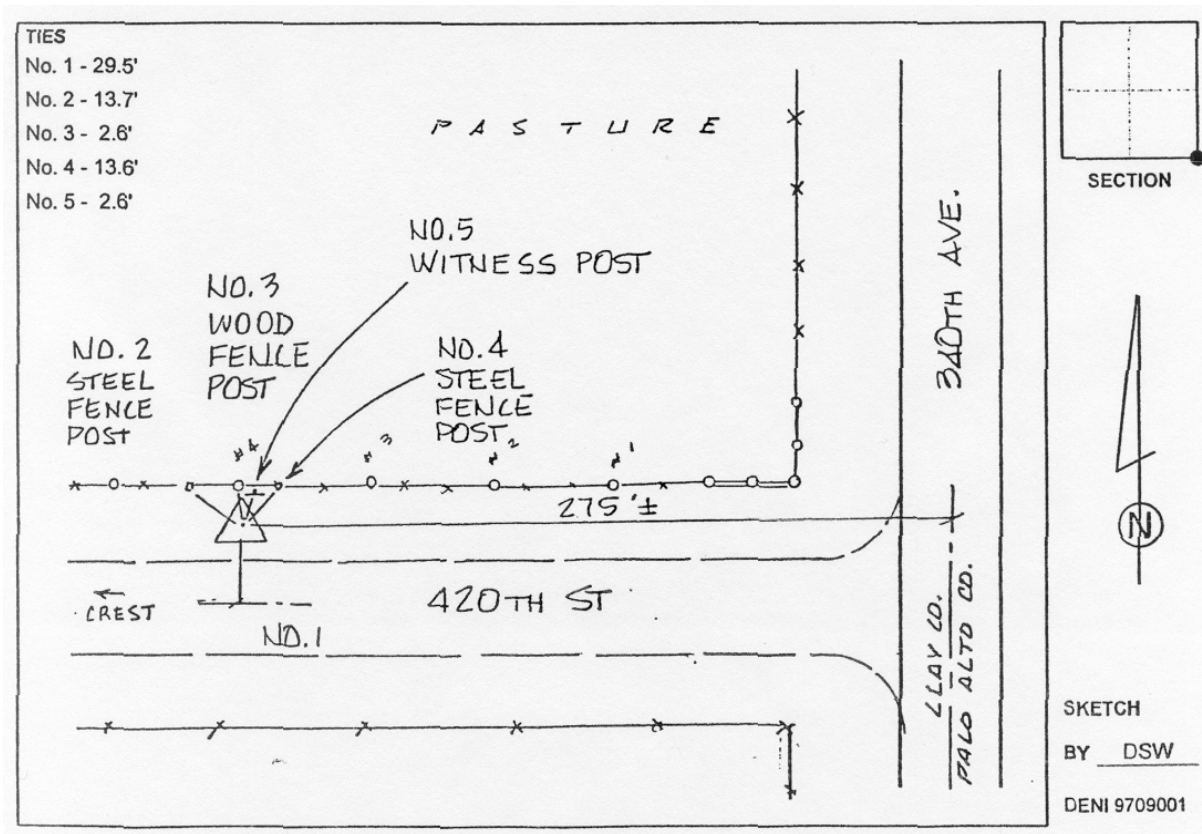
Northing: **3844942.91**sft Easting: **4543064.31**sft

Orthometric Height: **1368.11**sft Ellipsoid Height: **1273.75**sft **Geoid03**

Latitude: **43°02'21.26660"N** Longitude: **94°54'52.82790"W**

Mapping Angle: **-0°57'32"** Combination Scale Factor: **0.999905590**

Monument Type: 3-1/4" Aluminum disk set in poured-in-place concrete monument with 10" PVC collar.



This document was prepared by DCI and GBC for use by Palo Alto County, Iowa.