

Palo Alto County, Iowa
Iowa North Zone (1401)
Horiz. Datum: NAD83(1996)
Vert. Datum: NAVD 1988
US Survey Feet
2005

Point Name: **7079**

Designation: 7079 Clay Co GPS Control Point (Set by Deni Assoc. Inc. in 1997)

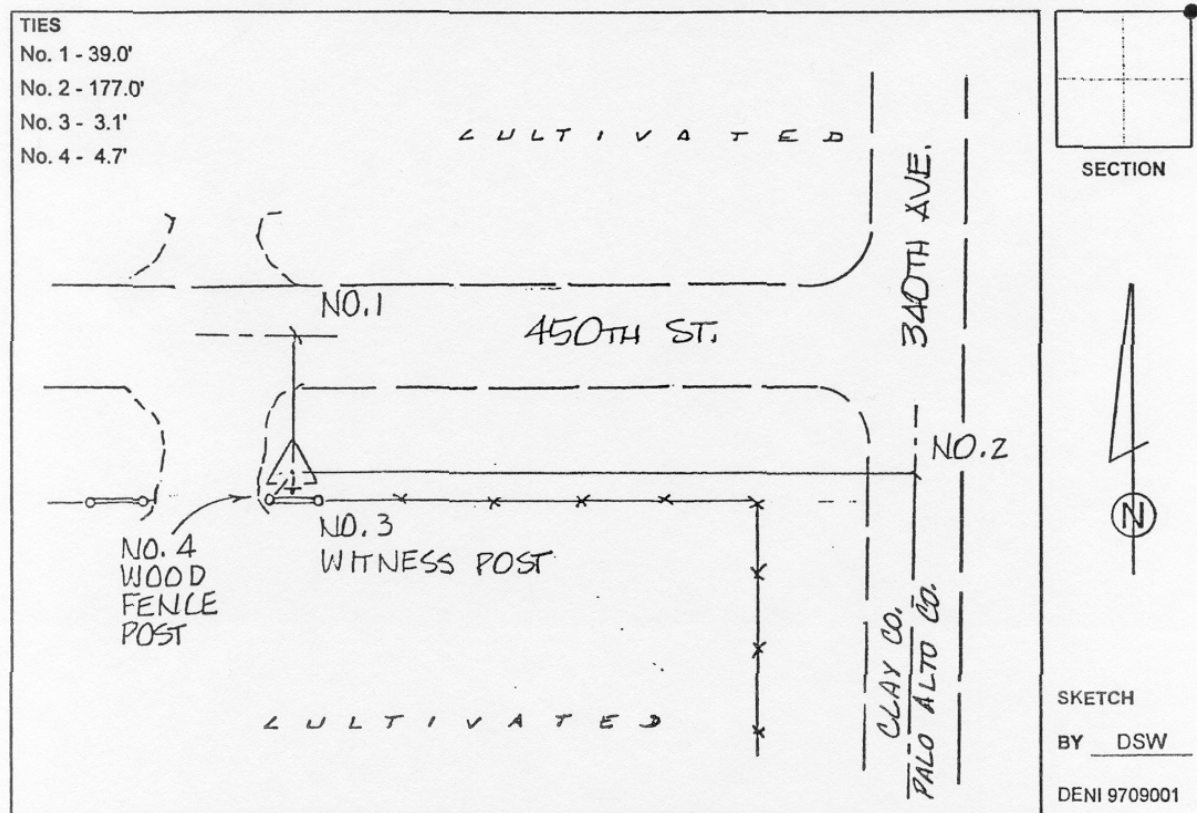
Northing: **3829058.78**sft Easting: **4542835.19**sft

Orthometric Height: **1381.91**sft Ellipsoid Height: **1287.57**sft **Geoid03**

Latitude: **42°59'44.35523"N** Longitude: **94°54'52.33399"W**

Mapping Angle: **-0°57'31"** Combination Scale Factor: **0.999900290**

Monument Type: 3-1/4" Aluminum disk set in poured-in-place concrete monument with 10" PVC collar.



This document was prepared by DCI and GBC for use by Palo Alto County, Iowa.