

Palo Alto County, Iowa
 Iowa North Zone (1401)
 Horiz. Datum: NAD83(1996)
 Vert. Datum: NAVD 1988
 US Survey Feet
2005

Point Name: **7081**

Designation: 7081 Clay Co GPS Control Point (Set by Deni Assoc. Inc. in 1997)

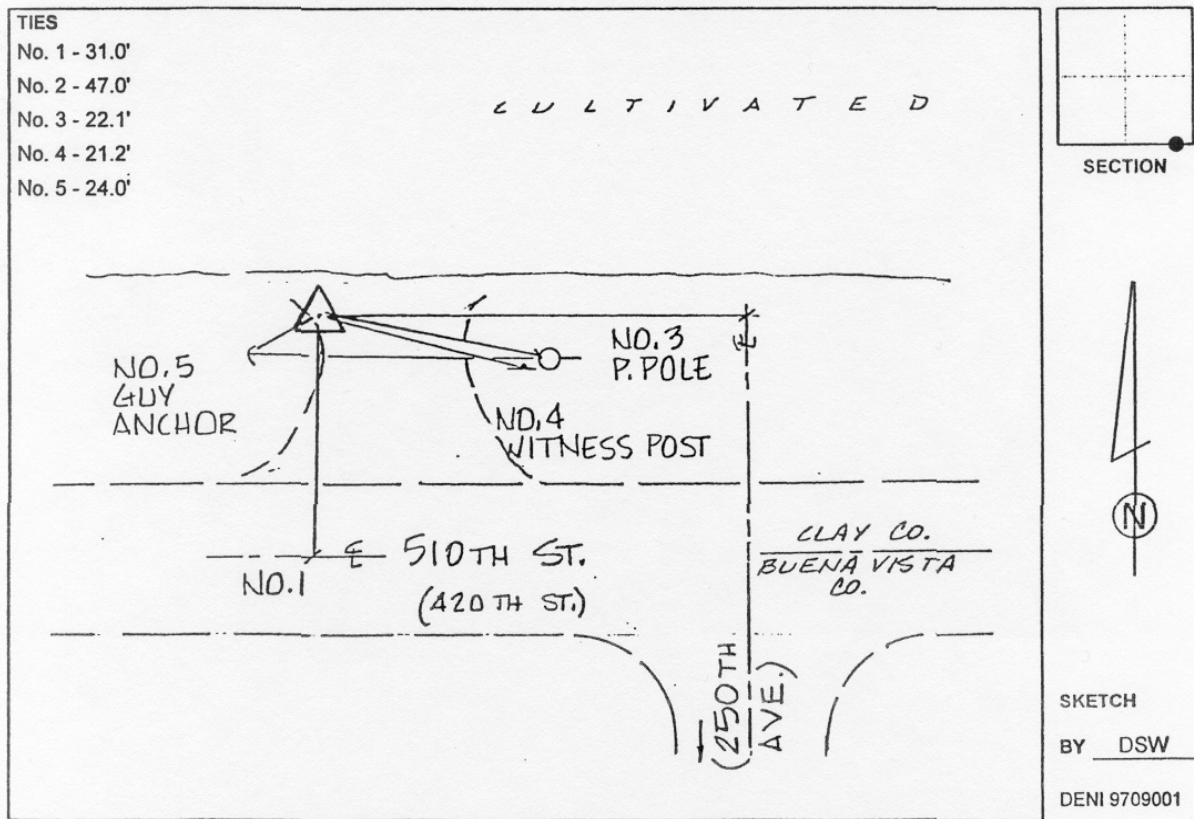
Northing: **3797770.38sft** Easting: **4541976.59sft**

Orthometric Height: **1362.32sft** Ellipsoid Height: **1267.98sft** **Geoid03**

Latitude: **42°54'35.20002"N** Longitude: **94°54'56.83531"W**

Mapping Angle: **-0°57'34"** Combination Scale Factor: **0.999893780**

Monument Type: 3-1/4" Aluminum disk set in poured-in-place concrete monument with 10" PVC collar.



This document was prepared by DCI and GBC for use by Palo Alto County, Iowa.