

1995
PLYMOUTH COUNTY, IOWA
IOWA NORTH ZONE(1401)
NAD_83

POINT NUMBER: 015

NORTHING:(FT) 3793533.42 EASTING:(FT) 4099107.22

NORTHING:(M) 1156271.299 EASTING:(M) 1249410.379

ELEVATION:(FT) 1205.78 NAVD_88

ELEVATION:(M) 367.522 NAVD_88

LATITUDE: 42:51'57.37582" N LONGITUDE: 96:34'02.41765" W

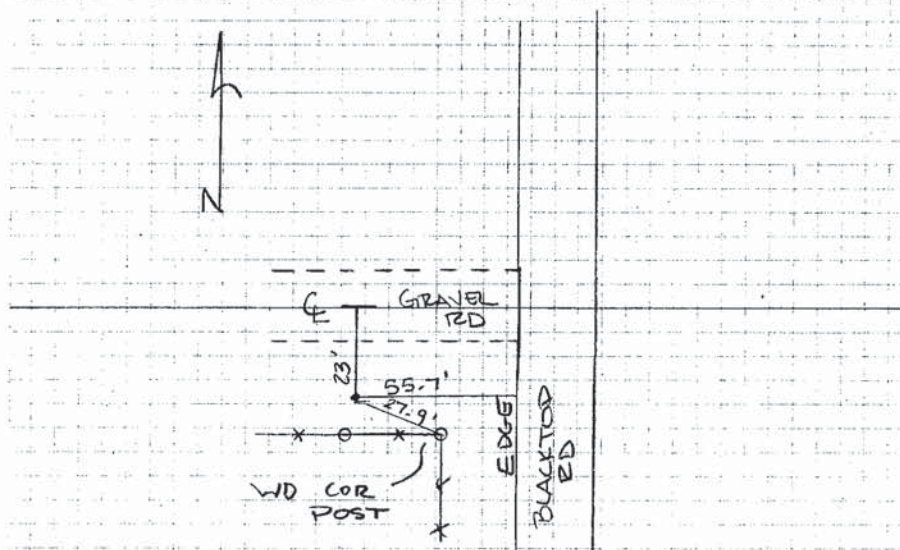
THETA: -2:04'43.938" COMBINATION FACTOR: 0.999893668

DESIGNATION: PLYMOUTH CO GPS CONTROL PT 95

MONUMENT TYPE: 5/8" dia driven aluminum rod with 2 1/2" aluminum survey cap and permanent magnet encased in a 5" dia PVC pipe with access cover. Approx. 6" below the surface of the ground.

TO REACH: 25 ft. S of gravel road, 60 ft. W of blacktop road, (near the NE corner of Sec 24-T93N-R49W)

PRINTED September 12, 1995



NEAR NE COR
SEC 24 T93N R49W

CP 015