

# LAND CORNERS AND HORIZONTAL CONTROL POINTS

DATE 3-6-90 M. J. HARDEN ASSOC., INC. A.P.I. JOB NO \_\_\_\_\_

M. J. H. JOB NO. 6805-00

POINT NAME OR DESIGNATION GPS-4

POINT NO. \_\_\_\_\_, SEC. 18, T. 79, R. 23

ESTABLISHED BY: M. J. HARDEN ASSOC. DATE: APRIL 1987

RECOVERED BY: \_\_\_\_\_ DATE: \_\_\_\_\_

COORDINATES: N 603988.398, E 1618247.587 (NAD 1983)  
 ( IOWA STATE PLANE COORDINATE SYSTEM, SOUTH ZONE)

COORDINATES: N \_\_\_\_\_, E \_\_\_\_\_  
 ( \_\_\_\_\_ STATE PLANE MODIFIED GRID COORDINATE SYSTEM \_\_\_\_\_ ZONE)

COORDINATES: N \_\_\_\_\_, E \_\_\_\_\_  
 (INDEPENDENT GRID COORDINATE SYSTEM)

ELEVATION FACTOR \_\_\_\_\_ SCALE FACTOR \_\_\_\_\_  
 COMBINED ADJUSTMENT FACTOR \_\_\_\_\_

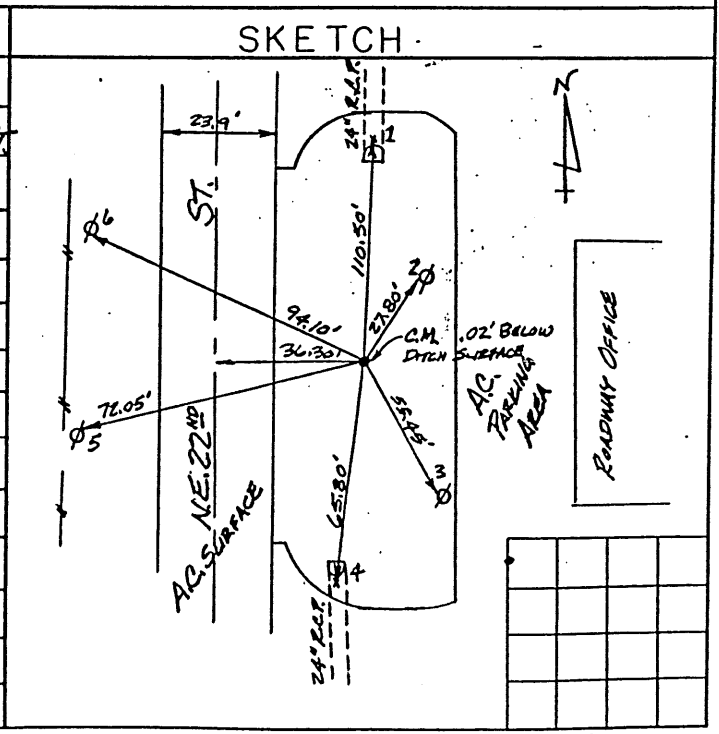
REF. PT.	AZIMUTH	DISTANCE	REFERENCES
No. 1	N.N.E.	110.50'	"X" CUT IN TOP OF S. END OF 24" R.C.P.
No. 2	N.E.	27.80'	"X" NAILS IN N.W. FACE OF POWER POLE
No. 3	S.E.	55.45'	"X" NAILS IN S.W. FACE OF POWER POLE
No. 4	S.S.W.	65.80'	"X" CUT IN TOP OF N. END OF 24" R.C.P.
No. 5	W.S.W.	72.05'	"X" NAILS IN N. FACE OF POWER POLE
No. 6	N.W.	94.10'	"X" NAILS IN S. FACE OF POWER POLE

**DESCRIPTION**

MARK: CONC. MON. WITH CAP

LOCATION: E. SIDE OF NE 22<sup>ND</sup> ST  
IN FRONT ROADWAY OFFICE IN  
BOTTOM OF DITCH - 0.2' BELOW  
SURFACE

**SKETCH**



CLOTH TARGET