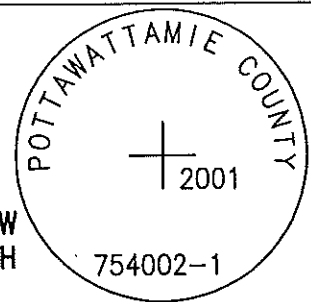


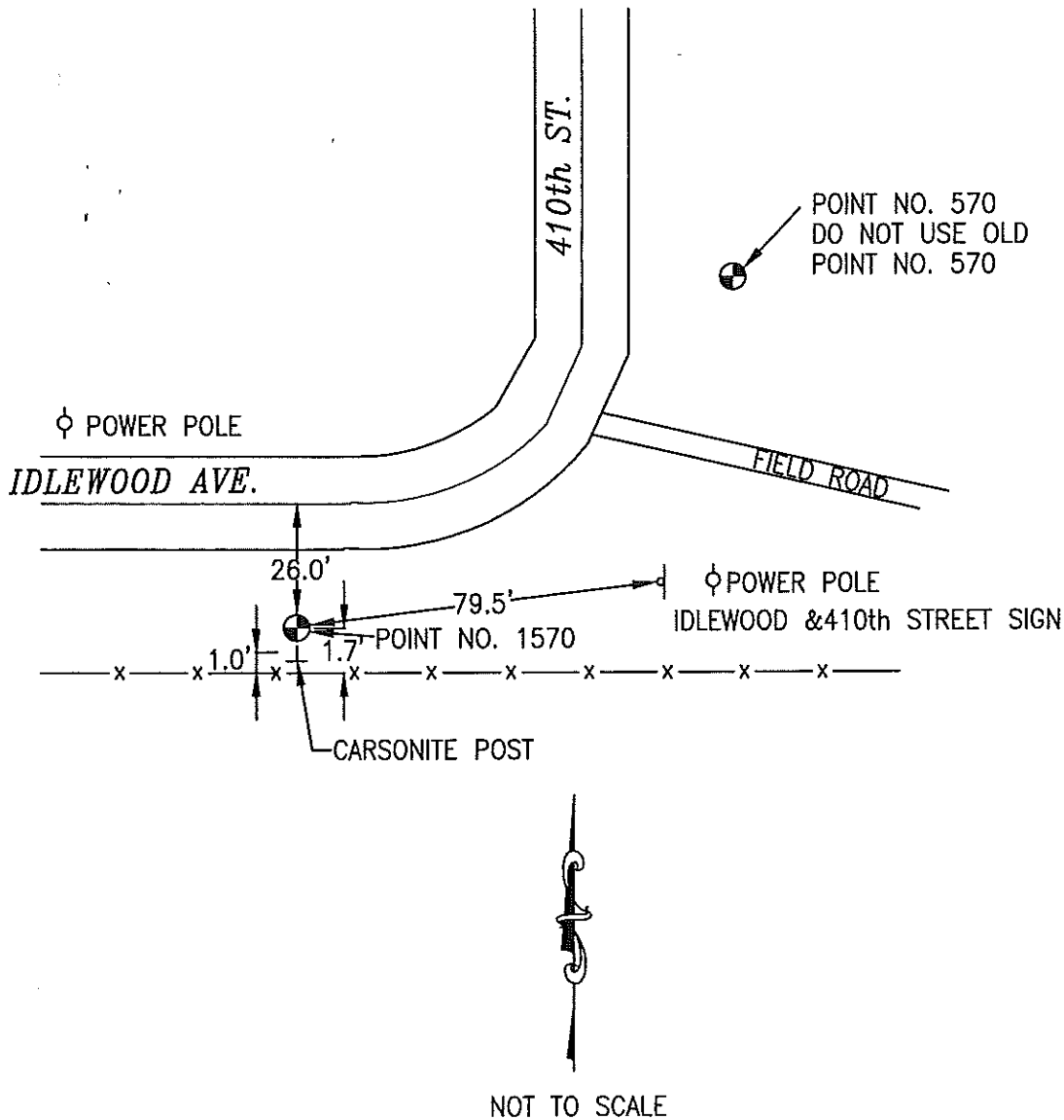
1570

754002-1 2001



SET 3/4 INCH DIAMETER ROD WITH 3-1/4 INCH DIAMETER CAP, IN MONUMENT BOX, 0.3 FEET BELOW GROUND, STAMPED "POTTAWATTAMIE COUNTY, 754002-1 2001". LOCATED APPROXIMATELY AT THE INTERSECTION OF IDLEWOOD AVE. AND 410TH STREET, 26.0 FEET SOUTH OF CENTERLINE IDLEWOOD AVE., 79.5 FEET SW OF STREET INTERSECTION SIGN, 1.7 FEET NORTH OF FENCE LINE, 1.0 FEET NORTH OF CARSONITE POST. ON THE OAKLAND 7.5 MINUTE QUADRANGLE

PT#	NAME OR DESIGNATION	GEODETTIC NAD83 (1996)		HEIGHT ELLIPSOID METERS	SP NAD83 (1996) IOWA SOUTH HEIGHT		SP NAD83 (1996) IOWA SOUTH HEIGHT			
		LATITUDE (North) DEG MIN SEC	LONGITUDE (West) DEG MIN SEC		NORTHING METERS	EASTING METERS	NAVD88 METERS	NORTHING US FEET	EASTING US FEET	NAVD88 US FEET
1570	754002-1 2001	41 19 55.59263	95 24 13.52243	303.69	149673.226	340854.332	331.35	491052.91	1117630.09	1087.1



LOCATION DIAGRAM
 POTTAWATTAMIE COUNTY IOWA
 GIS Mapping Project
 GPS Survey Report

MERRICK
 Engineers & Architects
 2450 S. Pearl Street Aurora, Colorado 80014 (303)751-0741
 Job Number: 50013142
 Date: September 11, 2001