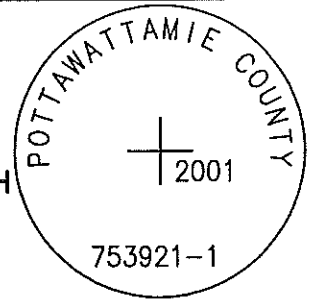


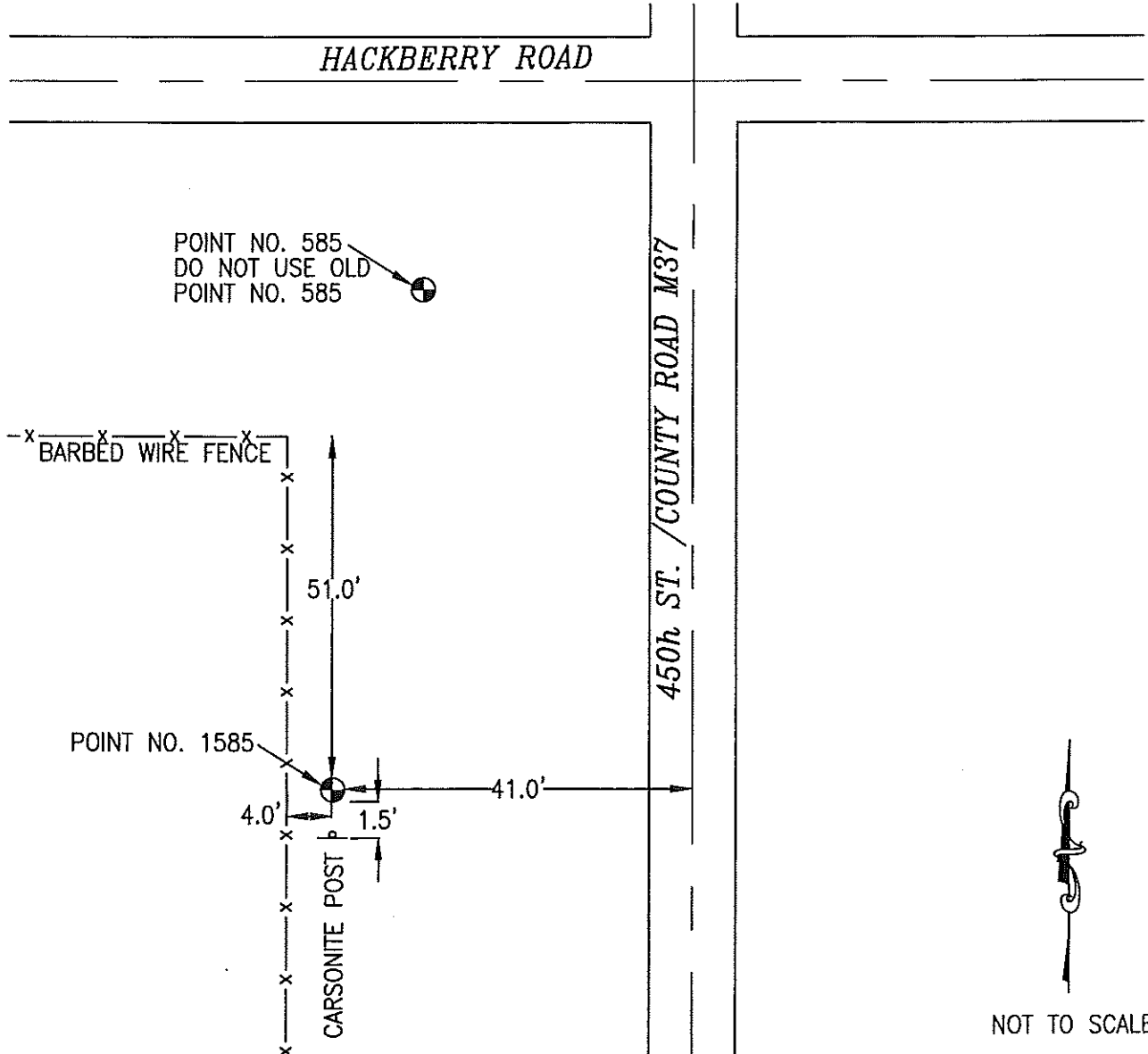
1585

753921-1 2001

SET 3/4 INCH DIAMETER ROD WITH 3-1/4 INCH DIAMETER CAP, IN MONUMENT BOX, 0.5 BELOW GROUND, STAMPED "POTTAWATTAMIE COUNTY, 753921-1 2001". LOCATED APPROXIMATELY AT THE INTERSECTION OF HACKBERRY ROAD AND 450TH STREET, 4 FEET EAST OF FENCE LINE, 51 FEET SOUTH OF FENCE CORNER, 41 FEET WEST OF CENTERLINE 450TH STREET, 1.5 FEET NORTH OF CARSONITE POST. ON THE AVOCA SE 7.5 MINUTE QUADRANGLE

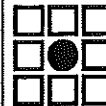


PT#	NAME OR DESIGNATION	GEODETTIC NAD83 (1996)			HEIGHT ELLIPSOID METERS	SP NAD83 (1996) IOWA SOUTH			SP NAD83 (1996) IOWA SOUTH		
		LATITUDE (North) DEG MIN SEC	LONGITUDE (West) DEG MIN SEC	NORTHING METERS		EASTING METERS	HEIGHT NAVD88 METERS	NORTHING US FEET	EASTING US FEET	HEIGHT NAVD88 US FEET	
1585	753921-1 2001	41 17 19.57838	95 19 40.08412	360.22	144725.124	346909.743	387.92	474819.01	1138153.05	1272.7	



NOT TO SCALE

LOCATION DIAGRAM
 POTTAWATTAMIE COUNTY IOWA
 GIS Mapping Project
 GPS Survey Report



MERRICK

Engineers & Architects

2450 S. Peoria Street Aurora, Colorado 80014 (303)751-0741

Job Number: 50013142

Date: September 11, 2001