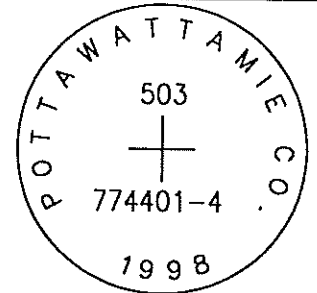


503

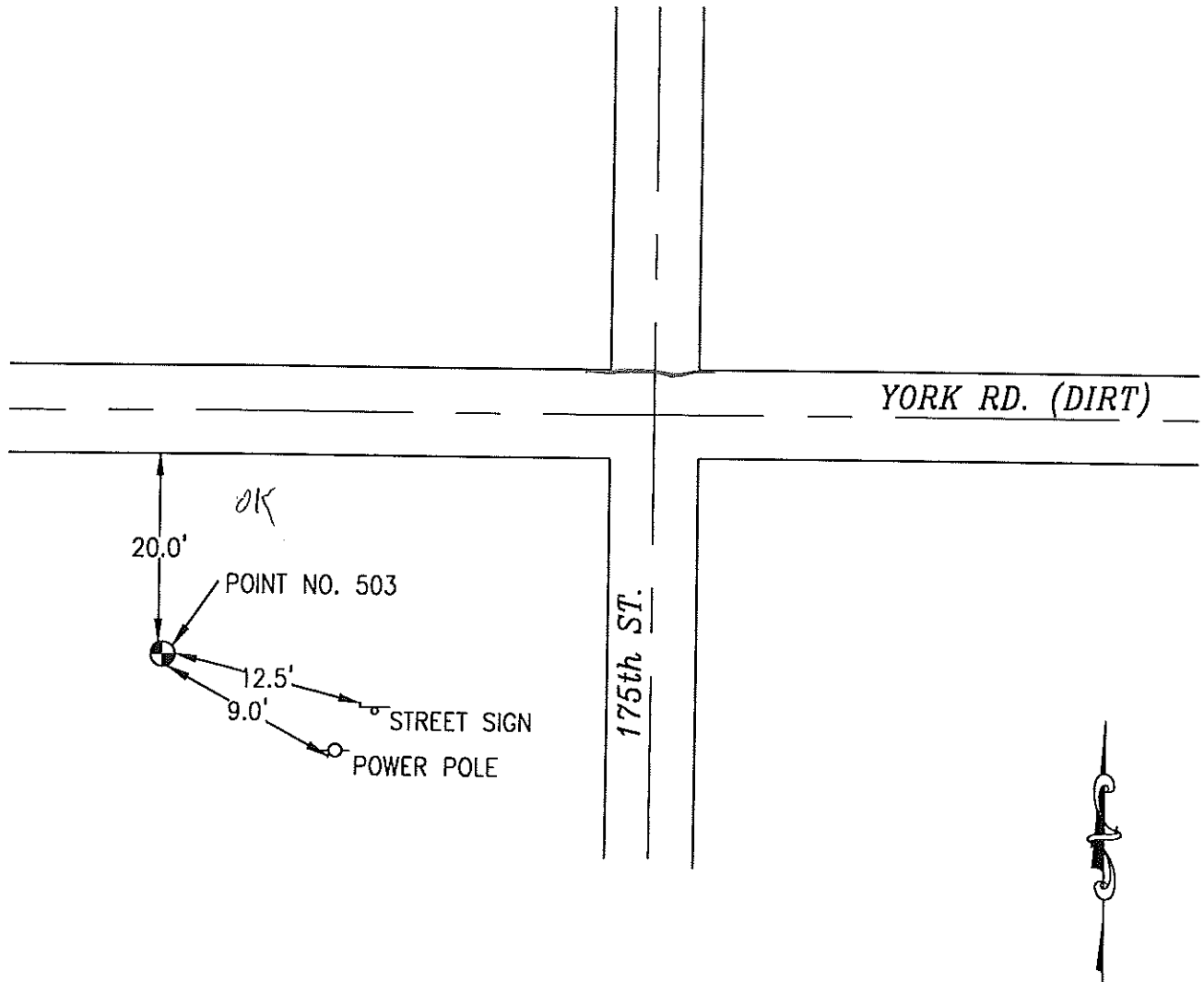
774401-4

OK

SET 5/8 INCH DIAMETER ROD WITH 2.5 INCH DIAMETER CAP, 0.15 FEET BELOW GROUND, STAMPED "POTTAWATTAMIE CO. 1998, 503, 774401-4". LOCATED APPROXIMATELY 20 FEET SOUTH OF THE SOUTH EDGE OF YORK ROAD, 9 FEET WEST OF A POWER POLE, 12.5 FEET WEST OF STREET INTERSECTION SIGN. ON THE BEEBEETOWN CREEK 7.5 MINUTE QUADRANGLE.

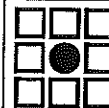


PT#	NAME OR DESIGNATION	GEODETIC NAD83 (1996)		HEIGHT ELLIPSOID METERS	SP NAD83 (1996) IOWA SOUTH HEIGHT		SP NAD83 (1996) IOWA SOUTH HEIGHT			
		LATITUDE (North) DEG MIN SEC	LONGITUDE (West) DEG MIN SEC		NORTHING METERS	EASTING METERS	NORTHING US FEET	EASTING US FEET	NAVD88 METERS	NAVD88 US FEET
503	774401-4	41 30 23.32829	95 51 01.72155	355.80	169945.655	303794.867	384.48	557563.37	996700.33	1261.4



NOT TO SCALE

LOCATION DIAGRAM
 POTTAWATTAMIE COUNTY IOWA
 GIS Mapping Project
 GPS Survey Report



MERRICK

Engineers & Architects

2450 S. Pearl Street Aurora, Colorado 80014 (303)751-0741

Job Number: 50013142

Date: October 23, 1998