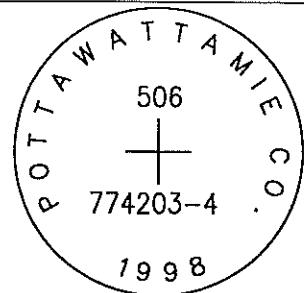


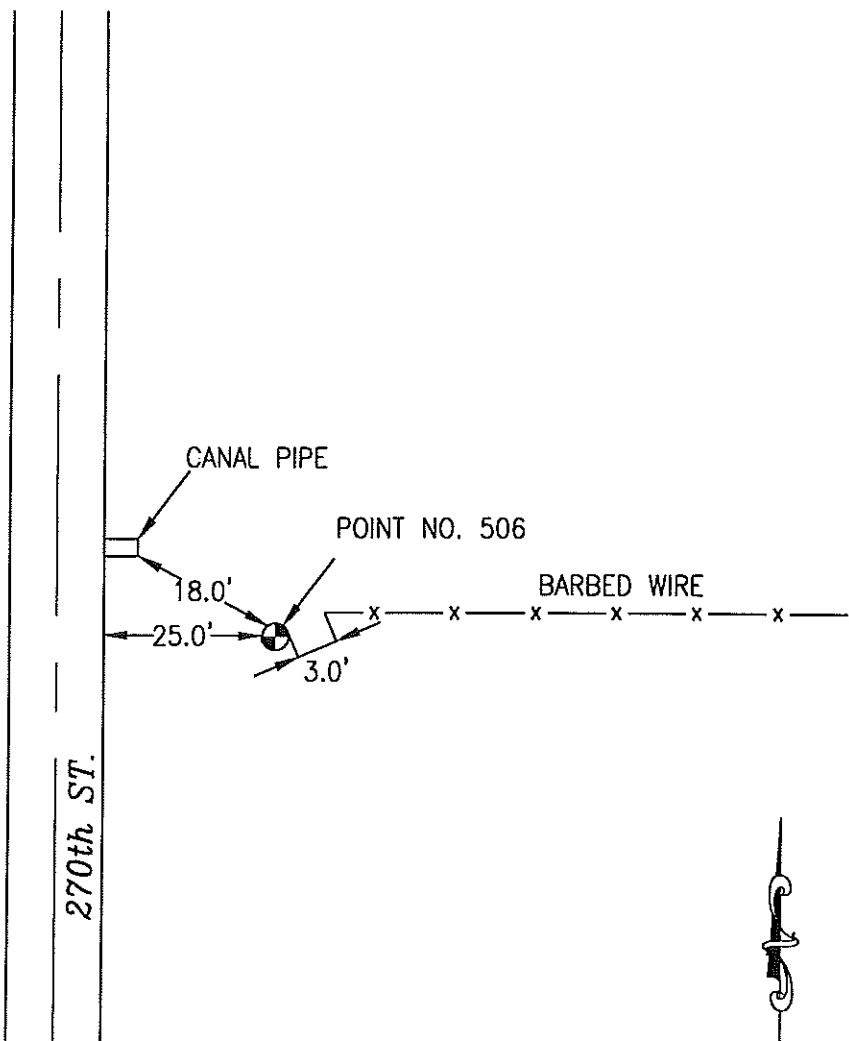
OK

506 774203-4

SET 5/8 INCH DIAMETER ROD WITH 2.5 INCH DIAMETER CAP, 0.25 FEET BELOW GROUND, STAMPED "POTTAWATTAMIE CO. 1998, 506, 774203-4". LOCATED APPROXIMATELY .25 FEET EAST OF THE EAST EDGE OF 270TH STREET, 3 FEET SOUTHWEST OF FENCE, 18 FEET EAST OF EAST END OF CANAL PIPE. ON THE HARD SCRATCH 7.5 MINUTE QUADRANGLE.



PT#	NAME OR DESIGNATION	GEODETC NAD83 (1996)		HEIGHT ELLIPSOID METERS	SP NAD83 (1996) IOWA SOUTH HEIGHT			SP NAD83 (1996) IOWA SOUTH HEIGHT		
		LATITUDE (North) DEG MIN SEC	LONGITUDE (West) DEG MIN SEC		NORTHING METERS	EASTING METERS	NAVD88 METERS	NORTHING US FEET	EASTING US FEET	NAVD88 US FEET
506	774203-4	41 30 22.48365	95 40 11.30700	303.12	169527.731	318872.366	331.82	556192.23	1046167.09	1088.6



NOT TO SCALE

LOCATION DIAGRAM
POTTAWATTAMIE COUNTY IOWA
GIS Mapping Project
GPS Survey Report

MERRICK
Engineers & Architects
2450 S. Pearl Street Aurora, Colorado 80014 (303)751-0741
Job Number: 50013142
Date: October 23, 1998