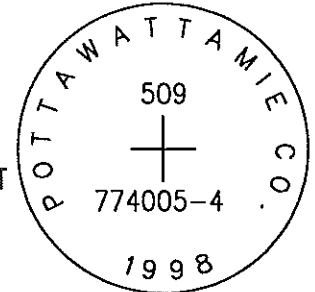


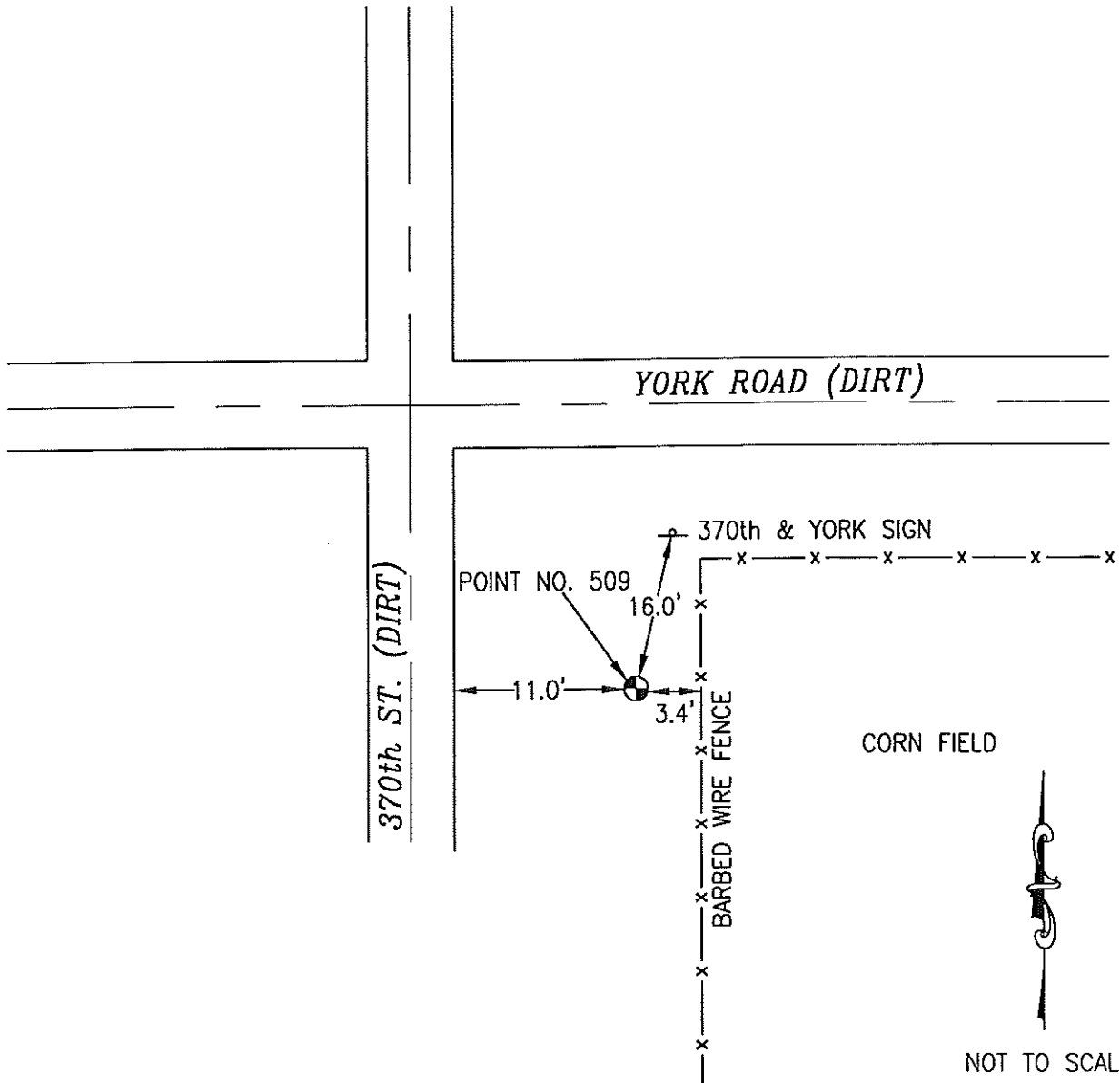
ok

509 774005-4

SET 5/8 INCH DIAMETER ROD WITH 2.5 INCH DIAMETER CAP, 0.4 FEET BELOW GROUND, STAMPED "POTTAWATTAMIE CO. 1998, 509, 774005-4". LOCATED APPROXIMATELY 11 FEET EAST OF THE EAST EDGE 370TH STREET, 3.4 FEET WEST OF A FENCE, 16 FEET SOUTH OF A STREET INTERSECTION SIGN, ON THE SOUTH SIDE OF YORK ROAD. ON THE SHELBY 7.5 MINUTE QUADRANGLE.



PT#	NAME OR DESIGNATION	GEODEIC NAD83 (1996)		HEIGHT ELLIPSOID METERS	SP NAD83 (1996) IOWA SOUTH		HEIGHT NAVD88 METERS	SP NAD83 (1996) IOWA SOUTH		HEIGHT NAVD88 US FEET
		LATITUDE (North) DEG MIN SEC	LONGITUDE (West) DEG MIN SEC		NORTHING METERS	EASTING METERS		NORTHING US FEET	EASTING US FEET	
509	774005-4	41 30 21.22273	95 28 47.28019	382.95	169110.504	334729.741	411.36	554823.38	1098192.49	1349.6



LOCATION DIAGRAM  
 POTTAWATTAMIE COUNTY IOWA  
 GIS Mapping Project  
 GPS Survey Report



**MERRICK**

Engineers & Architects

2450 S. Pearl Street Aurora, Colorado 80014 (303)751-0741

Job Number: 50013142

Date: October 23, 1998