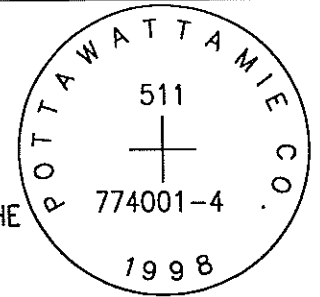


OK

511 774001-4

SET 5/8 INCH DIAMETER ROD WITH 2.5 INCH DIAMETER CAP, 0.25 FEET BELOW GROUND, STAMPED "POTTAWATTAMIE CO. 1998, 511, 774001-4". LOCATED APPROXIMATELY 10 FEET EAST OF THE EAST EDGE OF 410TH STREET, 3.1 FEET WEST OF A BARBED WIRE FENCE, 4.5 FEET SOUTHWEST OF A POWERPOLE, ON THE SOUTH SIDE OF YORK ROAD. ON THE SHELBY 7.5 MINUTE QUADRANGLE.

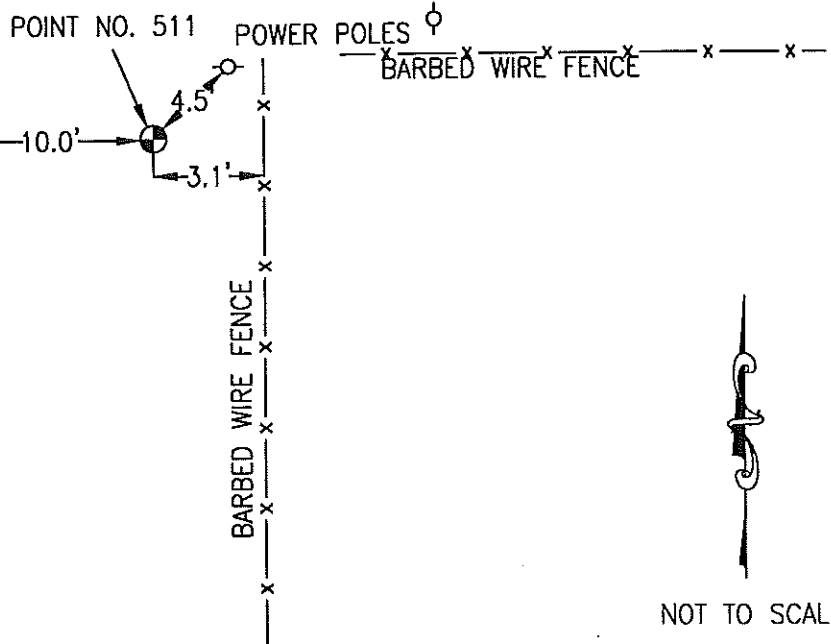


PT#	NAME OR DESIGNATION	GEODEIC NAD83 (1996)		HEIGHT ELLIPSOID METERS	SP NAD83 (1996) IOWA SOUTH HEIGHT			SP NAD83 (1996) IOWA SOUTH HEIGHT		
		LATITUDE (North) DEG MIN SEC	LONGITUDE (West) DEG MIN SEC		NORTHING METERS	EASTING METERS	NAVD88 METERS	NORTHING US FEET	EASTING US FEET	NAVD88 US FEET
511	774001-4	41 30 20.70386	95 24 09.82758	383.77	168950.914	341162.027	412.03	554299.79	1119295.75	1351.8

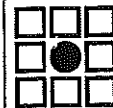
STREET SIGN  
410th & YORK ST.

410th ST. (DIRT)

YORK ST. (DIRT)



LOCATION DIAGRAM  
POTTAWATTAMIE COUNTY IOWA  
GIS Mapping Project  
GPS Survey Report



**MERRICK**

Engineers & Architects

2450 S. Peoria Street Aurora, Colorado 80014 (303)751-0741

Job Number: 50013142

Date: October 23, 1998