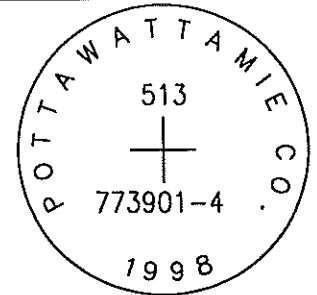


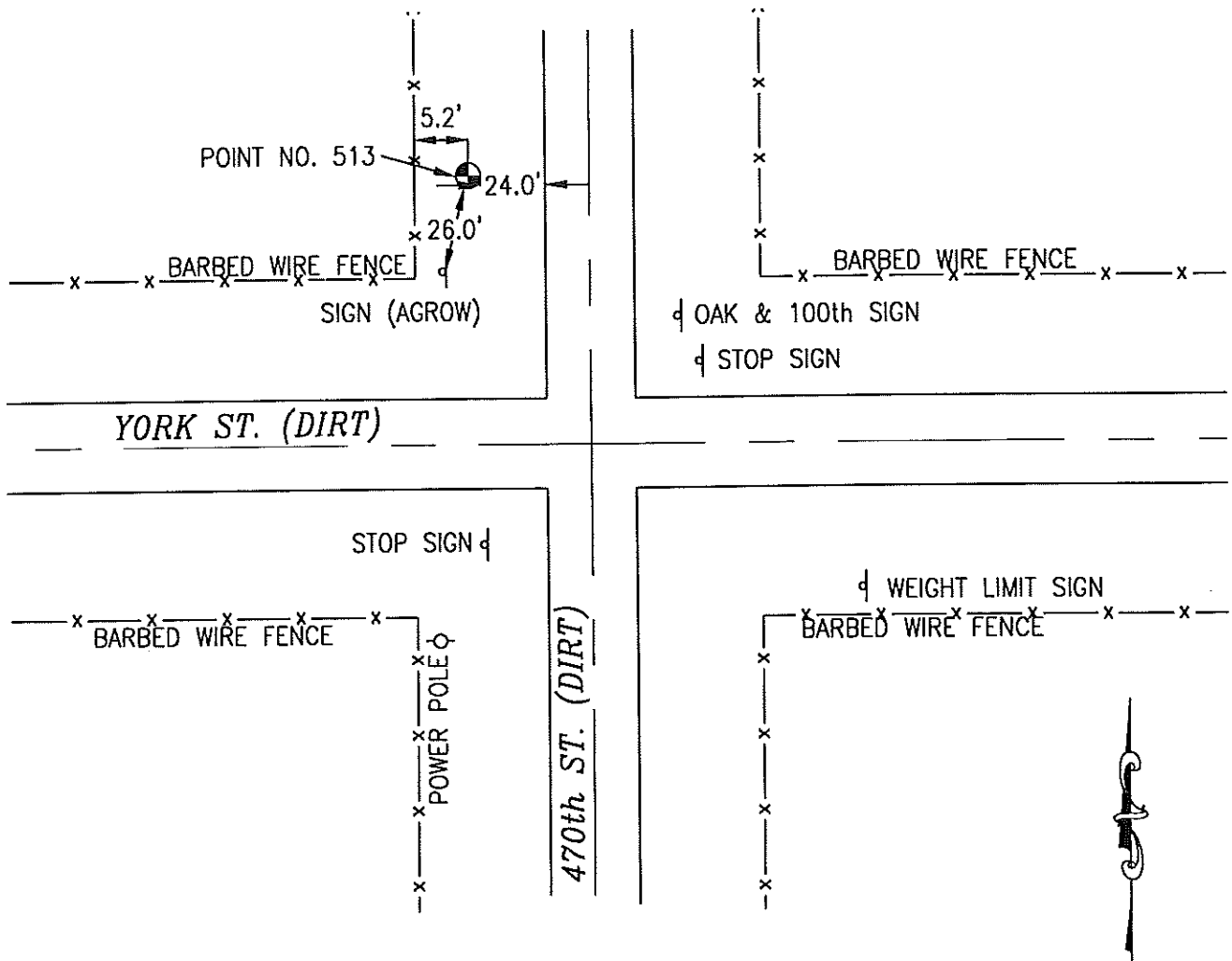
ok

513 773901-4

SET 5/8 INCH DIAMETER ROD WITH 2.5 INCH DIAMETER CAP, 0.2 FEET BELOW GROUND, STAMPED "POTTAWATTAMIE CO. 1998, 513, 773901-4". LOCATED APPROXIMATELY 24 FEET WEST OF THE WEST EDGE OF 470TH STREET, 5.2 FEET EAST OF A FENCE, 26 FEET NORTH OF SIGN (AGROW). ON THE CORLEY 7.5 MINUTE QUADRANGLE.

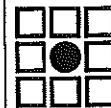


PT#	NAME OR DESIGNATION	GEODEIC NAD83 (1996)		HEIGHT ELLIPSOID METERS	SP NAD83 (1996) IOWA SOUTH HEIGHT			SP NAD83 (1996) IOWA SOUTH HEIGHT		
		LATITUDE (North) DEG MIN SEC	LONGITUDE (West) DEG MIN SEC		NORTHING METERS	EASTING METERS	NAV88 METERS	NORTHING US FEET	EASTING US FEET	NAV88 US FEET
513	773901-4	41 30 21.14341	95 17 19.70610	352.48	168762.666	350671.069	380.49	553682.18	1150493.33	1248.3



NOT TO SCALE

LOCATION DIAGRAM
 POTTAWATTAMIE COUNTY IOWA
 GIS Mapping Project
 GPS Survey Report



MERRICK

Engineers & Architects

2450 S. Pearl Street Aurora, Colorado 80014 (303)751-0741

Job Number: 50013142

Date: October 23, 1998