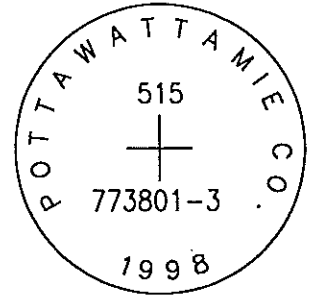


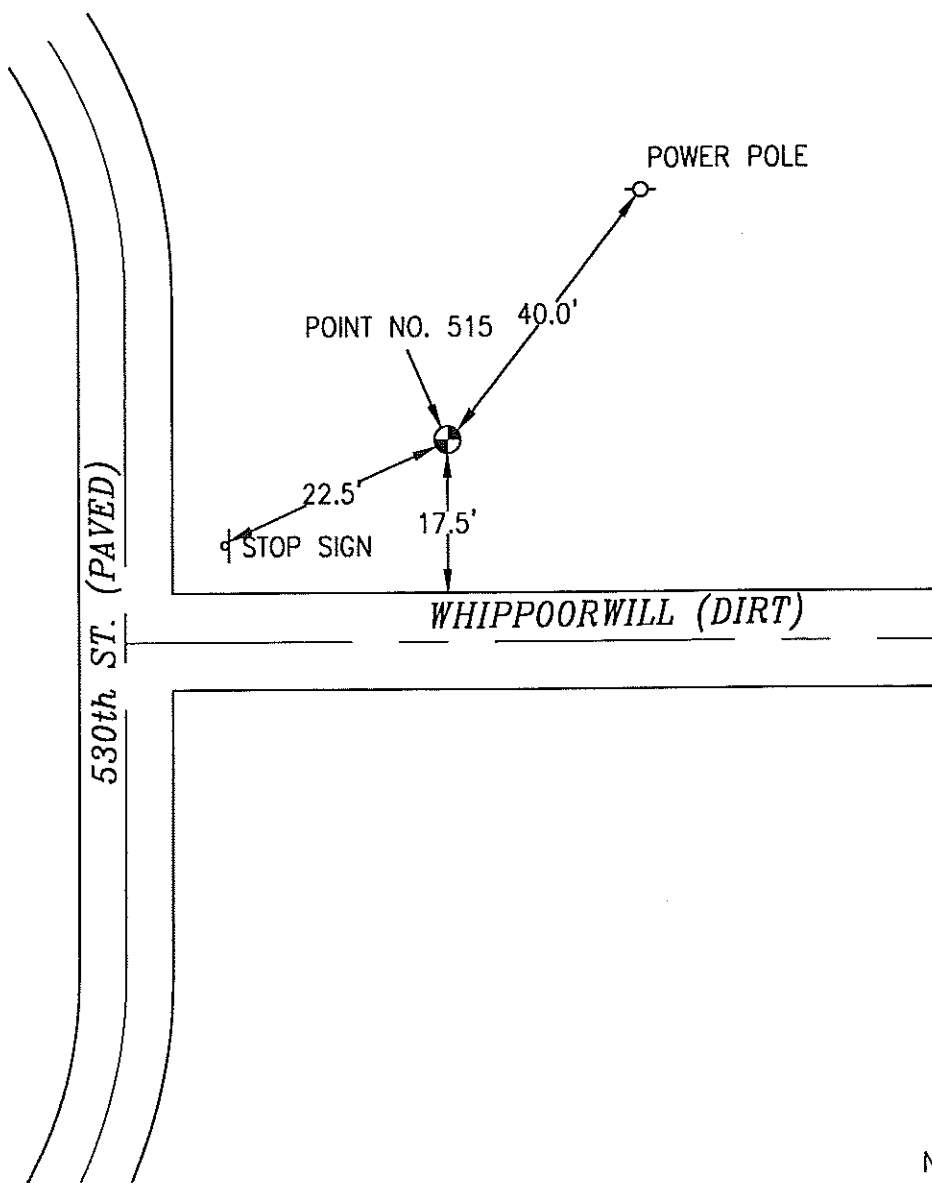
OK

515 773801-3

SET 5/8 INCH DIAMETER ROD WITH 2.5 INCH DIAMETER CAP, 0.15 FEET BELOW GROUND, STAMPED "POTTAWATTAMIE CO. 1998, 515, 773801-3". LOCATED APPROXIMATELY 17.5 FEET NORTH OF THE NORTH EDGE OF WHIPPOORWILL ROAD, 22.5 FEET EAST OF A STOP SIGN, 40 FEET SOUTHWEST OF A POWERPOLE, ON THE EAST SIDE OF 530TH STREET. ON THE WALNUT 7.5 MINUTE QUADRANGLE.



PT#	NAME OR DESIGNATION	GEODETTIC NAD83 (1996)		HEIGHT ELLIPSOID METERS	SP NAD83 (1996) IOWA SOUTH HEIGHT			SP NAD83 (1996) IOWA SOUTH HEIGHT		
		LATITUDE (North) DEG MIN SEC	LONGITUDE (West) DEG MIN SEC		NORTHING METERS	EASTING METERS	NAV88 METERS	NORTHING US FEET	EASTING US FEET	NAV88 US FEET
515	773801-3	41 29 27.94767	95 10 27.06876	372.96	166931.418	360206.819	400.69	547674.16	1181778.54	1314.6



NOT TO SCALE

LOCATION DIAGRAM
 POTTAWATTAMIE COUNTY IOWA
 GIS Mapping Project
 GPS Survey Report

MERRICK
 Engineers & Architects
 2450 S. Pearl Street Aurora, Colorado 80014 (303)751-0741
 Job Number: 50013142
 Date: October 23, 1998