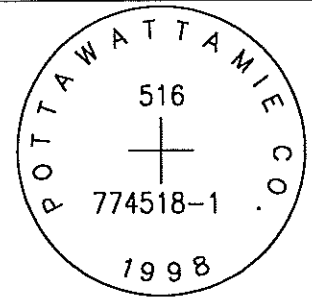


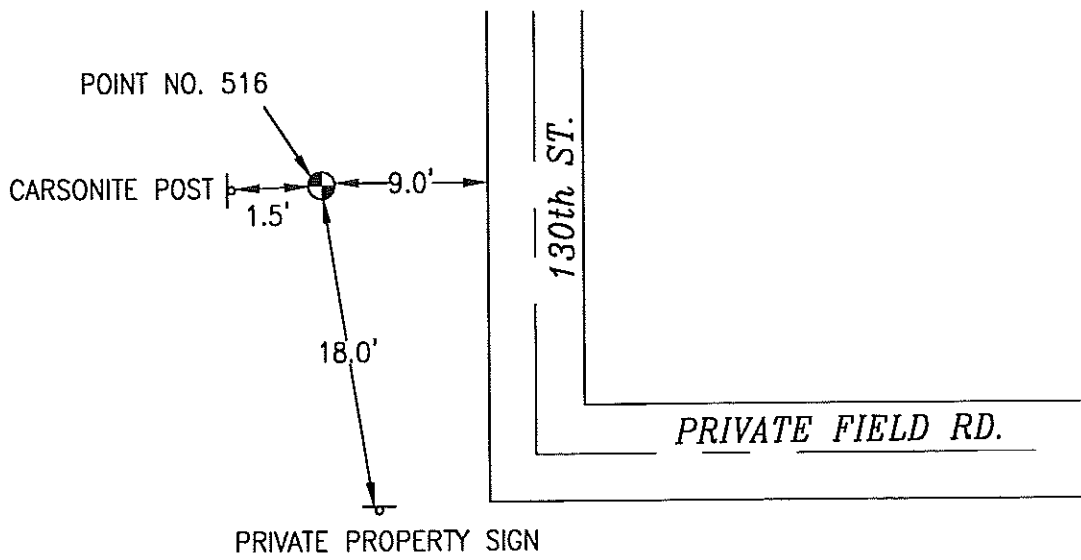
OK

516 774518-1

SET 5/8 INCH DIAMETER ROD WITH 2.5 INCH DIAMETER CAP, 0.25 FEET BELOW GROUND, STAMPED "POTTAWATTAMIE CO. 1998, 516, 774518-1". LOCATED APPROXIMATELY 9 FEET WEST OF THE WEST EDGE OF 130TH STREET, 18 FEET NORTH OF A PRIVATE PROPERTY SIGN, 1.5 FEET EAST OF A CARSONITE POST. ON THE LOVELAND 7.5 MINUTE QUADRANGLE.

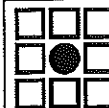


PT#	NAME OR DESIGNATION	GEODEIC NAD83 (1996)		HEIGHT ELLIPSOID METERS	SP NAD83 (1996) IOWA SOUTH HEIGHT			SP NAD83 (1996) IOWA SOUTH HEIGHT		
		LATITUDE (North) DEG MIN SEC	LONGITUDE (West) DEG MIN SEC		NORTHING METERS	EASTING METERS	NAV88 METERS	NORTHING US FEET	EASTING US FEET	NAV88 US FEET
516	774518-1	41 28 12.59695	95 56 15.87755	274.19	166114.708	296399.273	302.71	544994.67	972436.61	993.1



NOT TO SCALE

LOCATION DIAGRAM
POTTAWATTAMIE COUNTY IOWA
GIS Mapping Project
GPS Survey Report



MERRICK

Engineers & Architects

2450 S. Peoria Street Aurora, Colorado 80014 (303)751-0741

Job Number: 50013142

Date: October 26, 1998