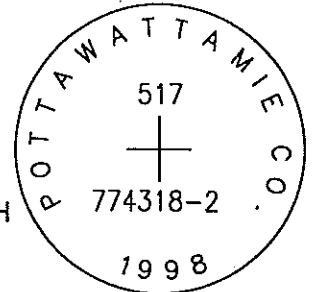


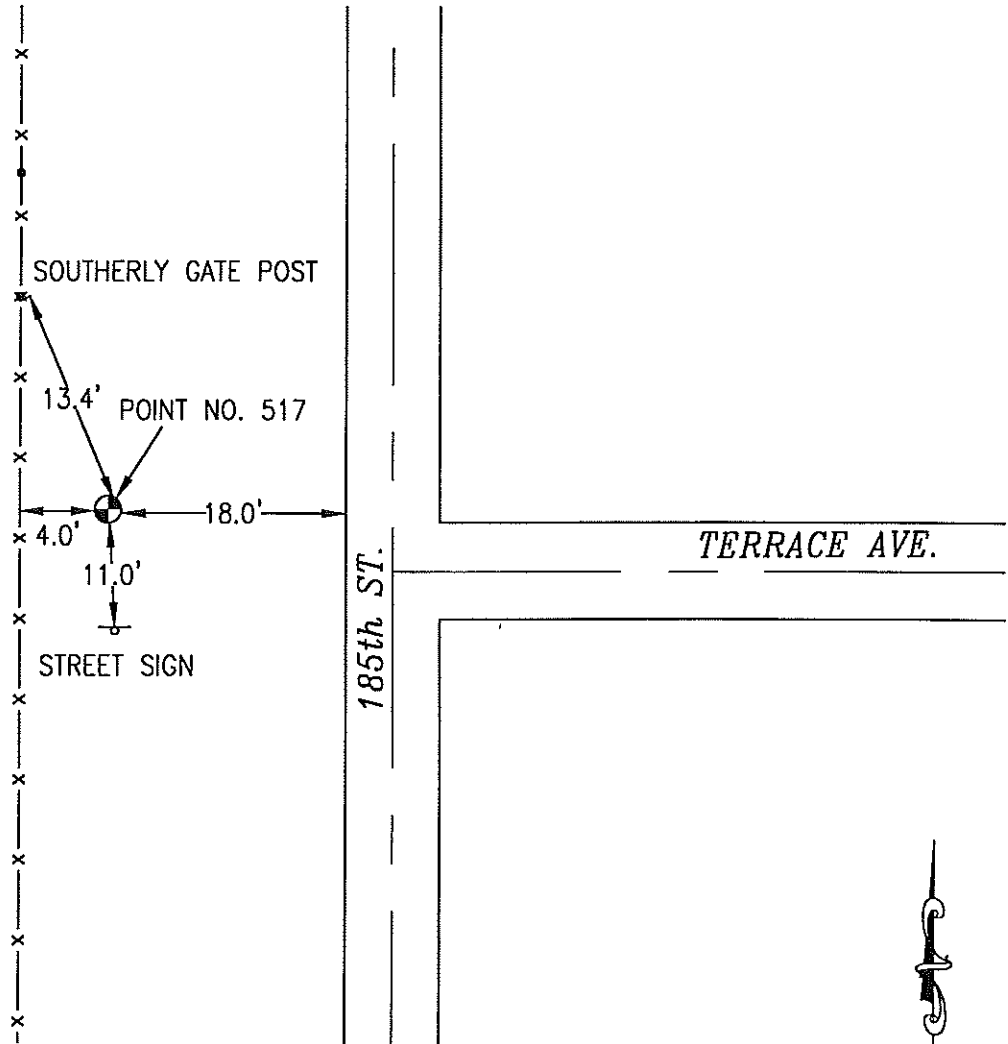
OK

517 774318-2

SET 5/8 INCH DIAMETER ROD WITH 2.5 INCH DIAMETER CAP, 0.2 FEET BELOW GROUND, STAMPED "POTTAWATTAMIE CO. 1998, 517, 774318-2". LOCATED APPROXIMATELY 18 FEET WEST OF THE WEST EDGE 185TH STREET, 13.4 FEET SOUTHEAST OF THE SOUTH GATEPOST, 4 FEET EAST OF A FENCE, 11 FEET NORTH OF A STREET SIGN. ON THE HONEY CREEK 7.5 MINUTE QUADRANGLE.



PT#	NAME OR DESIGNATION	GEODETTIC NAD83 (1996)		HEIGHT ELLIPSOID METERS	SP NAD83 (1996) IOWA SOUTH HEIGHT			SP NAD83 (1996) IOWA SOUTH HEIGHT		
		LATITUDE (North) DEG MIN SEC	LONGITUDE (West) DEG MIN SEC		NORTHING METERS	EASTING METERS	NAV088 METERS	NORTHING US FEET	EASTING US FEET	NAV088 US FEET
517	774318-2	41 27 53.78101	95 49 41.77116	355.98	165283.960	305524.788	384.54	542269.13	1002375.91	1261.6



NOT TO SCALE

LOCATION DIAGRAM
POTTAWATTAMIE COUNTY IOWA
GIS Mapping Project
GPS Survey Report

MERRICK
Engineers & Architects
2450 S. Peoria Street Aurora, Colorado 80014 (303)751-0741
Job Number: 50013142
Date: October 26, 1998