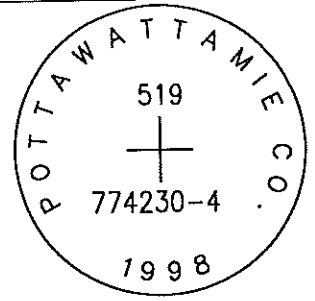


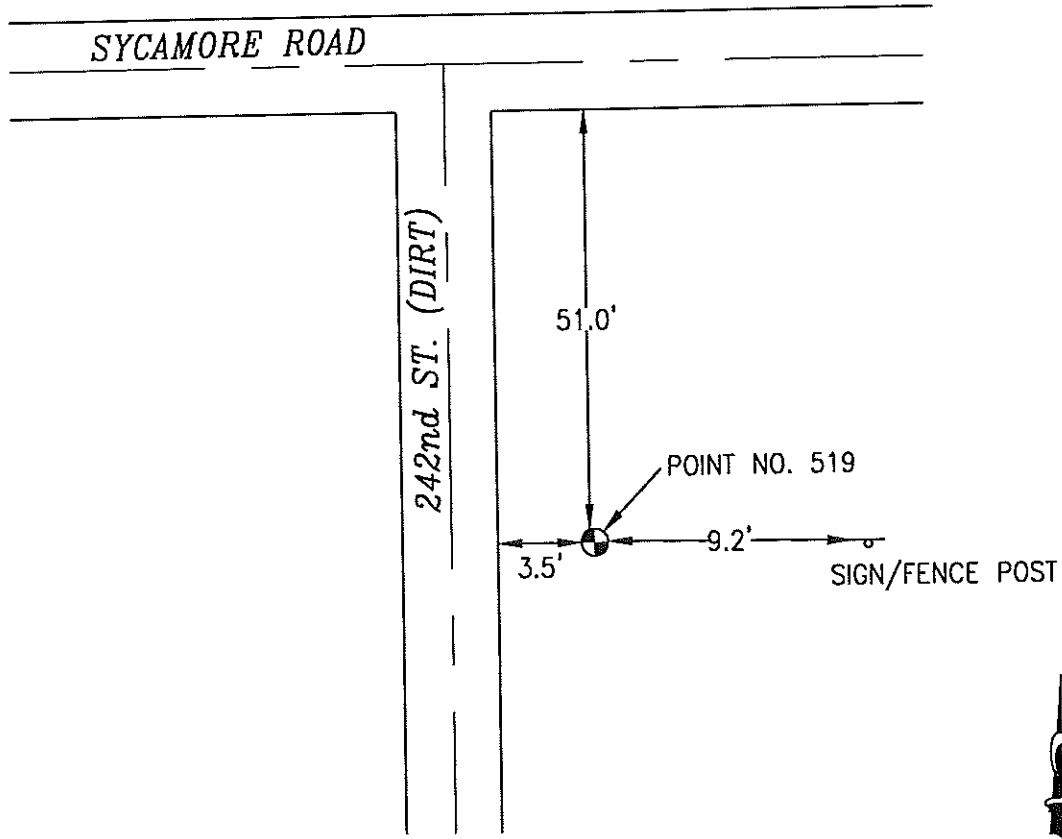
OK

519 774230-4

SET 5/8 INCH DIAMETER ROD WITH 2.5 INCH DIAMETER CAP, 0.3 FEET BELOW GROUND, STAMPED "POTTAWATTAMIE CO. 1998, 519, 774230-4". LOCATED APPROXIMATELY 51 FEET SOUTH OF THE SOUTH EDGE OF SYCAMORE ROAD, 3.5 FEET EAST OF THE EAST EDGE OF 242ND STREET, 9.2 FEET WEST OF A SIGNPOST. ON THE UNDERWOOD 7.5 MINUTE QUADRANGLE.



PT#	NAME OR DESIGNATION	GEODETTIC NAD83 (1996)		HEIGHT ELLIPSOID METERS	SP NAD83 (1996) IOWA SOUTH HEIGHT			SP NAD83 (1996) IOWA SOUTH HEIGHT		
		LATITUDE (North) DEG MIN SEC	LONGITUDE (West) DEG MIN SEC		NORTHING METERS	EASTING METERS	NAV88 METERS	NORTHING US FEET	EASTING US FEET	NAV88 US FEET
519	774230-4	41 26 53.56869	95 43 20.48260	292.89	163195.632	314322.082	321.31	535417.67	1031238.36	1054.1



NOT TO SCALE

LOCATION DIAGRAM  
POTTAWATTAMIE COUNTY IOWA  
GIS Mapping Project  
GPS Survey Report

**MERRICK**  
Engineers & Architects  
2450 S. Pearl Street Aurora, Colorado 80014 (303)751-0741  
Job Number: 50013142  
Date: October 26, 1998