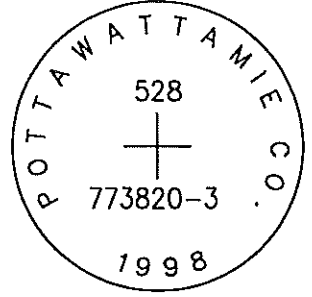


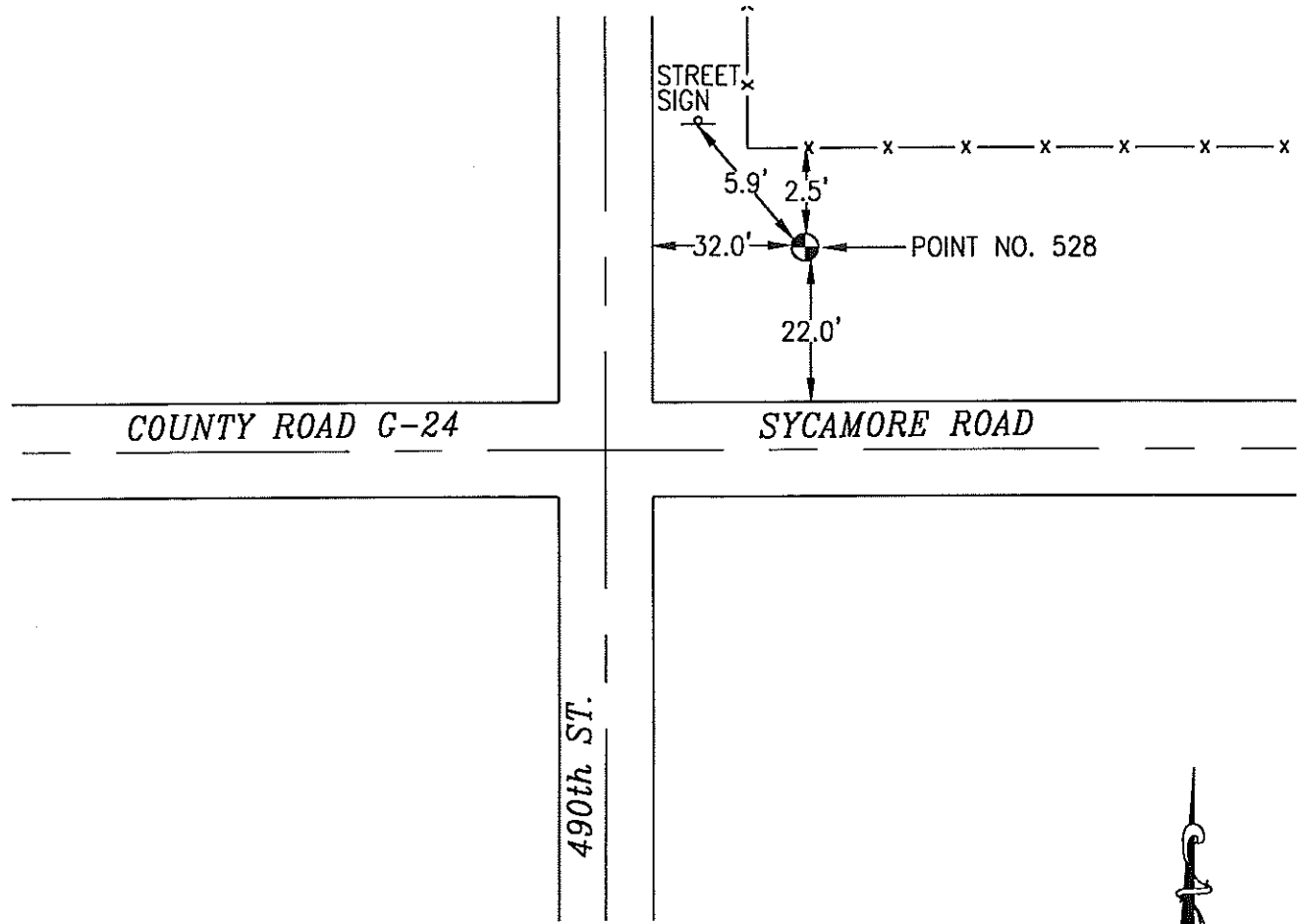
OK

528 773820-3



SET 5/8 INCH DIAMETER ROD WITH 2.5 INCH DIAMETER CAP, 0.3 FEET BELOW GROUND, STAMPED "POTTAWATTAMIE CO. 1998, 528, 773820-3". LOCATED APPROXIMATELY 22 FEET NORTH OF THE NORTH EDGE SYCAMORE ROAD, 32 FEET EAST OF THE EAST EDGE OF 490TH STREET, 5.9 FEET SOUTHEAST OF A STREET INTERSECTION SIGN, 2.5 FEET SOUTH OF A CARSONITE POST AND FENCELINE. ON THE WALNUT 7.5 MINUTE QUADRANGLE.

PT#	NAME OR DESIGNATION	GEODETC NAD83 (1996)			HEIGHT ELLIPSOID METERS	SP NAD83 (1996) IOWA SOUTH HEIGHT			SP NAD83 (1996) IOWA SOUTH HEIGHT		
		LATITUDE (North) DEG MIN SEC	LONGITUDE (West) DEG MIN SEC			NORTHING METERS	EASTING METERS	NAVD88 METERS	NORTHING US FEET	EASTING US FEET	NAVD88 US FEET
528	773820-3	41 26 50.99584	95 15 03.78687	382.51	162216.871	353691.940	410.24	532206.52	1160404.31	1345.9	



NOT TO SCALE

LOCATION DIAGRAM
 POTTAWATTAMIE COUNTY IOWA
 GIS Mapping Project
 GPS Survey Report

MERRICK
 Engineers & Architects
 2450 S. Pearl Street Aurora, Colorado 80014 (303)751-0741
 Job Number: 50013142
 Date: October 26, 1998