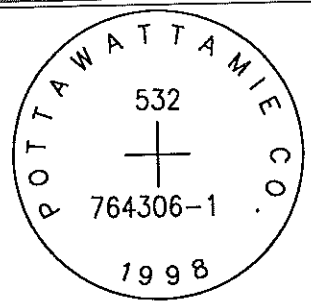


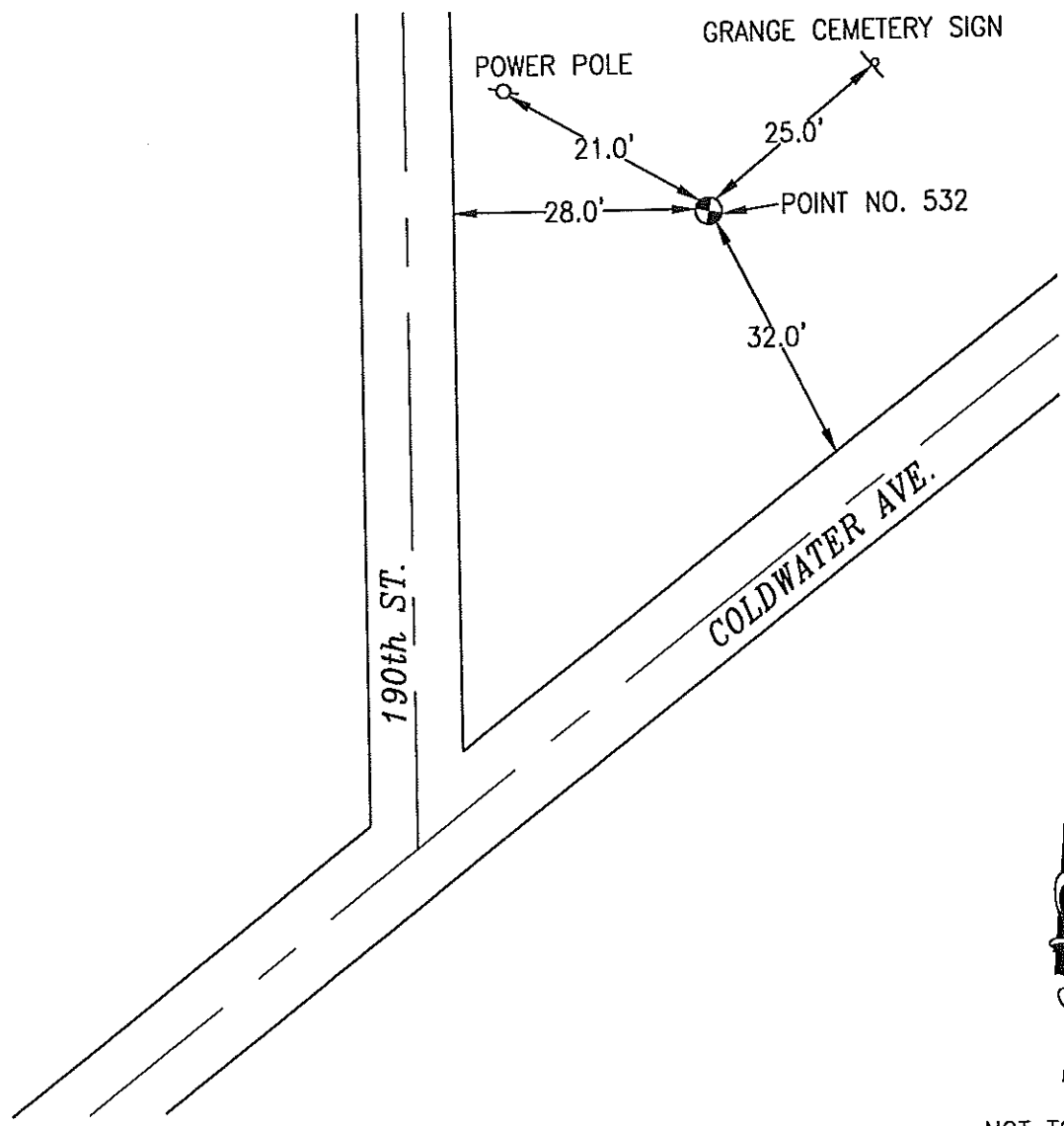
OK Replace post

532 764306-1



SET 5/8 INCH DIAMETER ROD WITH 2.5 INCH DIAMETER CAP, 0.2 BELOW GROUND, STAMPED "POTTAWATTAMIE CO. 1998, 532, 764306-1". LOCATED APPROXIMATELY 28 FEET EAST OF THE EAST EDGE OF 190TH STREET, 32 FEET NORTH OF THE NORTH EDGE OF COLDWATER AVE, 21 FEET SOUTH OF A POWER POLE, 25 FEET WEST OF A GRANGE CEMETERY SIGN, ON THE HONEY CREEK 7.5 MINUTE QUADRANGLE.

| PT# | NAME OR DESIGNATION | GEODEIC NAD83 (1996) | | HEIGHT ELLIPSOID METERS | SP NAD83 (1996) IOWA SOUTH | | HEIGHT NAVD88 METERS | SP NAD83 (1996) IOWA SOUTH | | HEIGHT NAVD88 US FEET |
|-----|---------------------|------------------------------|------------------------------|-------------------------|----------------------------|----------------|----------------------|----------------------------|-----------------|-----------------------|
| | | LATITUDE (North) DEG MIN SEC | LONGITUDE (West) DEG MIN SEC | | NORTHING METERS | EASTING METERS | | NORTHING US FEET | EASTING US FEET | |
| 532 | 764306-1 | 41 24 47.20053 | 95 49 31.46784 | 279.37 | 159523.737 | 305609.937 | 307.66 | 523370.79 | 1002655.27 | 1009.4 |



NOT TO SCALE

LOCATION DIAGRAM
 POTTAWATTAMIE COUNTY IOWA
 GIS Mapping Project
 GPS Survey Report

MERRICK
 Engineers & Architects
 2450 S. Peoria Street Aurora, Colorado 80014 (303)751-0741
 Job Number: 50013142
 Date: October 26, 1998