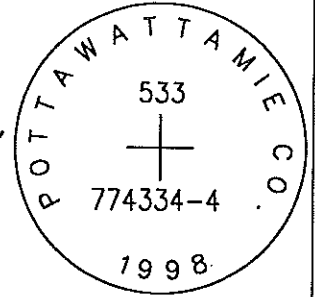


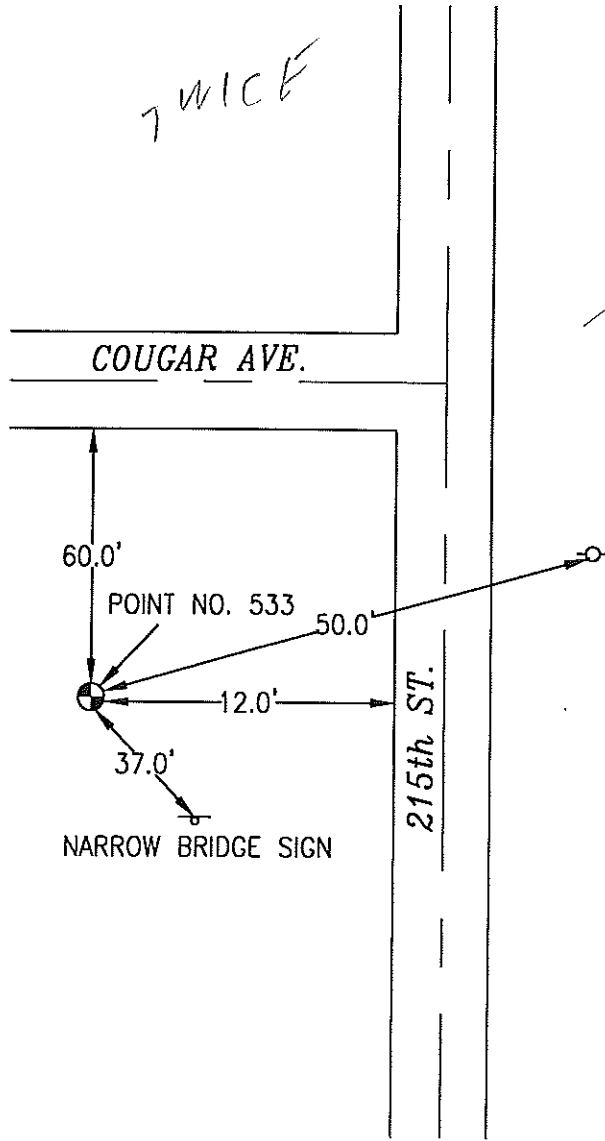
OK

533 774334-4



SET 5/8 INCH DIAMETER ROD WITH 2.5 INCH DIAMETER CAP, 0.2 BELOW GROUND, STAMPED "POTTAWATTAMIE CO. 1998, 533, 774334-4". LOCATED APPROXIMATELY 12 FEET WEST OF THE WEST EDGE OF 215TH STREET, 60 FEET SOUTH OF THE SOUTH EDGE OF COUGAR AVE., 37 FEET NORTH OF NARROW BRIDGE SIGN, 50 FEET WEST-SOUTHWEST OF A POWERPOLE. ON THE HONEY CREEK 7.5 MINUTE QUADRANGLE.

PT#	NAME OR DESIGNATION	GEODETC NAD83 (1996)		HEIGHT ELLIPSOID METERS	SP NAD83 (1996) IOWA SOUTH HEIGHT			SP NAD83 (1996) IOWA SOUTH HEIGHT		
		LATITUDE (North) DEG MIN SEC	LONGITUDE (West) DEG MIN SEC		NORTHING METERS	EASTING METERS	NAVD88 METERS	NORTHING US FEET	EASTING US FEET	NAVD88 US FEET
533	774334-4	41 25 35.89754	95 46 29.61396	293.74	160913.821	309870.988	322.08	527931.43	1016635.07	1056.7



7 WICE

SEE PT 1533



NOT TO SCALE

LOCATION DIAGRAM
 POTTAWATTAMIE COUNTY IOWA
 GIS Mapping Project
 GPS Survey Report

MERRICK
 Engineers & Architects
 2450 S. Pearl Street Aurora, Colorado 80014 (303)751-0741
 Job Number: 50013142
 Date: October 26, 1998