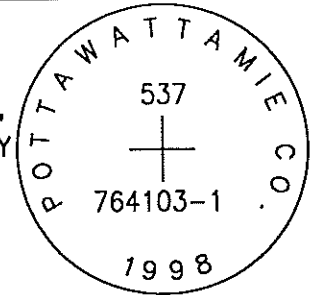


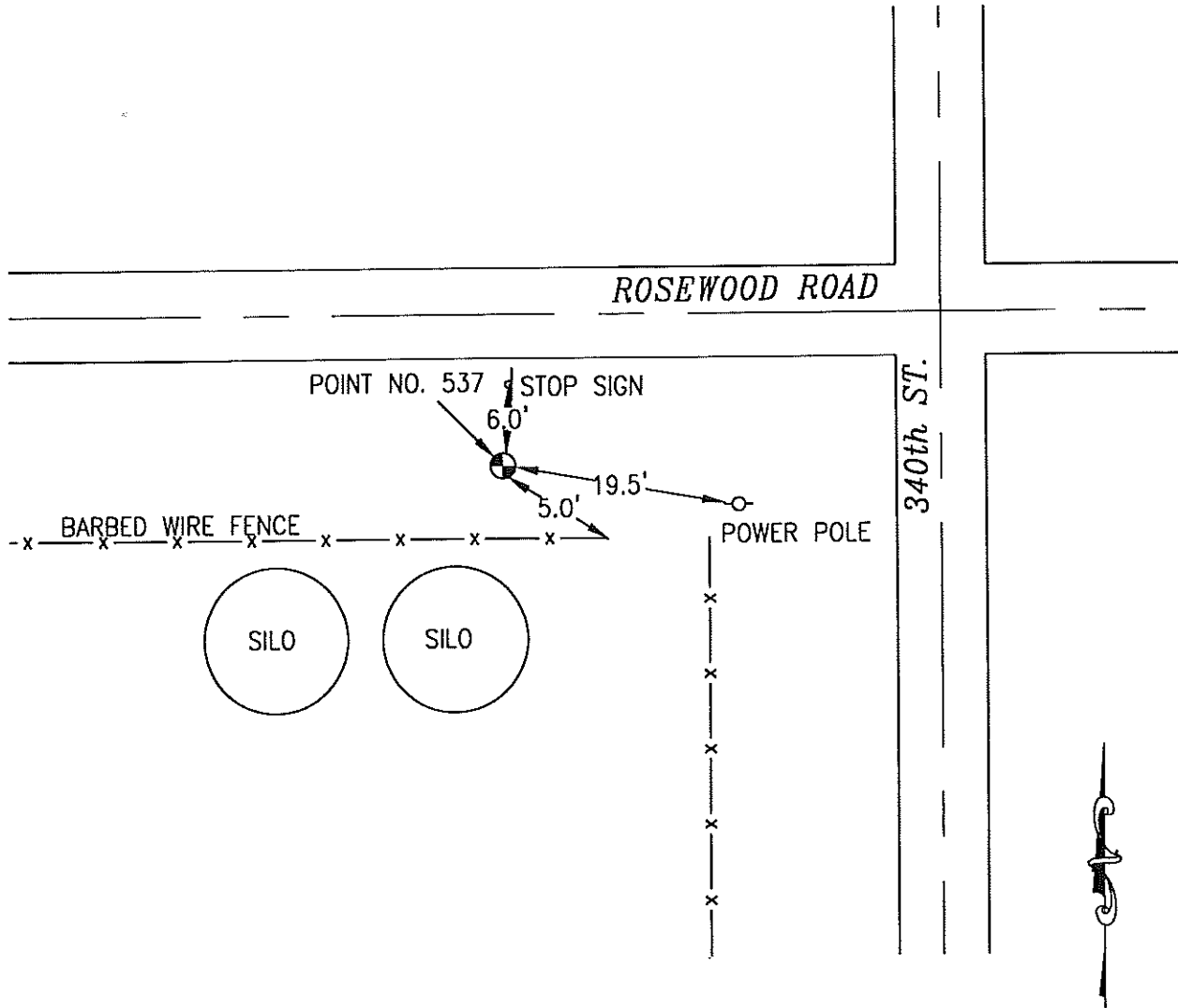
OK

537 764103-1

SET 5/8 INCH DIAMETER ROD WITH 2.5 INCH DIAMETER CAP, 0.3 BELOW GROUND, STAMPED "POTTAWATTAMIE CO. 1998, 537, 764103-1". LOCATED APPROXIMATELY AT THE SOUTHWEST CORNER OF 340TH STREET AND ROSEWOOD ROAD, 6 FEET SOUTH OF A STOP SIGN, 5 FEET NORTHWEST OF A FENCE CORNER, 19.5 FEET WEST OF A POWERPOLE. ON THE NEOLA 7.5 MINUTE QUADRANGLE.

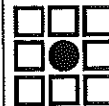


PT#	NAME OR DESIGNATION	GEODETIC NAD83 (1996)		HEIGHT ELLIPSOID METERS	SP NAD83 (1996) IOWA SOUTH HEIGHT					
		LATITUDE (North) DEG MIN SEC	LONGITUDE (West) DEG MIN SEC		NORTHING METERS	EASTING METERS	NAV88 METERS			
537	764103-1	41 25 09.00845	95 32 11.19966	378.66	159590.646	329776.550	406.71	523590.31	1081941.90	1334.4



NOT TO SCALE

LOCATION DIAGRAM
POTTAWATTAMIE COUNTY IOWA
GIS Mapping Project
GPS Survey Report



MERRICK

Engineers & Architects

2450 S. Pearl Street Aurora, Colorado 80014 (303)751-0741

Job Number: 50013142
Date: October 27, 1998