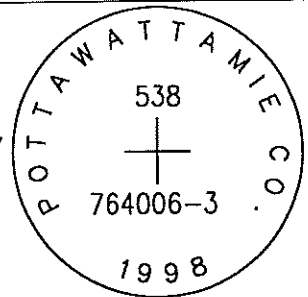


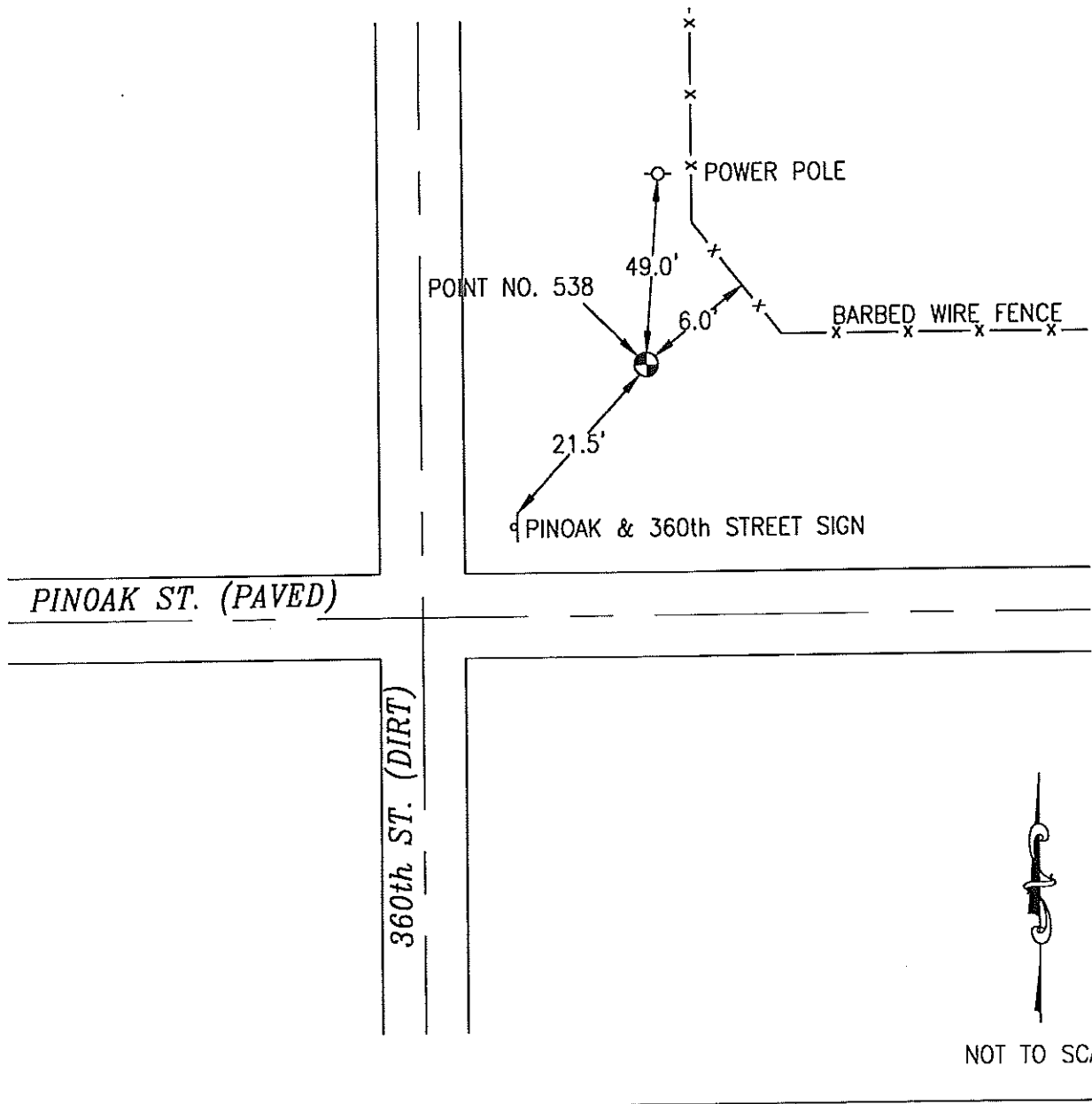
OK

538 764006-3

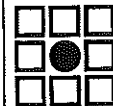
SET 5/8 INCH DIAMETER ROD WITH 2.5 INCH DIAMETER CAP, 0.3 BELOW GROUND, STAMPED "POTTAWATTAMIE CO. 1998, 538, 764006-3". LOCATED APPROXIMATELY AT THE NORTHEAST CORNER OF 360TH STREET AND PINOAK ROAD, 21.5 FEET NORTHEAST OF A STREET INTERSECTION SIGN, 49 FEET SOUTH OF A POWERPOLE, 6 FEET SOUTHWEST OF A FENCE. ON THE AVOCA NW 7.5 MINUTE QUADRANGLE.



PT#	NAME OR DESIGNATION	GEODETIC NAD83 (1996)			HEIGHT ELLIPSOID METERS	SP NAD83 (1996) IOWA SOUTH HEIGHT			SP NAD83 (1996) IOWA SOUTH HEIGHT		
		LATITUDE (North) DEG MIN SEC	LONGITUDE (West) DEG MIN SEC			NORTHING METERS	EASTING METERS	NAV88 METERS	NORTHING US FEET	EASTING US FEET	NAV88 US FEET
538	764006-3	41 24 17.38228	95 29 51.47364		357.11	157923.211	332983.706	385.05	518119.73	1092464.04	1263.3



LOCATION DIAGRAM
 POTTAWATTAMIE COUNTY IOWA
 GIS Mapping Project
 GPS Survey Report



MERRICK
 Engineers & Architects

2450 S. Peoria Street Aurora, Colorado 80014 (303)751-0741
 Job Number: 50013142
 Date: October 27, 1998