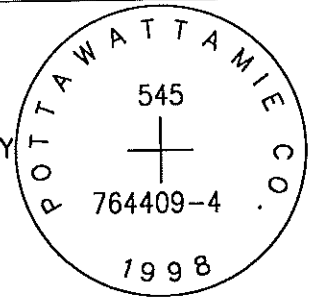


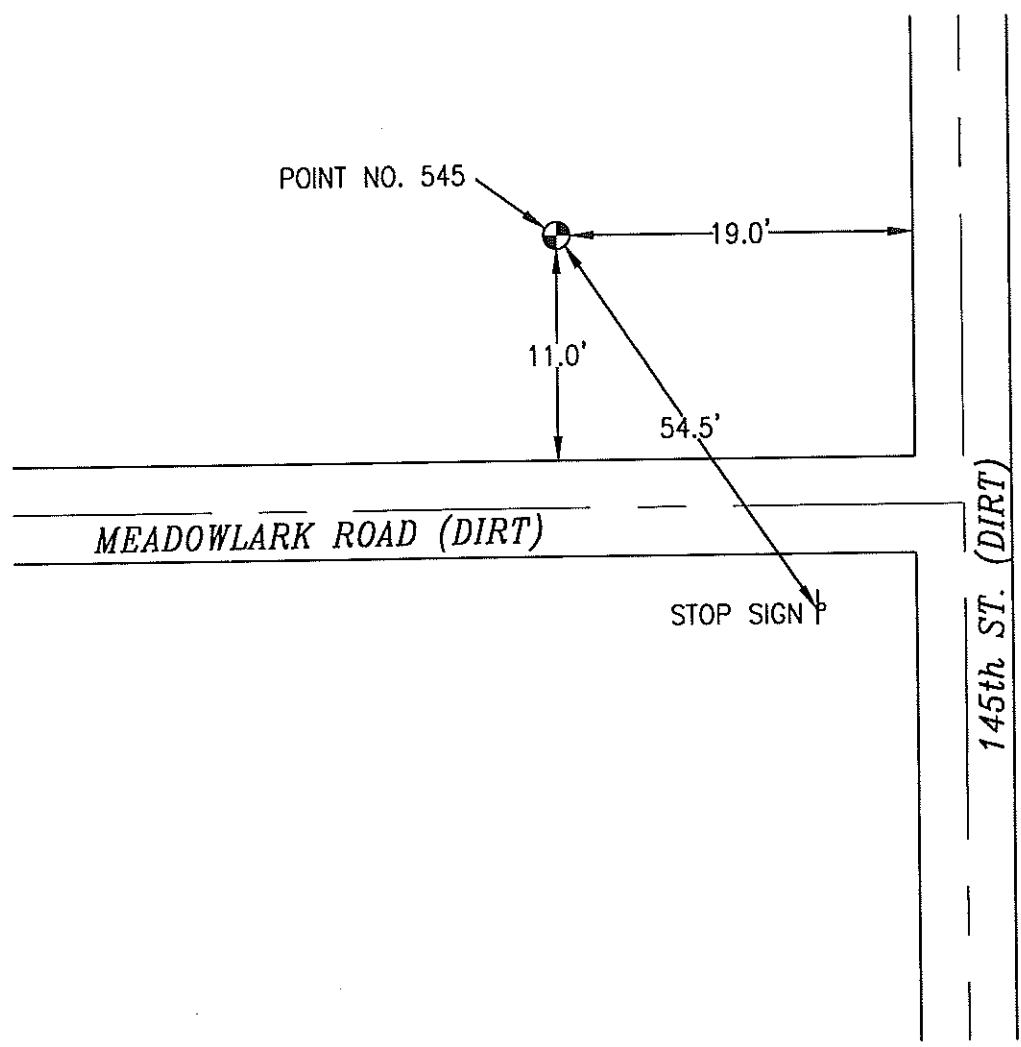
OK

545 764409-4

SET 5/8 INCH DIAMETER ROD WITH 2.5 INCH DIAMETER CAP, 0.2 BELOW GROUND, STAMPED "POTTAWATTAMIE CO. 1998, 545, 764409-4". LOCATED APPROXIMATELY 11 FEET NORTH OF THE NORTH LINE OF MEADOWLARK ROAD, 19 FEET WEST OF THE WEST LINE OF 145TH STREET, 54.5 FEET NORTHWEST OF A STOP SIGN. ON THE LOVELAND 7.5 MINUTE QUADRANGLE.



PT#	NAME OR DESIGNATION	GEODETTIC NAD83 (1996)		HEIGHT ELLIPSOID METERS	SP NAD83 (1996) IOWA SOUTH HEIGHT		SP NAD83 (1996) IOWA SOUTH HEIGHT			
		LATITUDE (North) DEG MIN SEC	LONGITUDE (West) DEG MIN SEC		NORTHING METERS	EASTING METERS	NAV88 METERS	NORTHING US FEET	EASTING US FEET	NAV88 US FEET
545	764409-4	41 23 53.65332	95 54 26.70597	272.56	158058.995	298710.347	300.79	518565.22	980018.86	986.8



NOT TO SCALE

LOCATION DIAGRAM
POTTAWATTAMIE COUNTY IOWA
GIS Mapping Project
GPS Survey Report

MERRICK
Engineers & Architects
2450 S. Peoria Street Aurora, Colorado 80014 (303)751-0741
Job Number: 50013142
Date: October 27, 1998