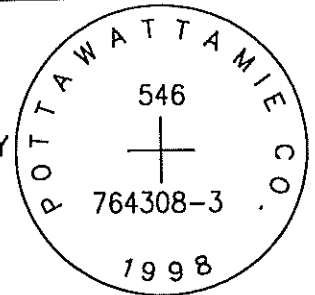


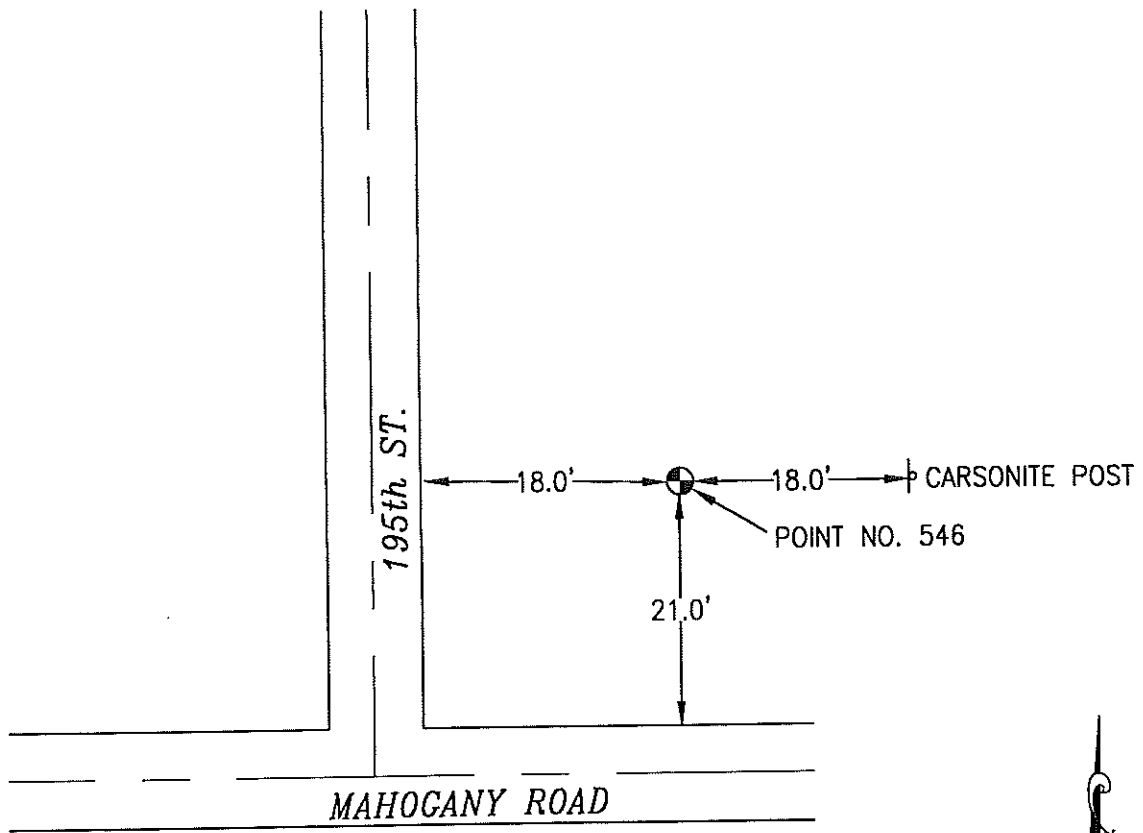
OK

546 764308-3

SET 5/8 INCH DIAMETER ROD WITH 2.5 INCH DIAMETER CAP, 0.3 BELOW GROUND, STAMPED "POTTAWATTAMIE CO. 1998, 546, 764308-3". LOCATED APPROXIMATELY 18 FEET EAST OF THE EAST EDGE OF 195TH STREET, 21 FEET NORTH OF THE NORTH EDGE OF MAHOGANY ROAD, 18 FEET WEST OF A CARSONITE POST. ON THE HONEY CREEK 7.5 MINUTE QUADRANGLE.

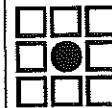


PT#	NAME OR DESIGNATION	GEODETTIC NAD83 (1996)		HEIGHT ELLIPSOID METERS	SP NAD83 (1996) IOWA SOUTH HEIGHT			SP NAD83 (1996) IOWA SOUTH HEIGHT		
		LATITUDE (North) DEG MIN SEC	LONGITUDE (West) DEG MIN SEC		NORTHING METERS	EASTING METERS	NAV88 METERS	NORTHING US FEET	EASTING US FEET	NAV88 US FEET
546	764308-3	41 23 29.93264	95 49 22.47776	292.97	157135.36	305754.987	321.14	515534.95	1003131.15	1053.6



NOT TO SCALE

LOCATION DIAGRAM
POTTAWATTAMIE COUNTY IOWA
GIS Mapping Project
GPS Survey Report



MERRICK

Engineers & Architects

2450 S. Pearl Street Aurora, Colorado 80014 (303)751-0741

Job Number: 50013142

Date: October 27, 1998