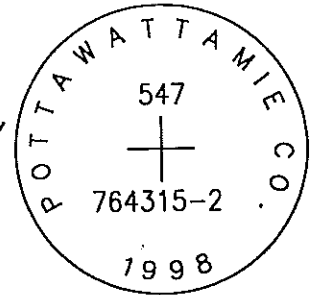


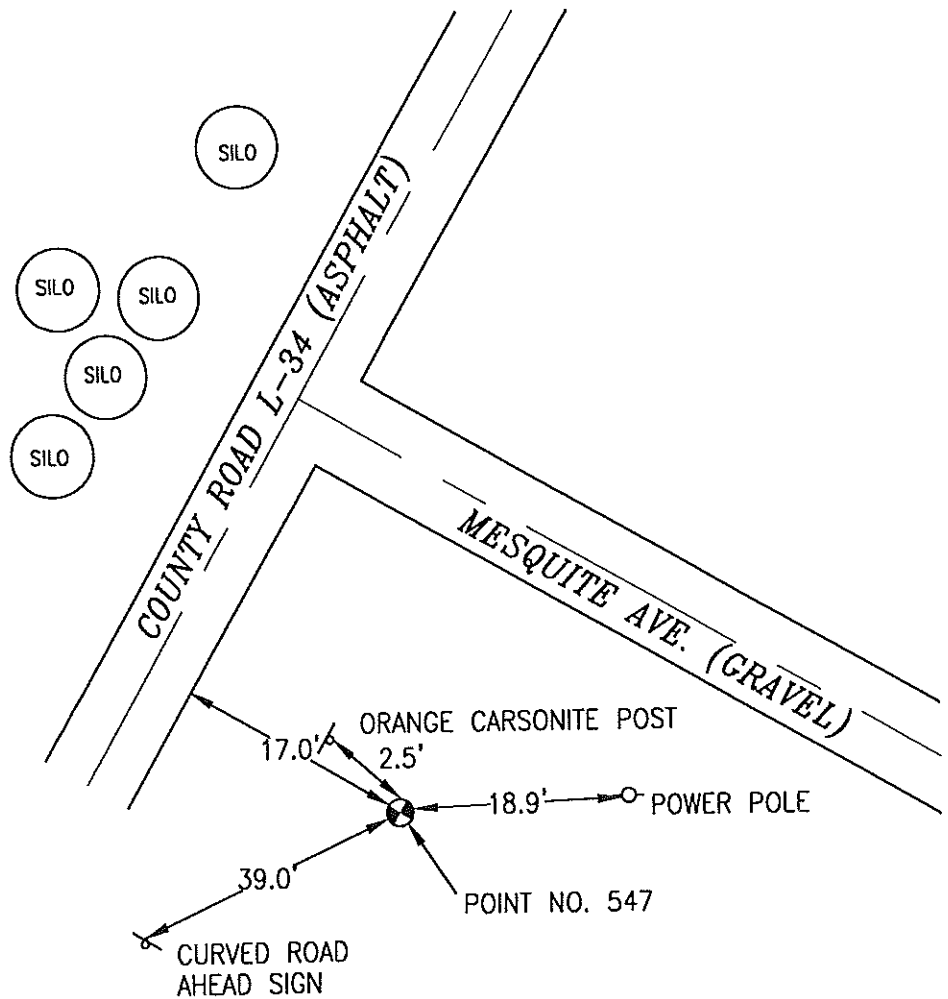
547

764315-2

SET 5/8 INCH DIAMETER ROD WITH 2.5 INCH DIAMETER CAP, 0.3 BELOW GROUND, STAMPED "POTTAWATTAMIE CO. 1998, 547, 764315-2". LOCATED APPROXIMATELY 17 FEET EAST OF THE EAST EDGE OF ASPHALT COUNTY ROAD L34, ON THE SOUTH SIDE OF MESQUITE AVENUE, 18.9 FEET WEST OF A POWERPOLE WITH GUY ANCHOR, 39 FEET NORTHEAST OF A TRAFFIC CURVE ROAD SIGN, 2.5 FEET EAST OF AN ORANGE CARSONITE POST. ON THE HONEY CREEK 7.5 MINUTE QUADRANGLE.



PT#	NAME OR DESIGNATION	GEODETIC NAD83 (1996)		HEIGHT ELLIPSOID METERS	SP NAD83 (1996) IOWA SOUTH		HEIGHT NAVD88 METERS	SP NAD83 (1996) IOWA SOUTH		HEIGHT NAVD88 US FEET
		LATITUDE (North) DEG MIN SEC	LONGITUDE (West) DEG MIN SEC		NORTHING METERS	EASTING METERS		NORTHING US FEET	EASTING US FEET	
547	764315-2	41 23 00.59944	95 46 13.18574	365.61	156114.683	310127.267	393.70	512186.26	1017475.88	1291.7



NOT TO SCALE

LOCATION DIAGRAM
 POTTAWATTAMIE COUNTY IOWA
 GIS Mapping Project
 GPS Survey Report



MERRICK

Engineers & Architects

2450 S. Peoria Street Aurora, Colorado 80014 (303)751-0741

Job Number: 50013142
 Date: October 27, 1998