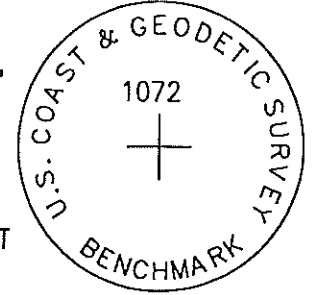


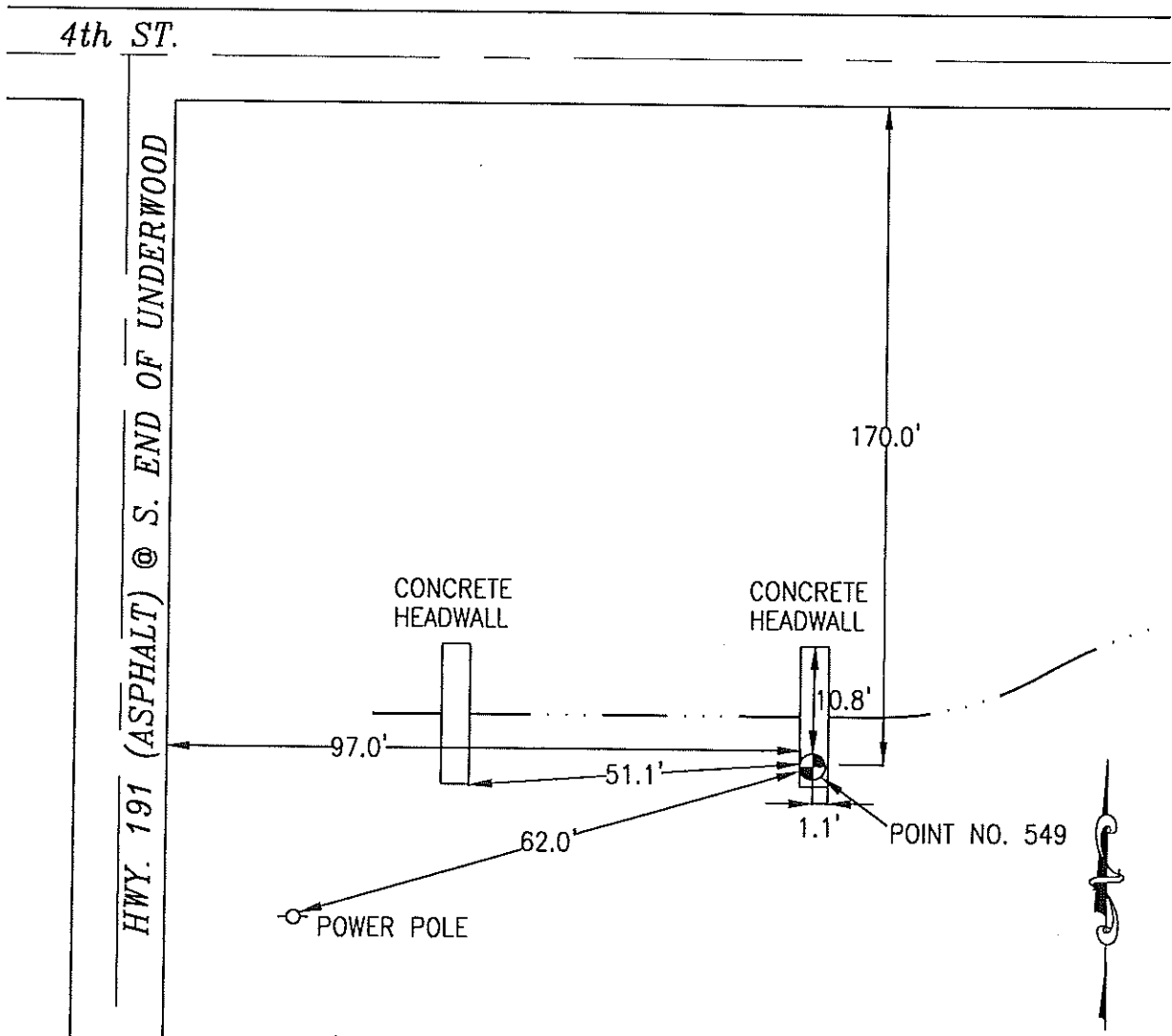
Needs Post Near Marker

549 NGS-1072

FOUND 3.5 INCH DIAMETER BRASS CAP IN TOP OF OLD RR CONCRETE HEADWALL, STAMPED "U. S. COAST & GEODETIC SURVEY BM 1072." LOCATED APPROXIMATELY 97 FEET EAST OF THE EAST EDGE OF ASPHALT HIGHWAY 191, 170 FEET SOUTH OF 4TH STREET IN UNDERWOOD, 62 FEET NORTHEAST OF POWERPOLE, 1.1 FEET WEST OF EAST EDGE OF CONCRETE HEADWALL, 10.85 FEET SOUTH OF NORTH EDGE OF CONCRETE HEADWALL, 51.1 FEET EAST OF SOUTHEAST CORNER OF WESTERLY CONCRETE HEADWALL. SEE NGS CONTROL. ON THE UNDERWOOD 7.5 MINUTE QUADRANGLE.

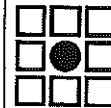


PT#	NAME OR DESIGNATION	GEODEIC NAD83 (1996)			HEIGHT ELLIPSOID METERS	SP NAD83 (1996) IOWA SOUTH HEIGHT			SP NAD83 (1996) IOWA SOUTH HEIGHT		
		LATITUDE (North) DEG MIN SEC	LONGITUDE (West) DEG MIN SEC			NORTHING METERS	EASTING METERS	NAVD88 METERS	NORTHING US FEET	EASTING US FEET	NAVD88 US FEET
549	NGS-1072	41 23 08.15437	95 40 46.84515		298.89	156153.743	317712.763	326.96	512314.41	1042362.62	1072.7



NOT TO SCALE

LOCATION DIAGRAM
 POTTAWATTAMIE COUNTY IOWA
 GIS Mapping Project
 GPS Survey Report



MERRICK

Engineers & Architects

2450 S. Pearl Street Aurora, Colorado 80014 (303)751-0741

Job Number: 50013142

Date: October 23, 1998