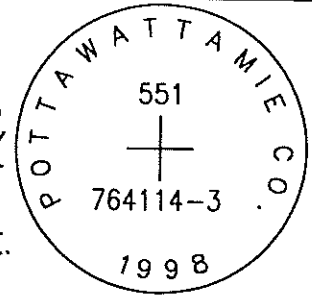


OK

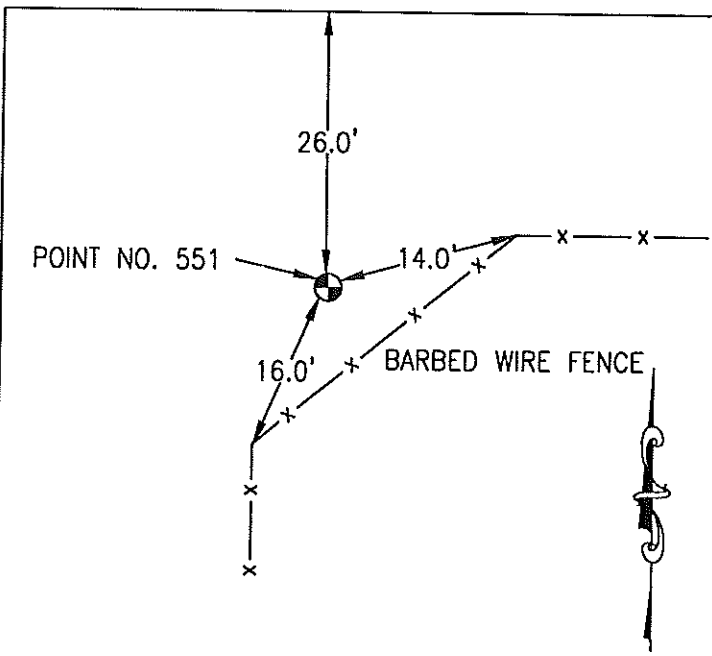
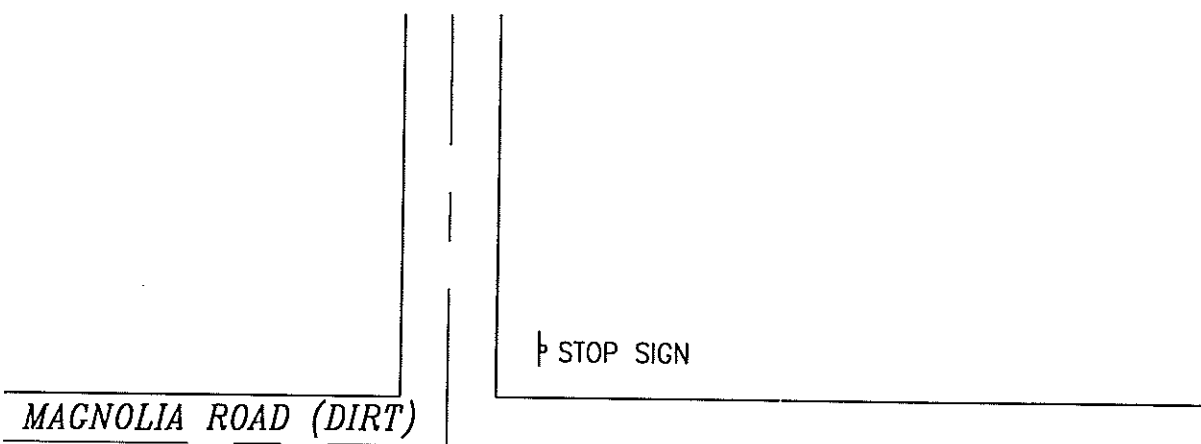
551

764114-3

SET 5/8 INCH DIAMETER ROD WITH 2.5 INCH DIAMETER CAP, 0.2 BELOW GROUND, STAMPED "POTTAWATTAMIE CO. 1998, 551, 764114-3". LOCATED APPROXIMATELY 26 FEET SOUTH OF THE SOUTH EDGE OF MAGNOLIA ROAD, ON THE EAST SIDE OF COUNTY ROAD L66, 14 FEET SOUTHWEST OF A FENCE ANGLE POINT, 16 FEET NORTHEAST OF A FENCE ANGLE POINT. ON THE NEOLA 7.5 MINUTE QUADRANGLE.



| PT# | NAME OR DESIGNATION | GEODETIC NAD83 (1996) | | HEIGHT ELLIPSOID METERS | SP NAD83 (1996) IOWA SOUTH | | | SP NAD83 (1996) IOWA SOUTH | | |
|-----|---------------------|------------------------------|------------------------------|-------------------------|----------------------------|----------------|----------------------|----------------------------|-----------------|-----------------------|
| | | LATITUDE (North) DEG MIN SEC | LONGITUDE (West) DEG MIN SEC | | NORTHING METERS | EASTING METERS | HEIGHT NAVD88 METERS | NORTHING US FEET | EASTING US FEET | HEIGHT NAVD88 US FEET |
| 551 | 764114-3 | 41 22 59.87474 | 95 32 10.63443 | 369.14 | 155607.777 | 329696.422 | 397.03 | 510523.18 | 1081679.01 | 1302.6 |



NOT TO SCALE

LOCATION DIAGRAM
POTTAWATTAMIE COUNTY IOWA
GIS Mapping Project
GPS Survey Report

MERRICK
Engineers & Architects
2450 S. Pearl Street Aurora, Colorado 80014 (303)751-0741
Job Number: 50013142
Date: October 27, 1998