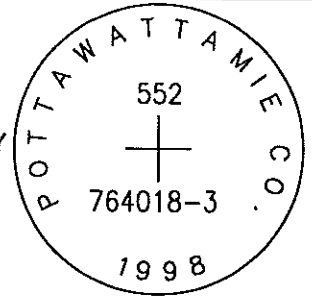


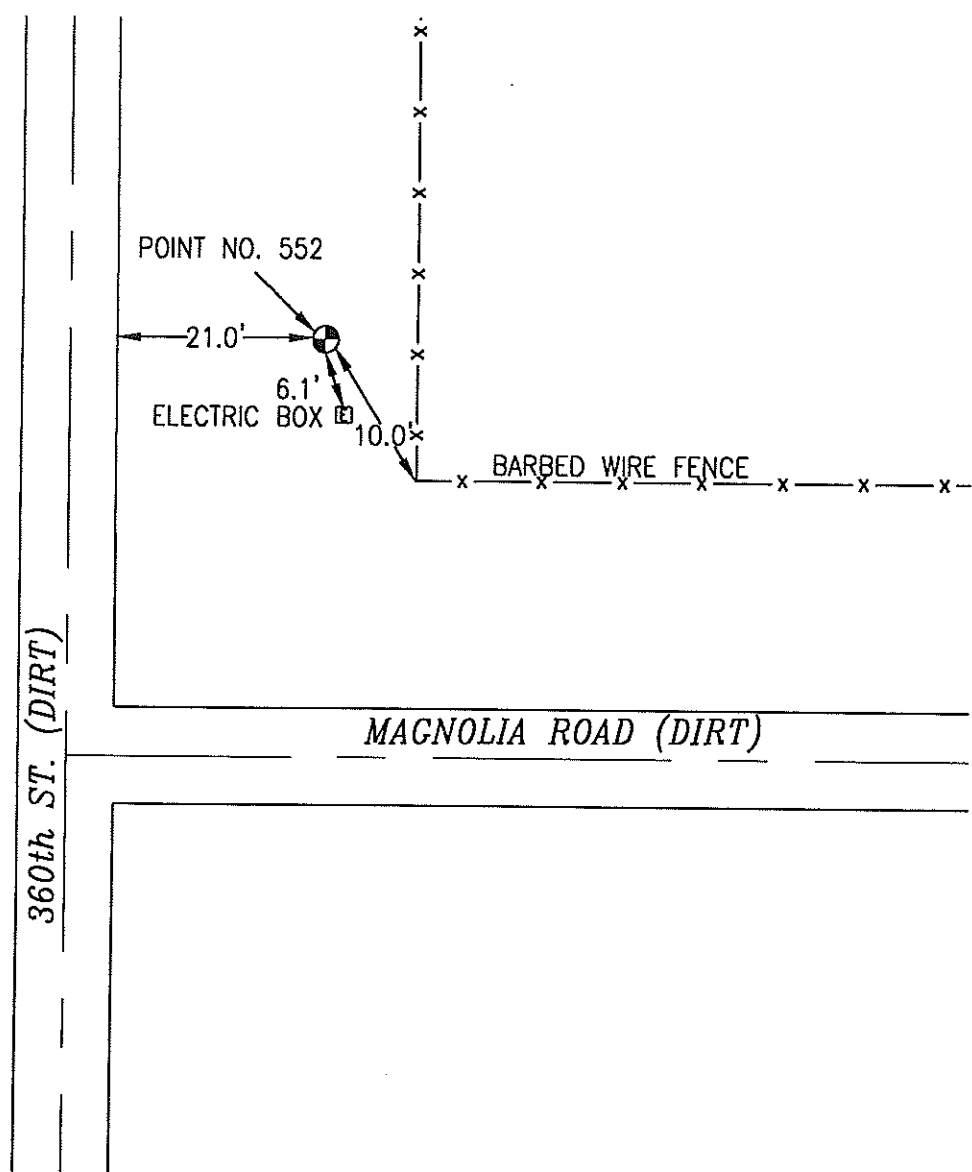
OK

552 764018-3

SET 5/8 INCH DIAMETER ROD WITH 2.5 INCH DIAMETER CAP, 0.2 BELOW GROUND, STAMPED "POTTAWATTAMIE CO. 1998, 552, 764018-3". LOCATED APPROXIMATELY 21 FEET EAST OF THE EAST EDGE OF 360TH STREET, 10 FEET NORTHWEST OF A FENCE CORNER, 6.1 FEET NORTHWEST OF AN ELECTRIC BOX. ON THE AVOCA NW 7.5 MINUTE QUADRANGLE.

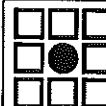


PT#	NAME OR DESIGNATION	GEODETTIC NAD83 (1996)		HEIGHT ELLIPSOID METERS	SP NAD83 (1996) IOWA SOUTH HEIGHT			SP NAD83 (1996) IOWA SOUTH HEIGHT		
		LATITUDE (North) DEG MIN SEC	LONGITUDE (West) DEG MIN SEC		NORTHING METERS	EASTING METERS	NAVD88 METERS	NORTHING US FEET	EASTING US FEET	NAVD88 US FEET
552	764018-3	41 22 33.30843	95 29 52.22051	344.13	154713.884	332892.629	371.96	507590.47	1092165.23	1220.3



NOT TO SCALE

LOCATION DIAGRAM
 POTTAWATTAMIE COUNTY IOWA
 GIS Mapping Project
 GPS Survey Report



MERRICK

Engineers & Architects

2450 S. Peoria Street Aurora, Colorado 80014 (303)751-0741

Job Number: 50013142

Date: October 27, 1998