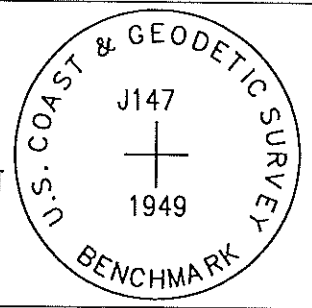


OK

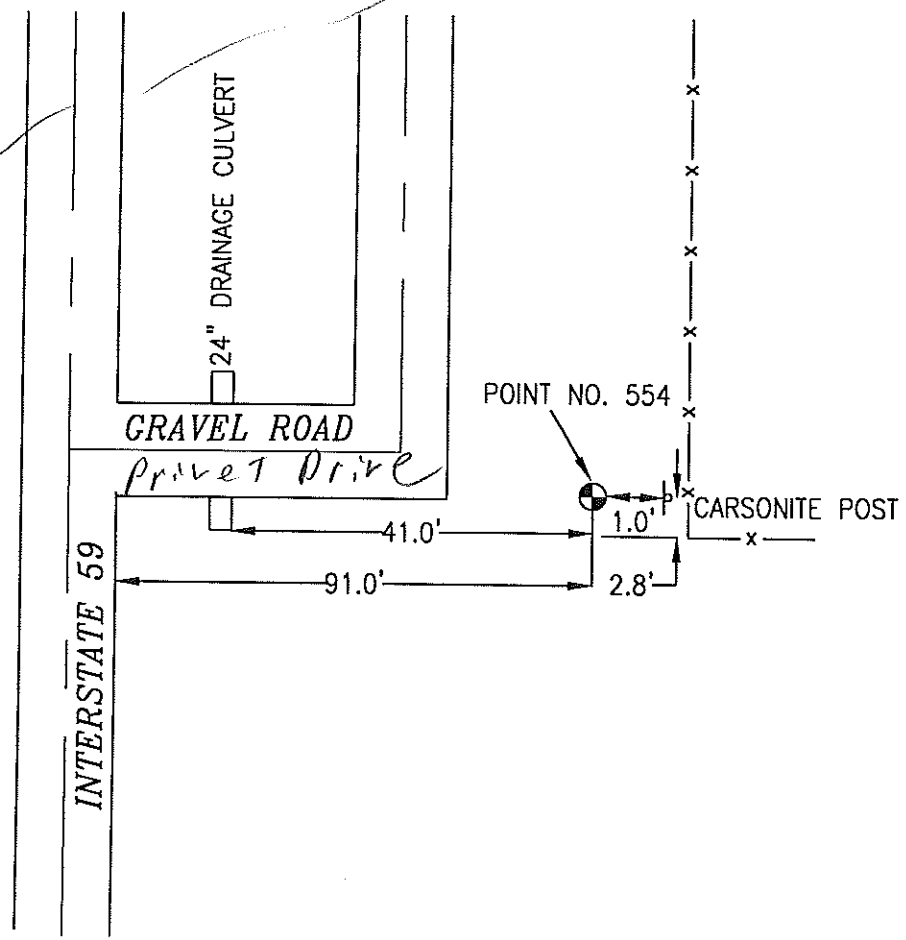
554 J147

FOUND A 3.5 INCH DIAMETER BRASS CAP IN A CONCRETE POST 0.3 FT ABOVE GROUND, STAMPED "U. S. COAST AND GEODETIC SURVEY J147 1949". LOCATED APPROXIMATELY 91 FEET EAST OF THE EAST EDGE OF HIGHWAY 59, 41 FEET EAST OF THE CENTER OF A 24 INCH DIAMETER DRAINAGE CULVERT, 2.8 FEET NORTH OF AN EAST-WEST FENCE CORNER, 1 FOOT WEST OF A CARSONITE POST. ON THE AVOCA 7.5 MINUTE QUADRANGLE.



PT#	NAME OR DESIGNATION	GEODETC NAD83 (1996)			HEIGHT ELLIPSOID METERS	SP NAD83 (1996) IOWA SOUTH HEIGHT				
		LATITUDE (North) DEG MIN SEC	LONGITUDE (West) DEG MIN SEC	NORTHING US FEET		EASTING US FEET	HEIGHT NAVD88 METERS			
554	J 147	41 22 56.22149	95 22 5.97827	310.21	155179.816	343738.974	337.93	509119.11	1127750.28	1108.7

R.R.



NOT TO SCALE

LOCATION DIAGRAM
 POTTAWATTAMIE COUNTY IOWA
 GIS Mapping Project
 GPS Survey Report

MERRICK
 Engineers & Architects
 2450 S. Peoria Street Aurora, Colorado 80014 (303)751-0741
 Job Number: 50013142
 Date: October 23, 1998