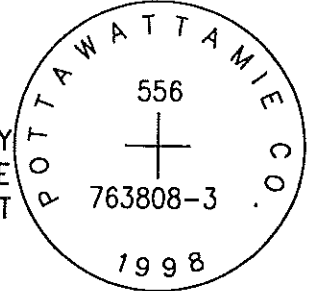


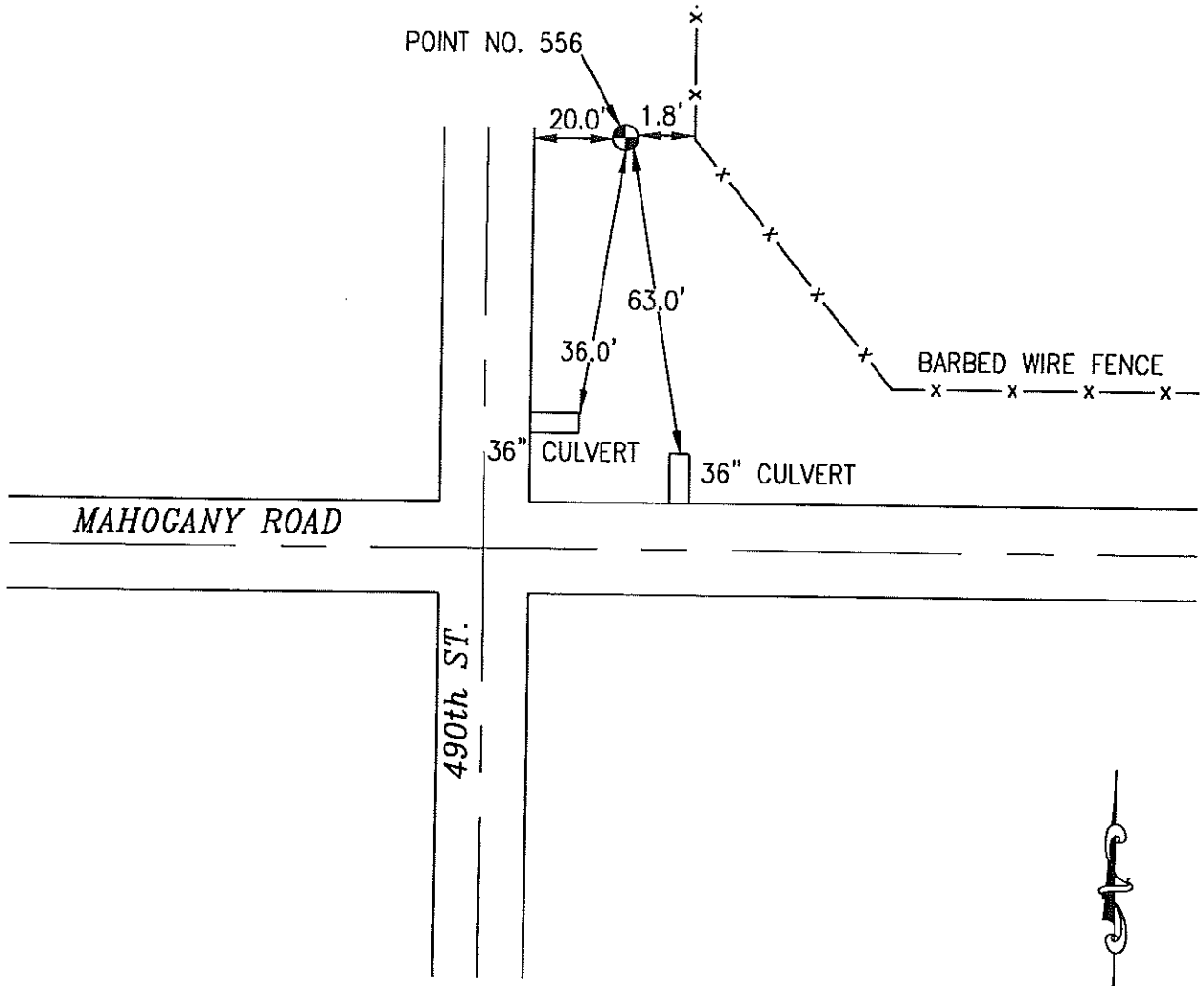
OK

556 763808-3



SET 5/8 INCH DIAMETER ROD WITH 2.5 INCH DIAMETER CAP, 0.3 BELOW GROUND, STAMPED "POTTAWATTAMIE CO. 1998, 556, 763808-3". LOCATED APPROXIMATELY 20 FEET EAST OF THE EAST EDGE OF 490TH STREET, 1.8 FEET WEST OF A FENCE CORNER, 36 FEET NORTHEAST OF THE FLOWLINE OF A 36 INCH CULVERT, 63 FEET NORTH OF THE FLOWLINE OF A 36 INCH CULVERT. ON THE WALNUT 7.5 MINUTE QUADRANGLE.

PT#	NAME OR DESIGNATION	GEODEIC NAD83 (1996)		HEIGHT ELLIPSOID METERS	SP NAD83 (1996) IOWA SOUTH		HEIGHT NAVD88 METERS	SP NAD83 (1996) IOWA SOUTH		HEIGHT NAVD88 METERS
		LATITUDE (North) DEG MIN SEC	LONGITUDE (West) DEG MIN SEC		NORTHING METERS	EASTING METERS		NORTHING US FEET	EASTING US FEET	
556	763808-3	41 23 24.55514	95 15 04.25227	363.12	155849.851	353552.934	390.76	511317.39	1159948.25	1282.0



NOT TO SCALE

LOCATION DIAGRAM  
POTTAWATTAMIE COUNTY IOWA  
GIS Mapping Project  
GPS Survey Report

**MERRICK**  
Engineers & Architects  
2450 S. Pearl Street Aurora, Colorado 80014 (303)751-0741  
Job Number: 50013142  
Date: October 27, 1998