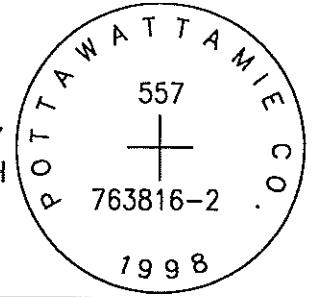


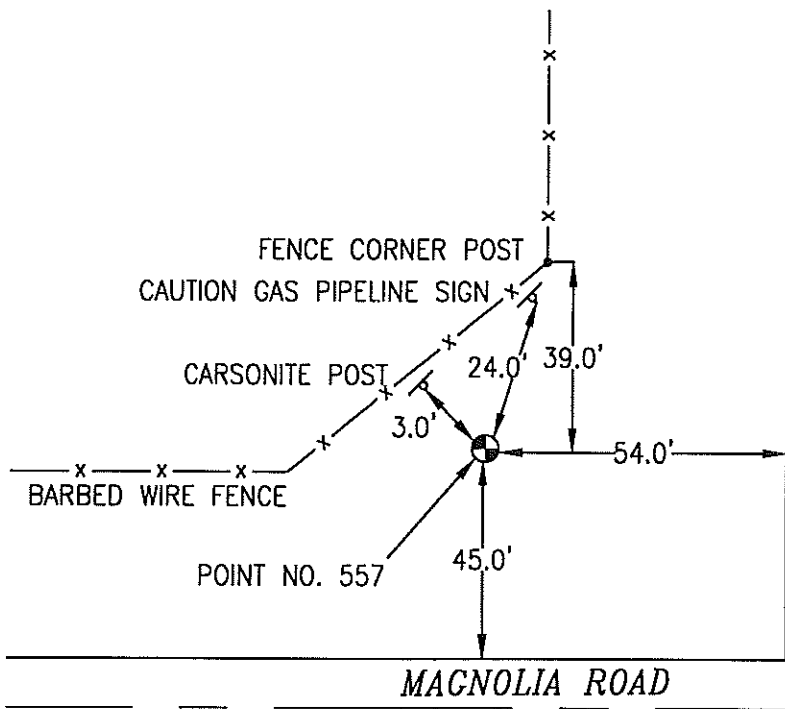
OK

557 763816-2



SET 5/8 INCH DIAMETER ROD WITH 2.5 INCH DIAMETER CAP, 0.3 BELOW GROUND, STAMPED "POTTAWATTAMIE CO. 1998, 557, 763816-2". LOCATED APPROXIMATELY 54 FEET WEST OF THE WEST EDGE 510TH STREET, 45 FEET NORTH OF THE NORTH EDGE OF MAGNOLIA ROAD, 3 FEET SOUTHWEST OF A CARSONITE POST, 39 FEET SOUTHWEST OF A FENCE ANGLE POINT, 24 FEET SOUTH-SOUTHWEST OF A "CAUTION GAS PIPELINE" SIGN. ON THE WALNUT 7.5 MINUTE QUADRANGLE.

| PT# | NAME OR DESIGNATION | GEODETTIC NAD83 (1996) | | HEIGHT ELLIPSOID METERS | SP NAD83 (1996) IOWA SOUTH HEIGHT | | | SP NAD83 (1996) IOWA SOUTH HEIGHT | | |
|-----|---------------------|------------------------------|------------------------------|-------------------------|-----------------------------------|----------------|---------------|-----------------------------------|-----------------|----------------|
| | | LATITUDE (North) DEG MIN SEC | LONGITUDE (West) DEG MIN SEC | | NORTHING METERS | EASTING METERS | NAVD88 METERS | NORTHING US FEET | EASTING US FEET | NAVD88 US FEET |
| 557 | 763816-2 | 41 22 32.34996 | 95 12 46.77160 | 376.20 | 154176.094 | 356714.464 | 403.81 | 505826.07 | 1170320.70 | 1324.8 |



NOT TO SCALE

LOCATION DIAGRAM
 POTTAWATTAMIE COUNTY IOWA
 GIS Mapping Project
 GPS Survey Report

MERRICK
 Engineers & Architects
 2450 S. Peoria Street Aurora, Colorado 80014 (303)751-0741
 Job Number: 50013142
 Date: October 28, 1998