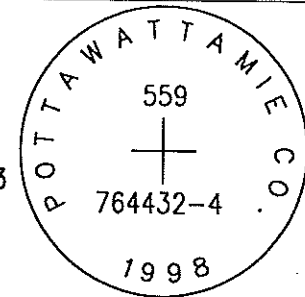


OK

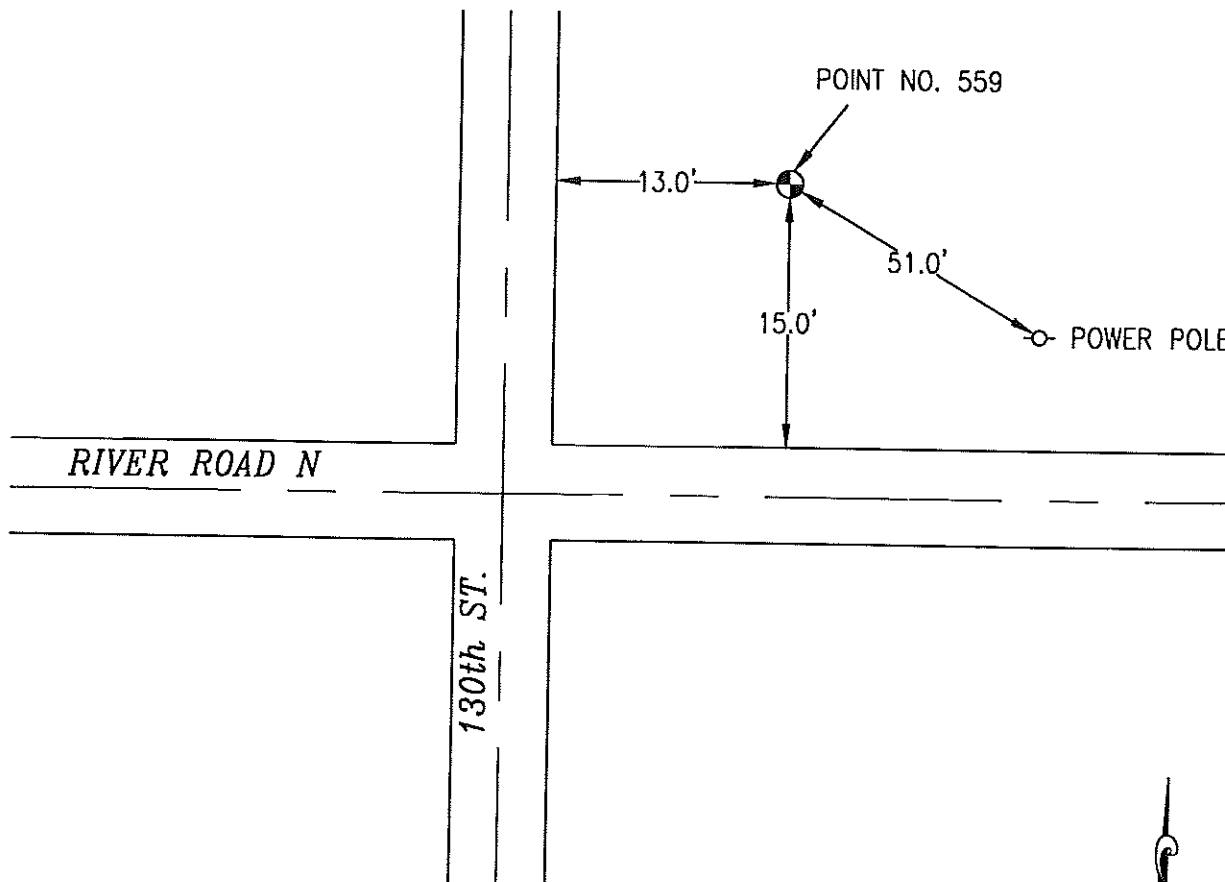
559

764432-4

SET 5/8 INCH DIAMETER ROD WITH 2.5 INCH DIAMETER CAP, 0.3 FEET BELOW GROUND, STAMPED "POTTAWATTAMIE CO. 1998, 559, 764432-4". LOCATED APPROXIMATELY 15 FEET NORTH OF THE NORTH EDGE OF RIVER ROAD NORTH, 13 FEET EAST OF THE EAST EDGE OF 130TH STREET, 51 FEET NORTHWEST OF A POWERPOLE. ON THE OMAHA NORTH 7.5 MINUTE QUADRANGLE.



PT#	NAME OR DESIGNATION	GEODETIC NAD83 (1996)		HEIGHT ELLIPSOID METERS	SP NAD83 (1996) IOWA SOUTH HEIGHT			SP NAD83 (1996) IOWA SOUTH HEIGHT		
		LATITUDE (North) DEG MIN SEC	LONGITUDE (West) DEG MIN SEC		NORTHING METERS	EASTING METERS	SOUTH HEIGHT NAVD88 METERS	NORTHING US FEET	EASTING US FEET	NAV88 US FEET
559	764432-4	41 20 38.53105	95 56 10.54709	272.19	152109.209	296130.629	300.11	499044.96	971555.24	984.6



NOT TO SCALE

LOCATION DIAGRAM
POTTAWATTAMIE COUNTY IOWA
GIS Mapping Project
GPS Survey Report

MERRICK
Engineers & Architects
2450 S. Peoria Street Aurora, Colorado 80014 (303)751-0741
Job Number: 50013142
Date: October 28, 1998