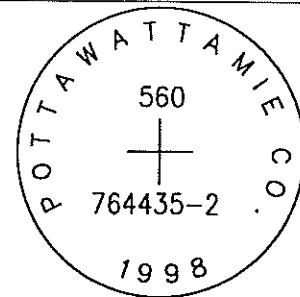


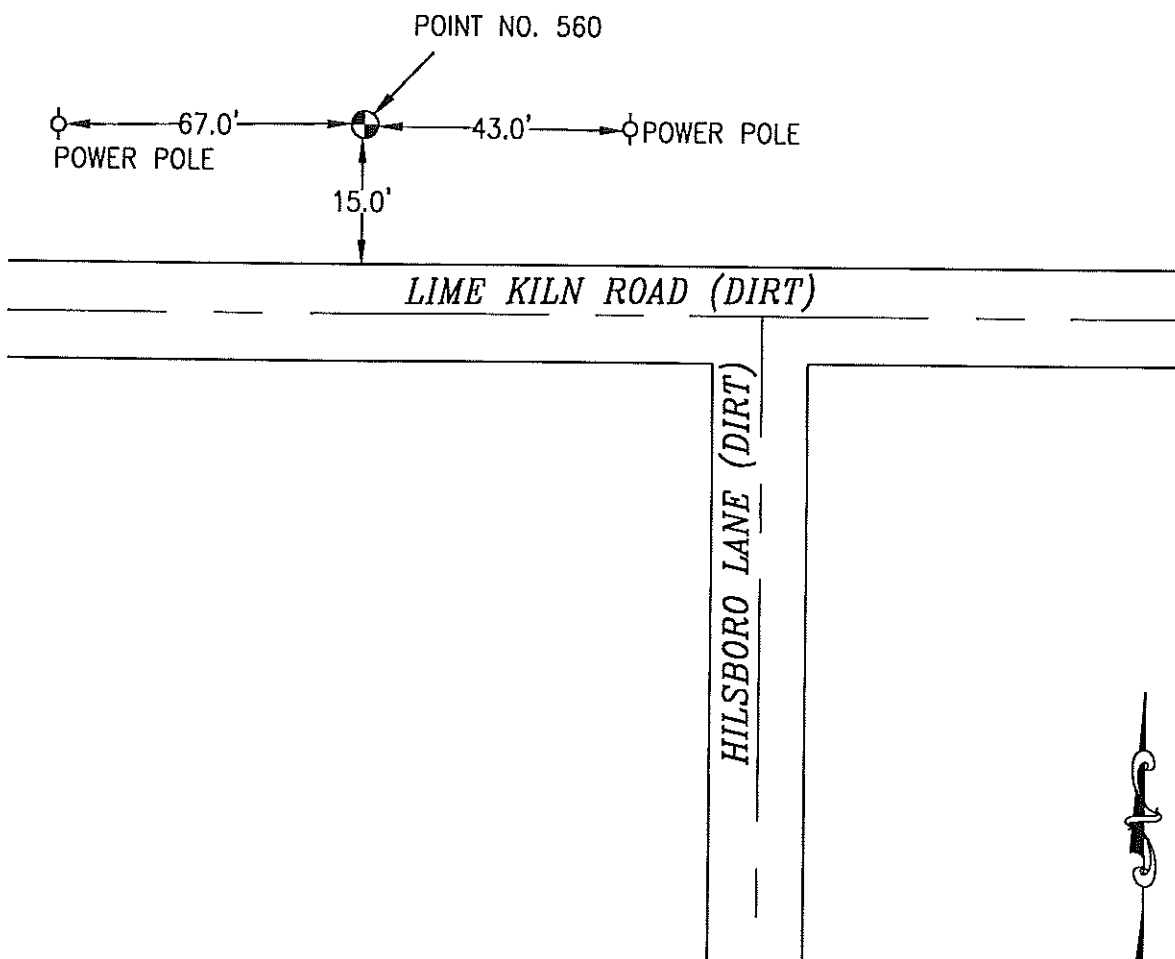
Check R WATER MAY have moved IT

560 764435-2

SET 5/8 INCH DIAMETER ROD WITH 2.5 INCH DIAMETER CAP, 0.3 FEET BELOW GROUND, STAMPED "POTTAWATTAMIE CO. 1998, 560, 764435-2". LOCATED APPROXIMATELY 15 FEET NORTH OF THE NORTH EDGE OF LIME KILN ROAD, WEST OF HILLSBORO LANE, 43 FEET WEST OF A POWERPOLE, 67 FEET EAST OF A POWERPOLE. ON THE COUNCIL BLUFFS NORTH 7.5 MINUTE QUADRANGLE.



PT#	NAME OR DESIGNATION	GEODEIC NAD83 (1996)			HEIGHT ELLIPSOID METERS	SP NAD83 (1996) IOWA SOUTH HEIGHT			SP NAD83 (1996) IOWA SOUTH HEIGHT		
		LATITUDE (North) DEG MIN SEC	LONGITUDE (West) DEG MIN SEC			NORTHING METERS	EASTING METERS	NAV88 METERS	NORTHING US FEET	EASTING US FEET	NAV88 US FEET
560	764435-2	41 20 11.11333	95 52 9.88779	305.64	151109.191	301700.260	333.51	495764.07	989828.27	1094.2	



NOT TO SCALE

LOCATION DIAGRAM
 POTTAWATTAMIE COUNTY IOWA
 GIS Mapping Project
 GPS Survey Report



MERRICK

Engineers & Architects

2450 S. Peoria Street Aurora, Colorado 80014 (303)751-0741

Job Number: 50013142

Date: October 28, 1998