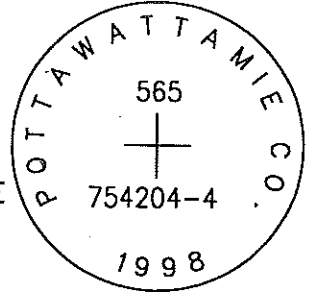
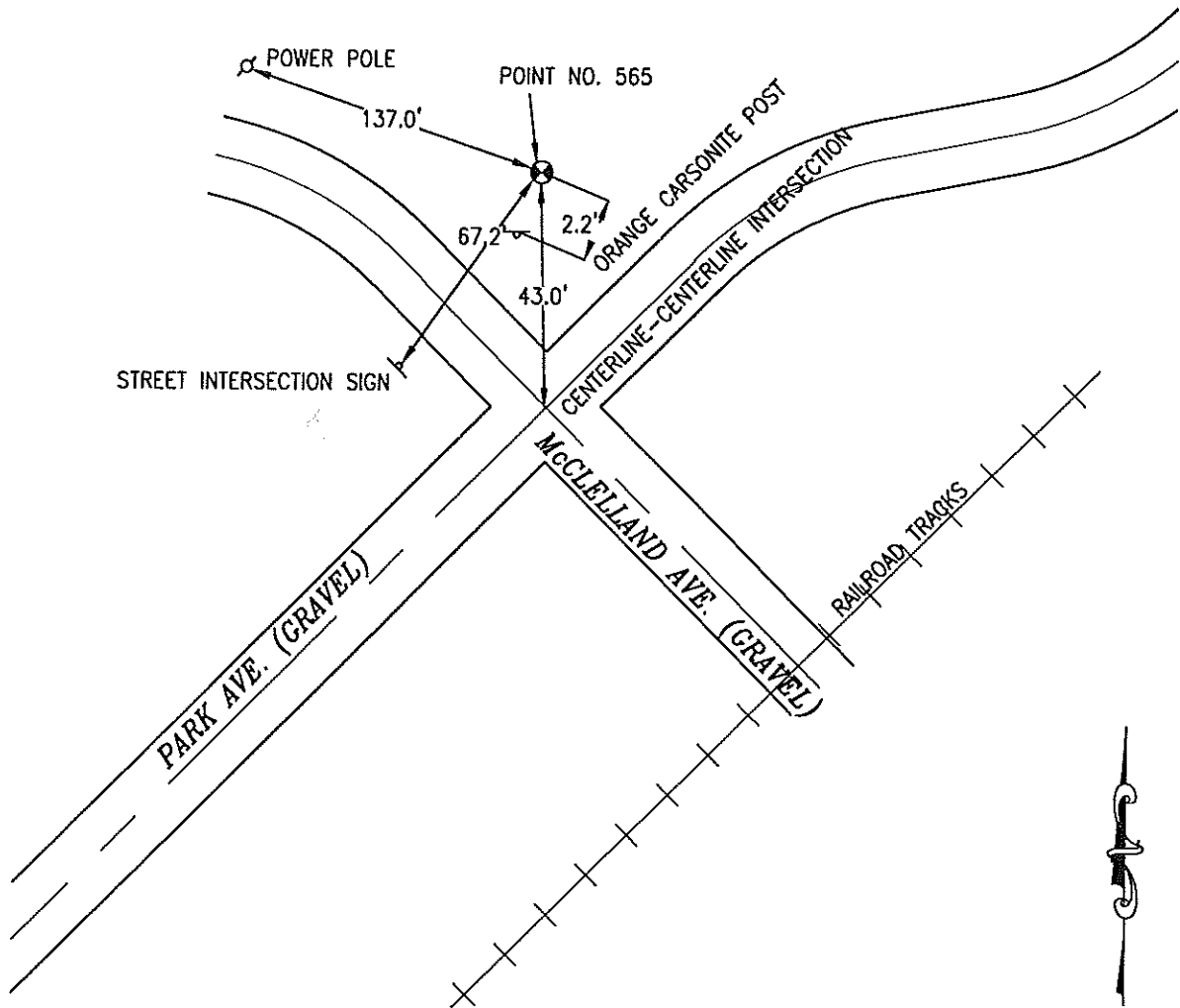


565 754204-4



SET 5/8 INCH DIAMETER ROD WITH 2.5 INCH DIAMETER CAP, 0.5 FEET BELOW GROUND, STAMPED "POTTAWATTAMIE CO. 1998, 565, 754204-4". LOCATED APPROXIMATELY 2.2 FEET NORTH-NORTHEAST OF AN ORANGE CARSONITE POST, 137 FEET SOUTHEAST OF A POWERPOLE, 43 FEET NORTHEAST OF THE CENTERLINE INTERSECTION OF PARK AVENUE AND MCCLELLAND AVENUE, 67.2 FEET NORTHEAST OF A STREET INTERSECTION SIGN, NORTHWEST OF RAILROAD TRACKS. ON THE MCCLELLAND 7.5 MINUTE QUADRANGLE.

| PT# | NAME OR DESIGNATION | GEODETC NAD83 (1996) | | HEIGHT ELLIPSOID METERS | SP NAD83 (1996) IOWA SOUTH HEIGHT | | | SP NAD83 (1996) IOWA SOUTH HEIGHT | | |
|-----|---------------------|------------------------------|------------------------------|-------------------------|-----------------------------------|----------------|---------------|-----------------------------------|-----------------|----------------|
| | | LATITUDE (North) DEG MIN SEC | LONGITUDE (West) DEG MIN SEC | | NORTHING METERS | EASTING METERS | NAVD88 METERS | NORTHING US FEET | EASTING US FEET | NAVD88 US FEET |
| 565 | 754204-4 | 41 19 48.30268 | 95 41 06.89639 | 353.62 | 150002.201 | 317092.188 | 381.41 | 492132.22 | 1040326.62 | 1251.3 |



NOT TO SCALE

LOCATION DIAGRAM
 POTTAWATTAMIE COUNTY IOWA
 GIS Mapping Project
 GPS Survey Report

MERRICK
 Engineers & Architects
 2450 S. Pearl Street Aurora, Colorado 80014 (303)751-0741
 Job Number: 50013142
 Date: October 28, 1998