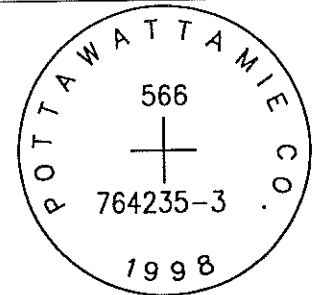


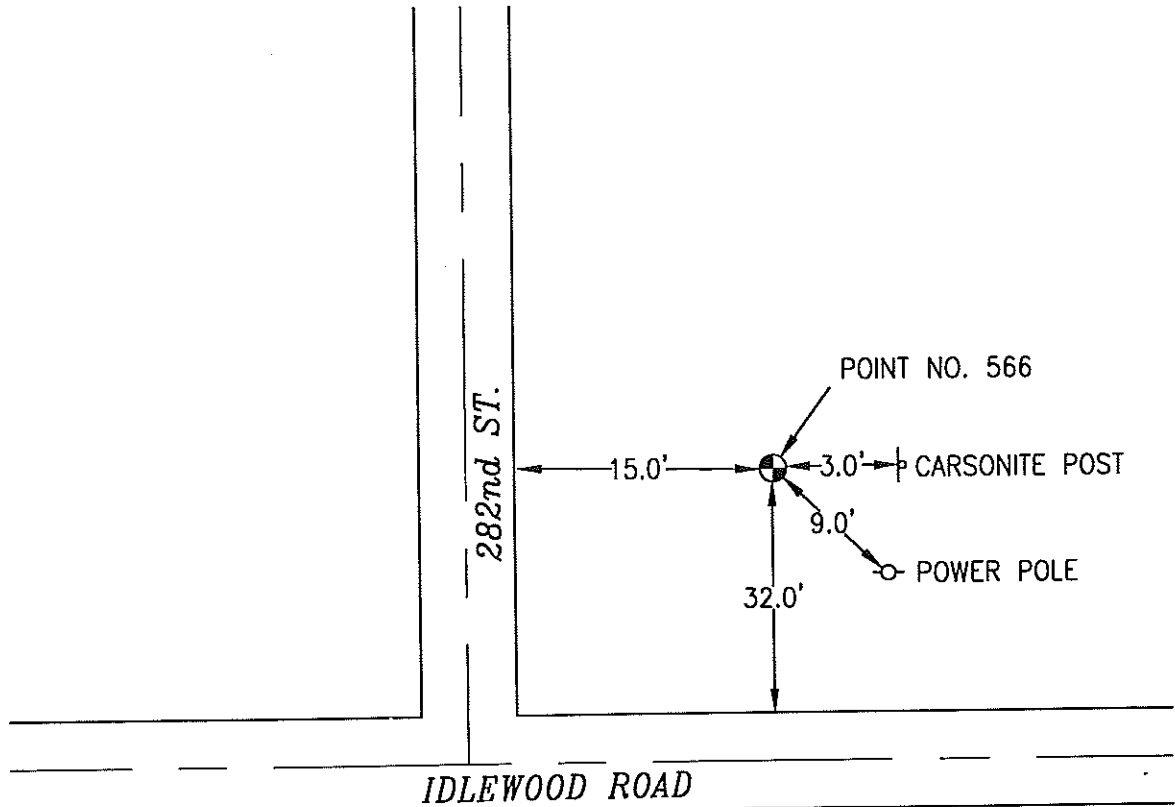
OK

566 764235-3



SET 5/8 INCH DIAMETER ROD WITH 2.5 INCH DIAMETER CAP, 0.4 FEET BELOW GROUND, STAMPED "POTTAWATTAMIE CO. 1998, 566, 764235-3". LOCATED APPROXIMATELY 15 FEET EAST OF THE EAST EDGE OF 282ND STREET, 32 FEET NORTH OF THE NORTH EDGE OF IDLEWOOD ROAD, 9 FEET NORTHWEST OF A POWERPOLE, 3 FEET WEST OF A CARSONITE POST. ON THE MCCLELLAND 7.5 MINUTE QUADRANGLE.

PT#	NAME OR DESIGNATION	GEODEIC NAD83 (1996)		HEIGHT ELLIPSOID METERS	SP NAD83 (1996) IOWA SOUTH HEIGHT			SP NAD83 (1996) IOWA SOUTH HEIGHT		
		LATITUDE (North) DEG MIN SEC	LONGITUDE (West) DEG MIN SEC		NORTHING METERS	EASTING METERS	NAV088 METERS	NORTHING US FEET	EASTING US FEET	NAV088 US FEET
566	764235-3	41 19 57.92514	95 38 45.29832	360.32	150216.984	320391.038	388.10	492836.89	1051149.60	1273.3



NOT TO SCALE

LOCATION DIAGRAM  
 POTTAWATTAMIE COUNTY IOWA  
 GIS Mapping Project  
 GPS Survey Report

**MERRICK**  
 Engineers & Architects  
 2450 S. Pearl Street Aurora, Colorado 80014 (303)751-0741  
 Job Number: 50013142  
 Date: October 28, 1998