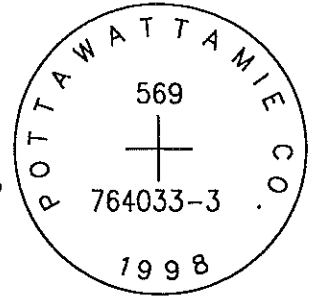


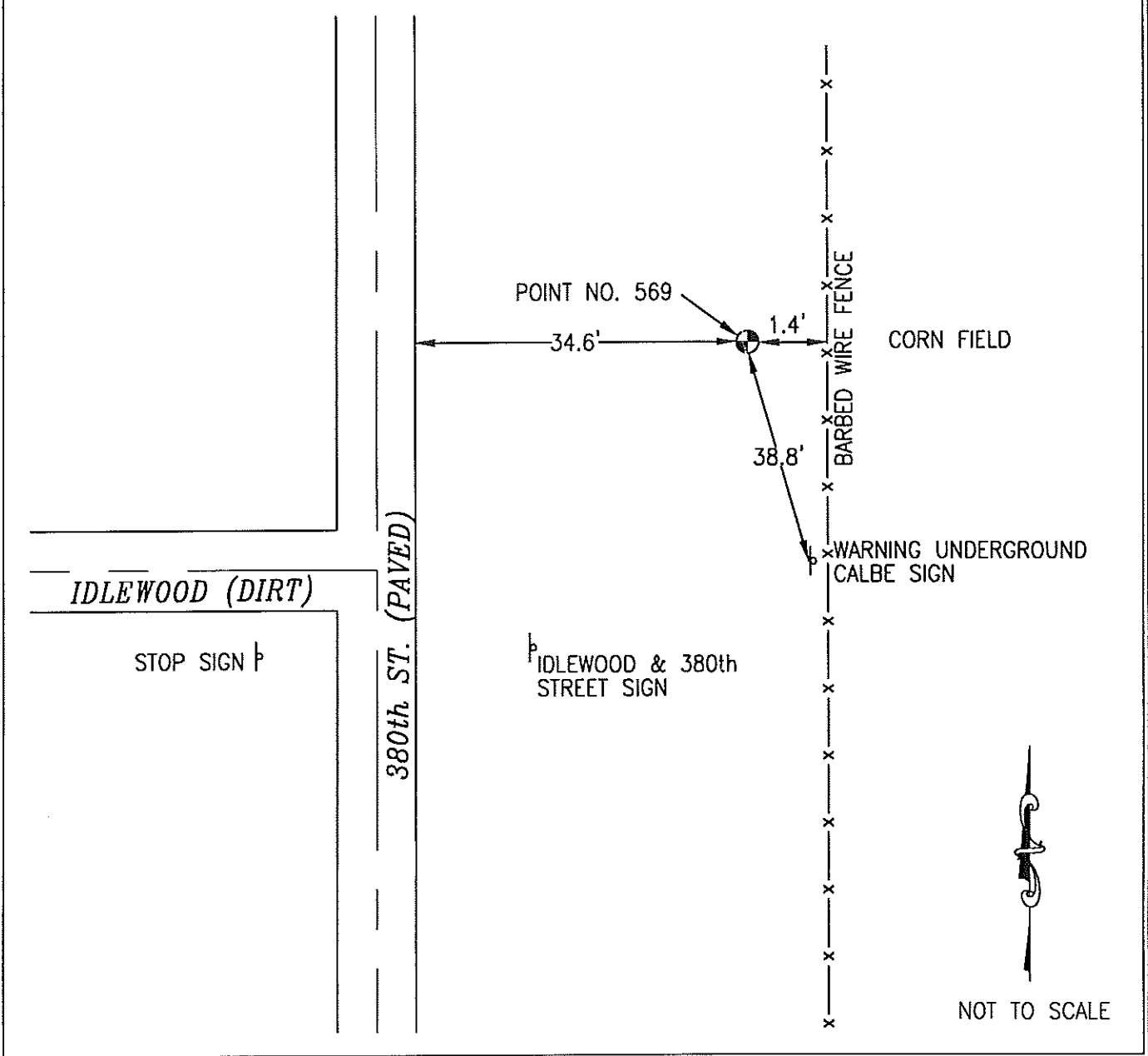
OK

569 764033-3

SET 5/8 INCH DIAMETER ROD WITH 2.5 INCH DIAMETER CAP, 0.2 FEET BELOW GROUND, STAMPED "POTTAWATTAMIE CO. 1998, 569, 764033-3". LOCATED APPROXIMATELY 34.6 FEET EAST OF THE EAST EDGE OF ASPHALT 380TH STREET, 38.8 FEET NORTH OF UNDERGROUND CABLE WARNING SIGN, 1.4 FEET WEST OF BARBED WIRE FENCE. ON THE OAKLAND 7.5 MINUTE QUADRANGLE.



| PT# | NAME OR DESIGNATION | GEODETIC NAD83 (1996) | | HEIGHT ELLIPSOID METERS | SP NAD83 (1996) IOWA SOUTH HEIGHT | | | SP NAD83 (1996) IOWA SOUTH HEIGHT | | |
|-----|---------------------|------------------------------|------------------------------|-------------------------|-----------------------------------|----------------|---------------|-----------------------------------|-----------------|----------------|
| | | LATITUDE (North) DEG MIN SEC | LONGITUDE (West) DEG MIN SEC | | NORTHING METERS | EASTING METERS | NAVD88 METERS | NORTHING US FEET | EASTING US FEET | NAVD88 US FEET |
| 569 | 764033-3 | 41 19 57.03442 | 95 27 38.63330 | 330.96 | 149823.627 | 335887.265 | 358.65 | 491546.35 | 1101990.14 | 1176.7 |



LOCATION DIAGRAM
 POTTAWATTAMIE COUNTY IOWA
 GIS Mapping Project
 GPS Survey Report

MERRICK
 Engineers & Architects
 2450 S. Peoria Street Aurora, Colorado 80014 (303)751-0741
 Job Number: 50013142
 Date: October 28, 1998