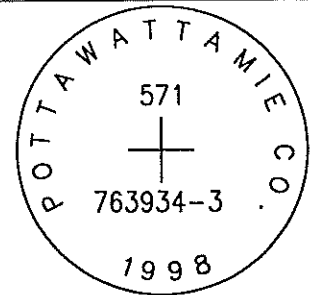


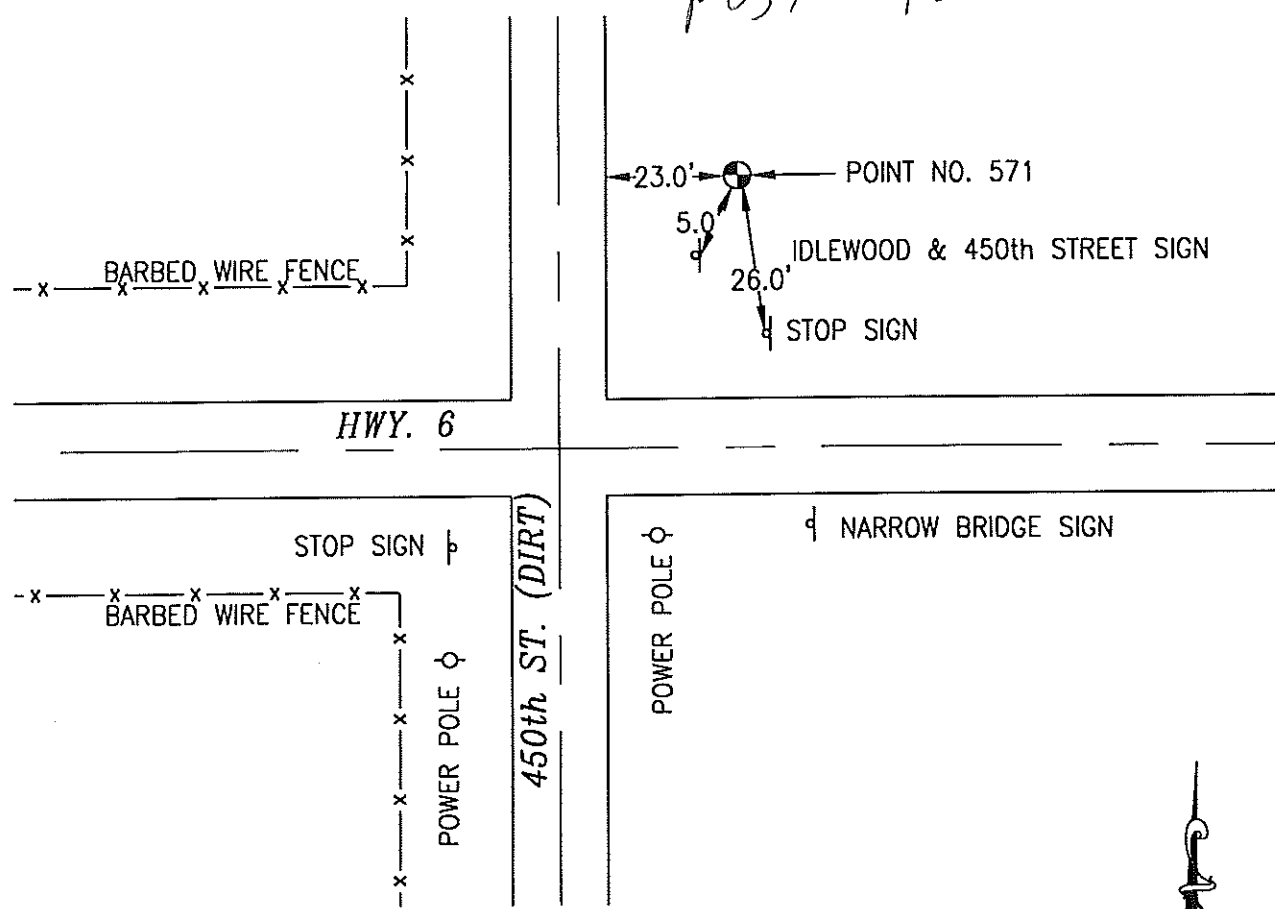
571 763934-3



SET 5/8 INCH DIAMETER ROD WITH 2.5 INCH DIAMETER CAP, 0.5 FEET BELOW GROUND, STAMPED "POTTAWATTAMIE CO. 1998, 571, 763934-3". LOCATED APPROXIMATELY 23 FEET EAST OF THE EAST EDGE OF 450TH STREET, 26 FEET NORTHWEST OF A STOP SIGN, 5 FEET NORTHEAST OF A STREET INTERSECTION SIGN (450TH AND IDLEWOOD). ON THE AVOCA SE 7.5 MINUTE QUADRANGLE.

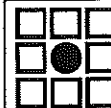
PT#	NAME OR DESIGNATION	GEODETC NAD83 (1996)		HEIGHT ELLIPSOID METERS	SP NAD83 (1996) IOWA SOUTH HEIGHT			SP NAD83 (1996) IOWA SOUTH HEIGHT		
		LATITUDE (North) DEG MIN SEC	LONGITUDE (West) DEG MIN SEC		NORTHING METERS	EASTING METERS	NAVD88 METERS	NORTHING US FEET	EASTING US FEET	NAVD88 US FEET
571	763934-3	41 19 56.02586	95 19 39.13017	325.48	149549.753	347033.325	353.12	490647.81	1138558.50	1158.5

CARSONITE
POST 450 & IDLEWOOD



NOT TO SCALE

LOCATION DIAGRAM
POTTAWATTAMIE COUNTY IOWA
GIS Mapping Project
GPS Survey Report



MERRICK

Engineers & Architects

2450 S. Peoria Street Aurora, Colorado 80014 (303)751-0741

Job Number: 50013142

Date: October 28, 1998