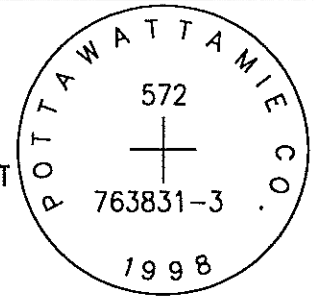


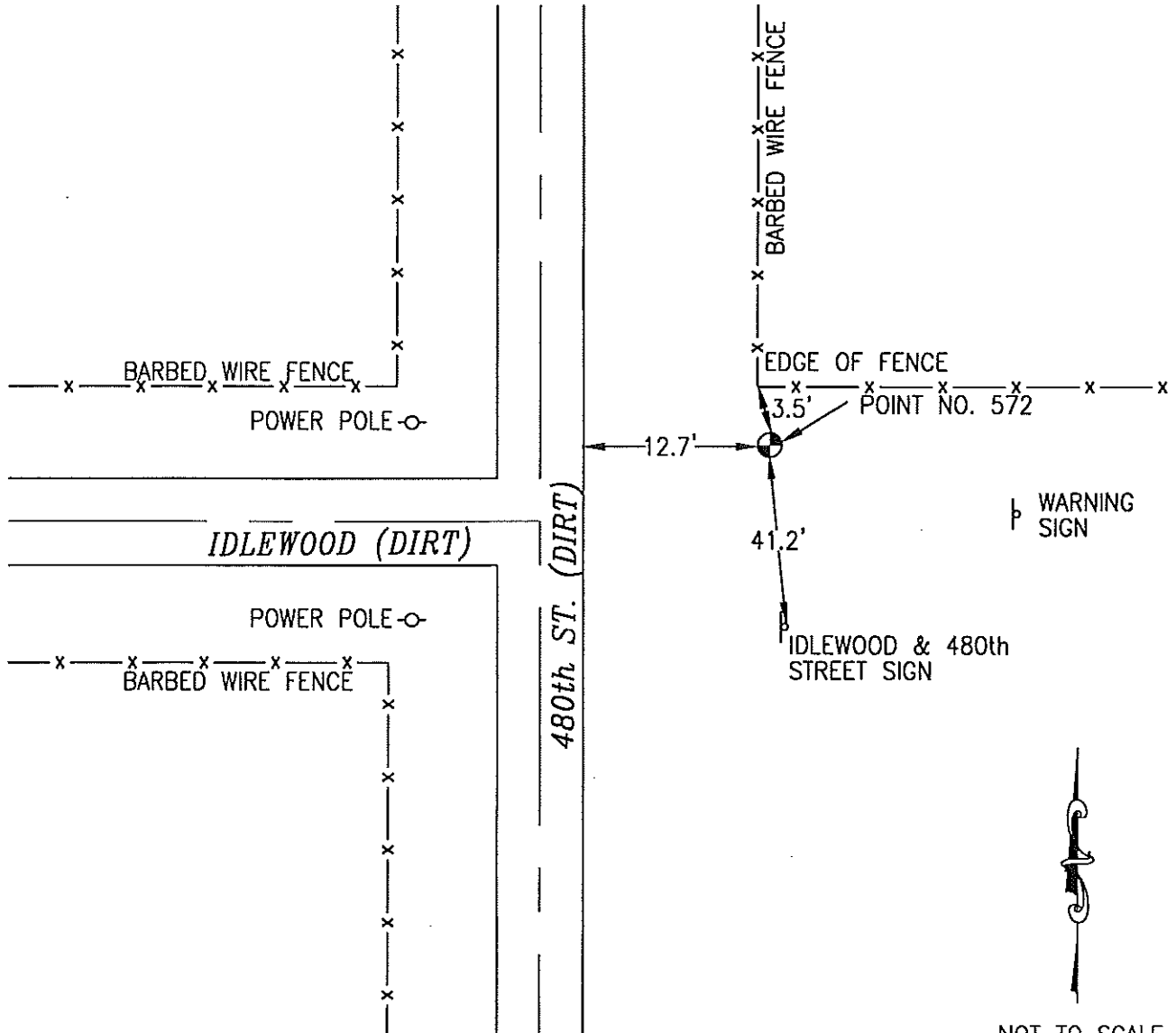
OK

572 763831-3

SET 5/8 INCH DIAMETER ROD WITH 2.5 INCH DIAMETER CAP, 0.5 FEET BELOW GROUND, STAMPED "POTTAWATTAMIE CO. 1998, 572, 763831-3". LOCATED APPROXIMATELY 12.7 FEET EAST OF THE EAST EDGE OF 480TH STREET, 41.2 FEET NORTH OF THE STREET INTERSECTION SIGN (480TH AND IDLEWOOD), 3.5 FEET SOUTH OF A FENCE CORNER. ON THE AVOCA SE 7.5 MINUTE QUADRANGLE.



PT#	NAME OR DESIGNATION	GEODEIC NAD83 (1996)		HEIGHT ELLIPSOID METERS	SP NAD83 (1996) IOWA SOUTH HEIGHT			SP NAD83 (1996) IOWA SOUTH HEIGHT		
		LATITUDE (North) DEG MIN SEC	LONGITUDE (West) DEG MIN SEC		NORTHING METERS	EASTING METERS	NAV88 METERS	NORTHING US FEET	EASTING US FEET	NAV88 US FEET
572	763831-3	41 19 55.61251	95 16 11.75034	369.63	149437.297	351854.030	397.27	490278.87	1154374.43	1303.4



NOT TO SCALE

LOCATION DIAGRAM  
 POTTAWATTAMIE COUNTY IOWA  
 GIS Mapping Project  
 GPS Survey Report



**MERRICK**

Engineers & Architects

2450 S. Pearl Street Aurora, Colorado 80014 (303)751-0741

Job Number: 50013142

Date: October 28, 1998