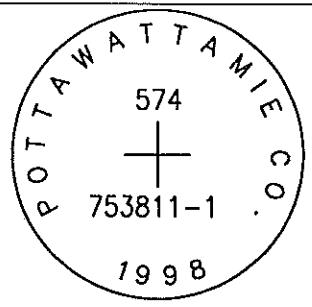


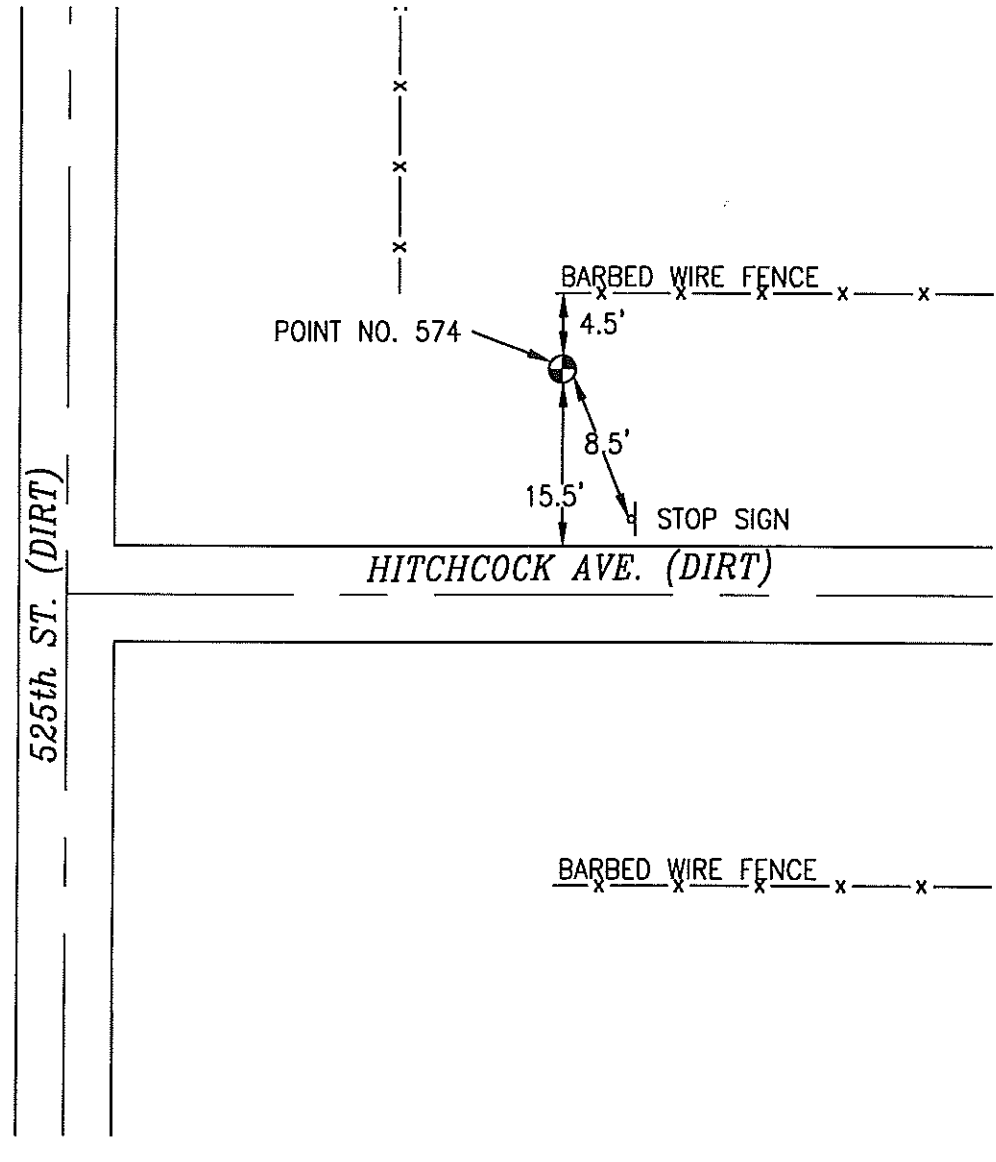
OK

574 753811-1



SET 5/8 INCH DIAMETER ROD WITH 2.5 INCH DIAMETER CAP, 0.5 FEET BELOW GROUND, STAMPED "POTTAWATTAMIE CO. 1998, 574, 753811-1". LOCATED APPROXIMATELY 15.5 FEET NORTH OF THE NORTH EDGE OF HITCHCOCK AVENUE, 8.5 FEET NORTHWEST OF A STOP SIGN, 4.5 FEET SOUTH OF A BARBED WIRE FENCE. ON THE ATLANTIC SW 7.5 MINUTE QUADRANGLE.

PT#	NAME OR DESIGNATION	GEODETTIC NAD83 (1996)		HEIGHT ELLIPSOID METERS	SP NAD83 (1996) IOWA SOUTH HEIGHT			SP NAD83 (1996) IOWA SOUTH HEIGHT		
		LATITUDE (North) DEG MIN SEC	LONGITUDE (West) DEG MIN SEC		NORTHING METERS	EASTING METERS	NAVD88 METERS	NORTHING US FEET	EASTING US FEET	NAVD88 US FEET
574	753811-1	41 18 36.89722	95 11 02.20010	372.72	146866.611	359003.279	400.43	481844.87	1177829.92	1313.7



NOT TO SCALE

LOCATION DIAGRAM
 POTTAWATTAMIE COUNTY IOWA
 GIS Mapping Project
 GPS Survey Report

MERRICK
 Engineers & Architects
 2450 S. Peoria Street Aurora, Colorado 80014 (303)751-0741
 Job Number: 50013142
 Date: November 3, 1998