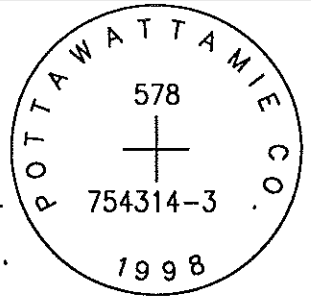


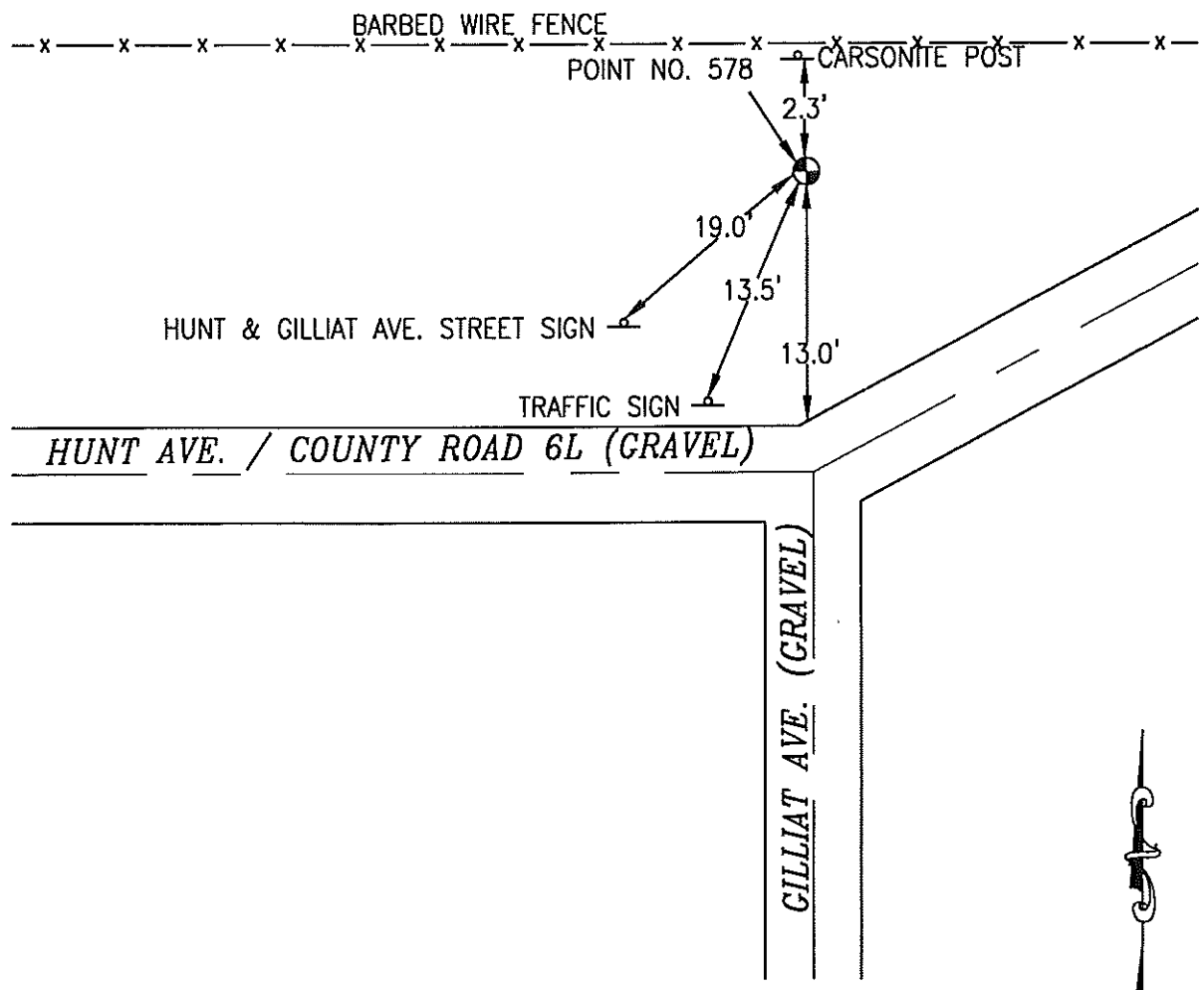
Needs dirt around it

578 754314-3

SET 5/8 INCH DIAMETER ROD WITH 2.5 INCH DIAMETER CAP, 0.5 FEET BELOW GROUND, STAMPED "POTTAWATTAMIE CO. 1998, 578, 754314-3". LOCATED APPROXIMATELY 13 FEET NORTH OF THE NORTH EDGE OF GRAVEL HUNT AVENUE, 19 FEET EAST OF STREET INTERSECTION SIGN (HUNT AVE. AND GILLIAT), 2.3 FEET SOUTH OF ORANGE CARSONITE POST, 13.5 FEET NORTHEAST OF TRAFFIC "T" SIGN. ON THE COUNCIL BLUFFS NORTH 7.5 MINUTE QUADRANGLE.



PT#	NAME OR DESIGNATION	GEODETIC NAD83 (1996)			HEIGHT ELLIPSOID METERS	SP NAD83 (1996) IOWA SOUTH HEIGHT			SP NAD83 (1996) IOWA SOUTH HEIGHT		
		LATITUDE (North) DEG MIN SEC	LONGITUDE (West) DEG MIN SEC			NORTHING METERS	EASTING METERS	NAVD88 METERS	NORTHING US FEET	EASTING US FEET	NAVD88 US FEET
578	754314-3	41 17 37.13790	95 45 34.06823		335.21	146116.043	310776.640	362.89	479382.38	1019606.36	1190.6



NOT TO SCALE

LOCATION DIAGRAM
 POTTAWATTAMIE COUNTY IOWA
 GIS Mapping Project
 GPS Survey Report

MERRICK
 Engineers & Architects
 2450 S. Peoria Street Aurora, Colorado 80014 (303)751-0741
 Job Number: 50013142
 Date: November 3, 1998