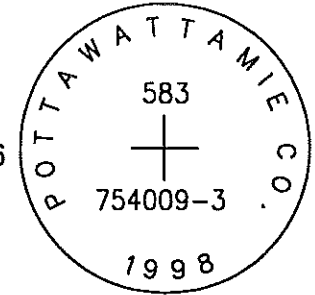


OK

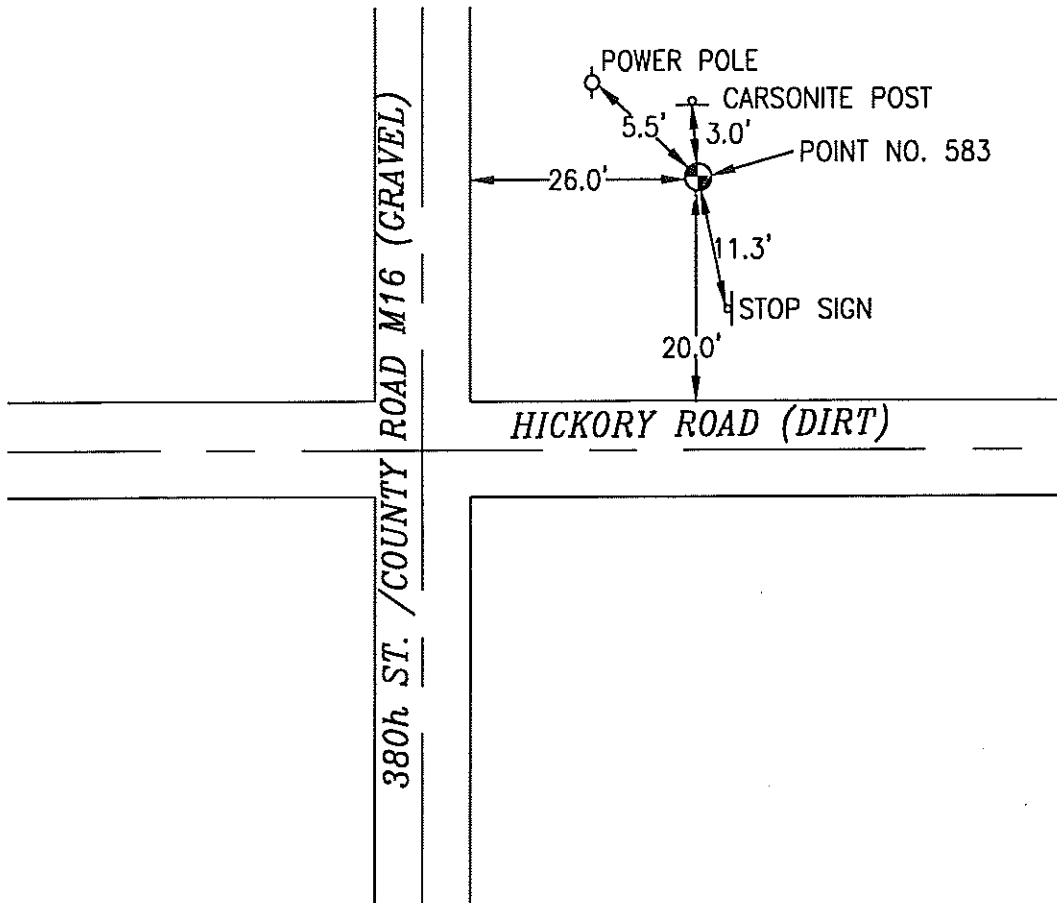
583

754009-3

SET 5/8 INCH DIAMETER ROD WITH 2.5 INCH DIAMETER CAP, 0.2 FEET BELOW GROUND, STAMPED "POTTAWATTAMIE CO. 1998, 583, 754009-3". LOCATED APPROXIMATELY 20 FEET NORTH OF THE NORTH EDGE GRAVEL HICKORY ROAD, 26 FEET EAST OF THE EAST EDGE OF GRAVEL 380TH STREET (COUNTY ROAD M16), 11.3 FEET NORTH OF STOP SIGN, 5.5 FEET SOUTHEAST OF POWERPOLE, 3 FEET SOUTH OF ORANGE CARSONITE POST. ON THE OAKLAND 7.5 MINUTE QUADRANGLE.

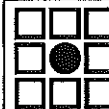


PT#	NAME OR DESIGNATION	GEODETC NAD83 (1996)		HEIGHT ELLIPSOID METERS	SP NAD83 (1996) IOWA SOUTH HEIGHT			SP NAD83 (1996) IOWA SOUTH HEIGHT		
		LATITUDE (North) DEG MIN SEC	LONGITUDE (West) DEG MIN SEC		NORTHING METERS	EASTING METERS	NAVD88 METERS	NORTHING US FEET	EASTING US FEET	NAVD88 US FEET
583	754009-3	41 18 13.42505	95 27 39.24702	340.19	146628.568	335800.951	367.87	481063.89	1101706.95	1206.9



NOT TO SCALE

LOCATION DIAGRAM
 POTTAWATTAMIE COUNTY IOWA
 GIS Mapping Project
 GPS Survey Report



MERRICK

Engineers & Architects

2450 S. Pearla Street Aurora, Colorado 80014 (303)751-0741

Job Number: 50013142

Date: November 3, 1998