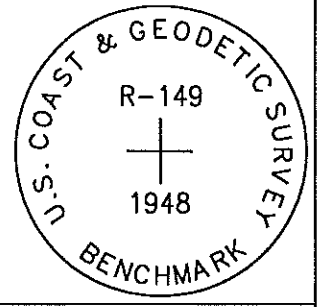


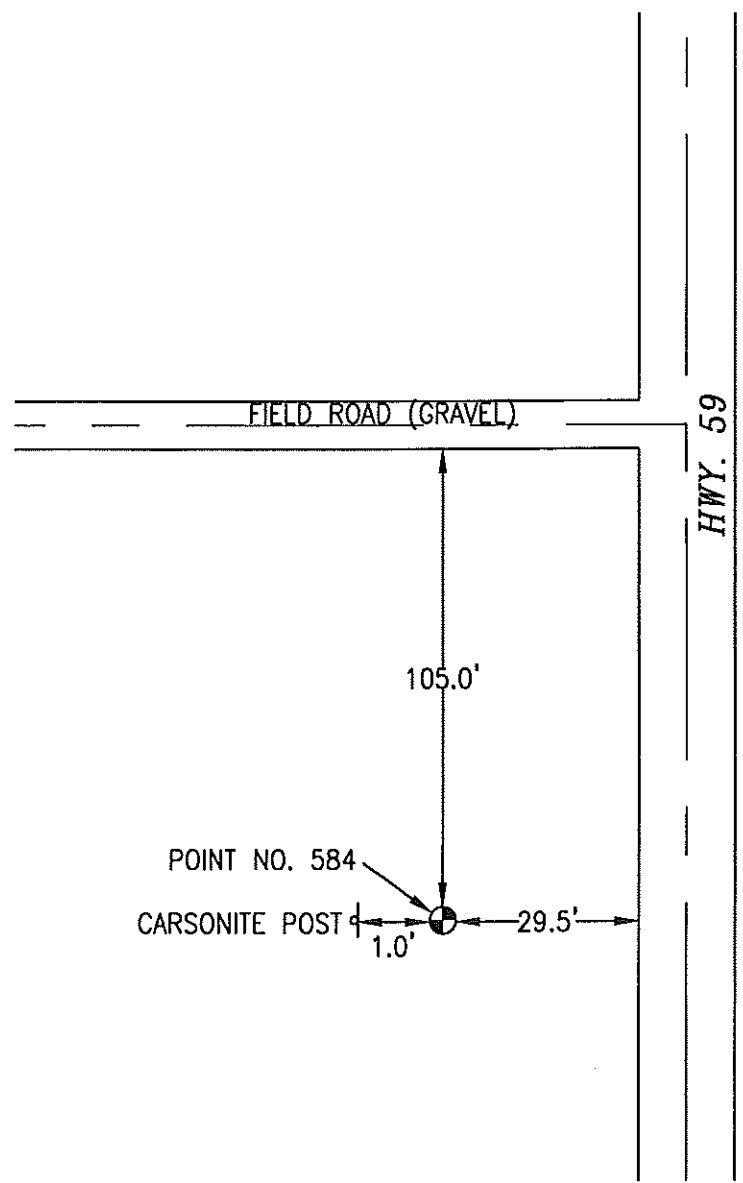
OK Needy County Post

584 R149

FOUND 3.5 INCH DIAMETER BRASS CAP IN CONCRETE POST UP 0.2 FEET ABOVE GROUND, STAMPED "U. S. COAST AND GEODETIC SURVEY BENCHMARK R149 1949". LOCATED APPROXIMATELY 105 FEET SOUTH OF A GRAVEL FIELD ROAD, 29.5 FEET WEST OF THE WEST EDGE OF ASPHALT HIGHWAY 59, 1 FOOT EAST OF A YELLOW CARSONITE POST. SEE NGS DESCRIPTION. ON THE OAKLAND 7.5 MINUTE QUADRANGLE.



PT#	NAME OR DESIGNATION	GEODETC NAD83 (1996)		HEIGHT ELLIPSOID METERS	SP NAD83 (1996) IOWA SOUTH HEIGHT			SP NAD83 (1996) IOWA SOUTH HEIGHT		
		LATITUDE (North) DEG MIN SEC	LONGITUDE (West) DEG MIN SEC		NORTHING METERS	EASTING METERS	NAVD88 METERS	NORTHING US FEET	EASTING US FEET	NAVD88 US FEET
584	R 149	41 17 41.08279	95 24 12.77319	305.55	145524.417	340580.950	333.25	477441.36	1117389.33	1093.3



NOT TO SCALE

LOCATION DIAGRAM
 POTTAWATTAMIE COUNTY IOWA
 GIS Mapping Project
 GPS Survey Report

MERRICK
 Engineers & Architects
 2450 S. Pearla Street Aurora, Colorado 80014 (303)751-0741
 Job Number: 50013142
 Date: November 3, 1998