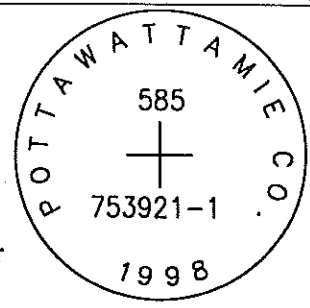


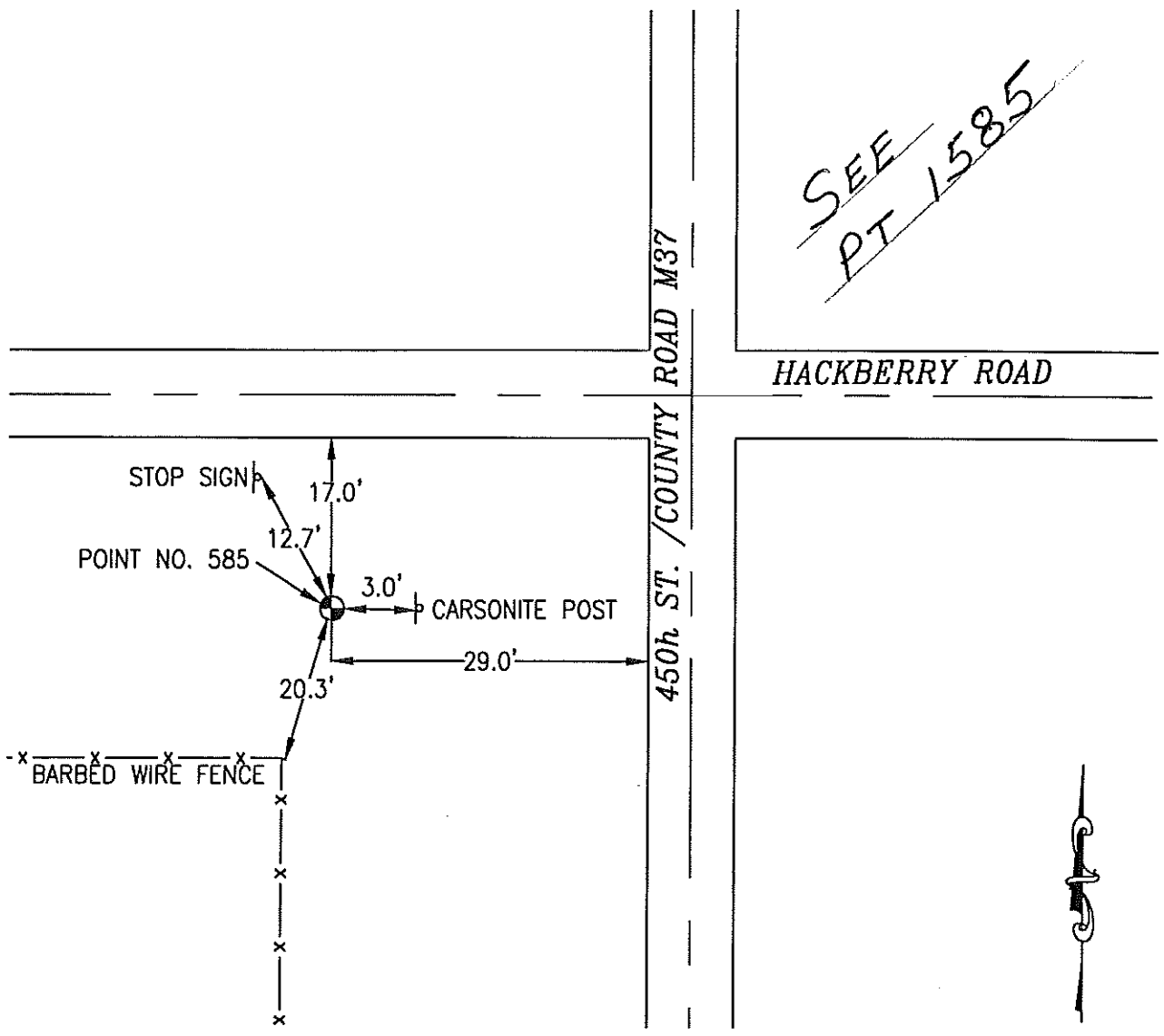
OK

585 753921-1



SET 5/8 INCH DIAMETER ROD WITH 2.5 INCH DIAMETER CAP, 0.5 FEET BELOW GROUND, STAMPED "POTTAWATTAMIE CO. 1998, 585, 753921-1". LOCATED APPROXIMATELY 17 FEET SOUTH OF THE SOUTH EDGE OF GRAVEL HACKBERRY ROAD, 29 FEET WEST OF THE WEST EDGE OF GRAVEL 450TH STREET (COUNTY ROAD M37), 3 FEET WEST OF A ORANGE CARSONITE POST, 12.7 FEET SOUTHWEST OF A STOP SIGN, 20.3 FEET NORTHEAST OF A FENCE CORNER. ON THE AVOCA SE 7.5 MINUTE QUADRANGLE.

PT#	NAME OR DESIGNATION	GEODEIC NAD83 (1996)			HEIGHT ELLIPSOID METERS	SP NAD83 (1996) IOWA SOUTH HEIGHT			SP NAD83 (1996) IOWA SOUTH HEIGHT		
		LATITUDE (North) DEG MIN SEC	LONGITUDE (West) DEG MIN SEC			NORTHING METERS	EASTING METERS	NAVD88 METERS	NORTHING US FEET	EASTING US FEET	NAVD88 US FEET
585	753921-1	41 17 20.24274	95 19 40.05622	357.61	144745.600	346910.822	385.31	474886.19	1138156.59	1264.1	



SEE
PT 1585

NOT TO SCALE

LOCATION DIAGRAM
POTTAWATTAMIE COUNTY IOWA
GIS Mapping Project
GPS Survey Report

MERRICK
Engineers & Architects
2450 S. Peoria Street Aurora, Colorado 80014 (303)751-0741
Job Number: 50013142
Date: November 3, 1998