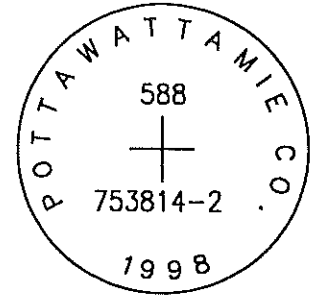


588 753814-2

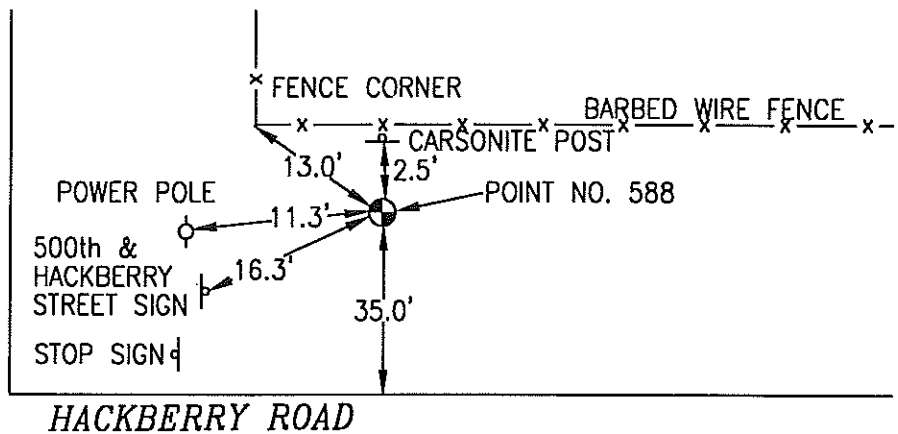
OK

SET 5/8 INCH DIAMETER ROD WITH 2.5 INCH DIAMETER CAP, 0.4 FEET BELOW GROUND, STAMPED "POTTAWATTAMIE CO. 1998, 588, 753814-2". LOCATED APPROXIMATELY 35 FEET NORTH OF THE NORTH EDGE OF GRAVEL HACKBERRY ROAD, 16.3 FEET NORTHEAST OF A STREET INTERSECTION SIGN (525TH STREET AND HACKBERRY ROAD), 11.3 FEET NORTHEAST OF A POWERPOLE, 13 FEET SOUTHEAST OF A FENCE CORNER, 2.5 FEET SOUTH OF AN ORANGE CARSONITE POST. ON THE ATLANTIC SW 7.5 MINUTE QUADRANGLE.



PT#	NAME OR DESIGNATION	GEODETC NAD83 (1996)		HEIGHT ELLIPSOID METERS	SP NAD83 (1996) IOWA SOUTH HEIGHT			SP NAD83 (1996) IOWA SOUTH HEIGHT		
		LATITUDE (North) DEG MIN SEC	LONGITUDE (West) DEG MIN SEC		NORTHING METERS	EASTING METERS	NAVD88 METERS	NORTHING US FEET	EASTING US FEET	NAVD88 US FEET
588	753814-2	41 17 18.83439	95 11 02.17093	348.94	144458.938	358957.341	376.71	473945.70	1177679.21	1235.9

525th ST. / COUNTY ROAD M53



NOT TO SCALE

LOCATION DIAGRAM
 POTTAWATTAMIE COUNTY IOWA
 GIS Mapping Project
 GPS Survey Report

MERRICK
 Engineers & Architects
 2450 S. Peoria Street Aurora, Colorado 80014 (303)751-0741
 Job Number: 50013142
 Date: November 3, 1998