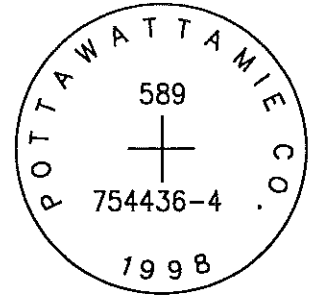


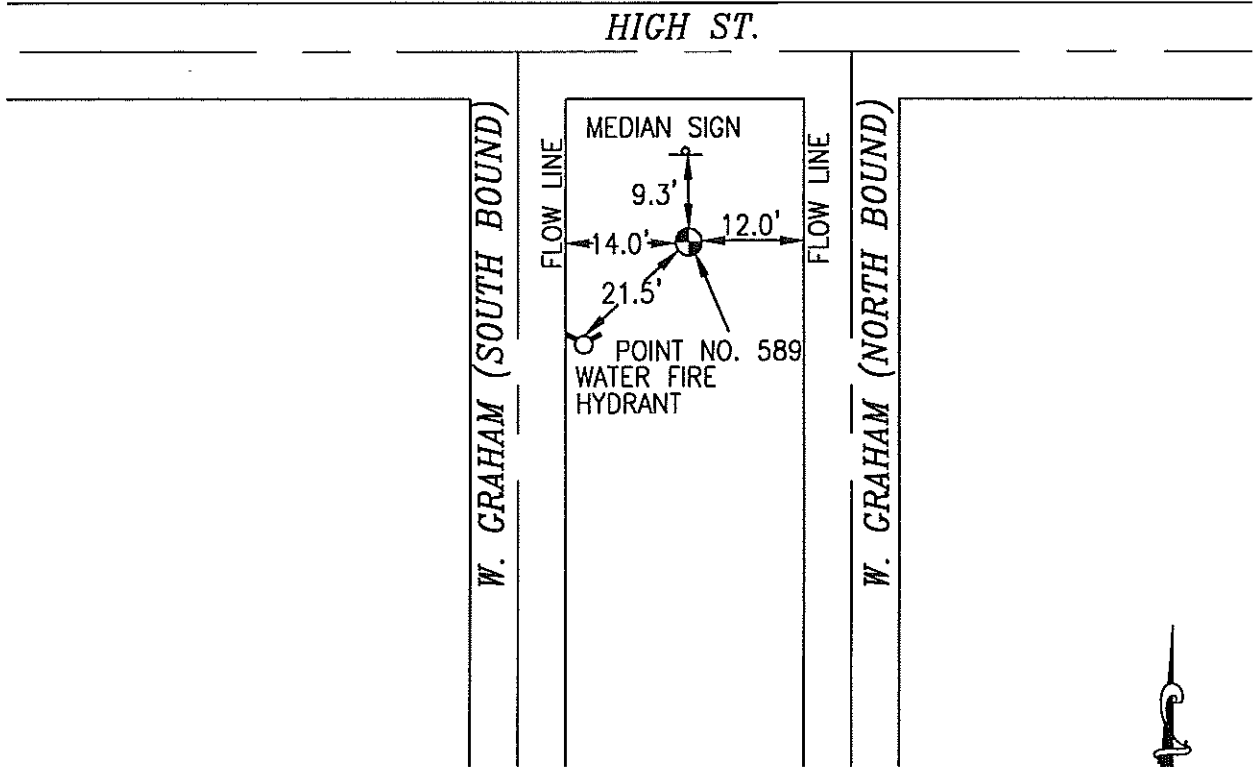
Needs dirt around it

589 754436-4

SET 5/8 INCH DIAMETER ROD WITH 2.5 INCH DIAMETER CAP, 0.2 FEET BELOW GROUND, STAMPED "POTTAWATTAMIE CO. 1998, 589, 754436-4". LOCATED APPROXIMATELY IN THE WEST GRAHAM STREET CENTER MEDIAN AT THE INTERSECTION WITH HIGH STREET, 9.3 FEET SOUTH OF MEDIAN SIGN, 14 FEET EAST OF WEST FLOWLINE OF MEDIAN, 12 FEET WEST OF EAST FLOWLINE OF MEDIAN, 21.5 FEET NORTHEAST OF FIRE HYDRANT. ON THE COUNCIL BLUFFS NORTH 7.5 MINUTE QUADRANGLE.



PT#	NAME OR DESIGNATION	GEODETIC NAD83 (1996)		HEIGHT ELLIPSOID METERS	SP NAD83 (1996) IOWA SOUTH HEIGHT			SP NAD83 (1996) IOWA SOUTH HEIGHT		
		LATITUDE (North) DEG MIN SEC	LONGITUDE (West) DEG MIN SEC		NORTHING METERS	EASTING METERS	NAVD88 METERS	NORTHING US FEET	EASTING US FEET	NAVD88 US FEET
589	754436-4	41 14 45.50041	95 50 47.72089	274.81	141016.451	303339.034	302.32	462651.47	995204.81	991.9



NOT TO SCALE

LOCATION DIAGRAM
 POTTAWATTAMIE COUNTY IOWA
 GIS Mapping Project
 GPS Survey Report



MERRICK

Engineers & Architects

2450 S. Peoria Street Aurora, Colorado 80014 (303)751-0741

Job Number: 50013142

Date: November 3, 1998