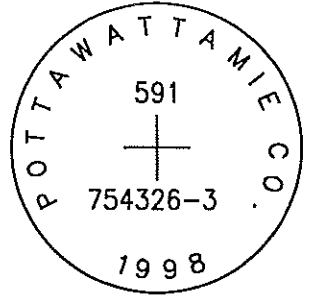


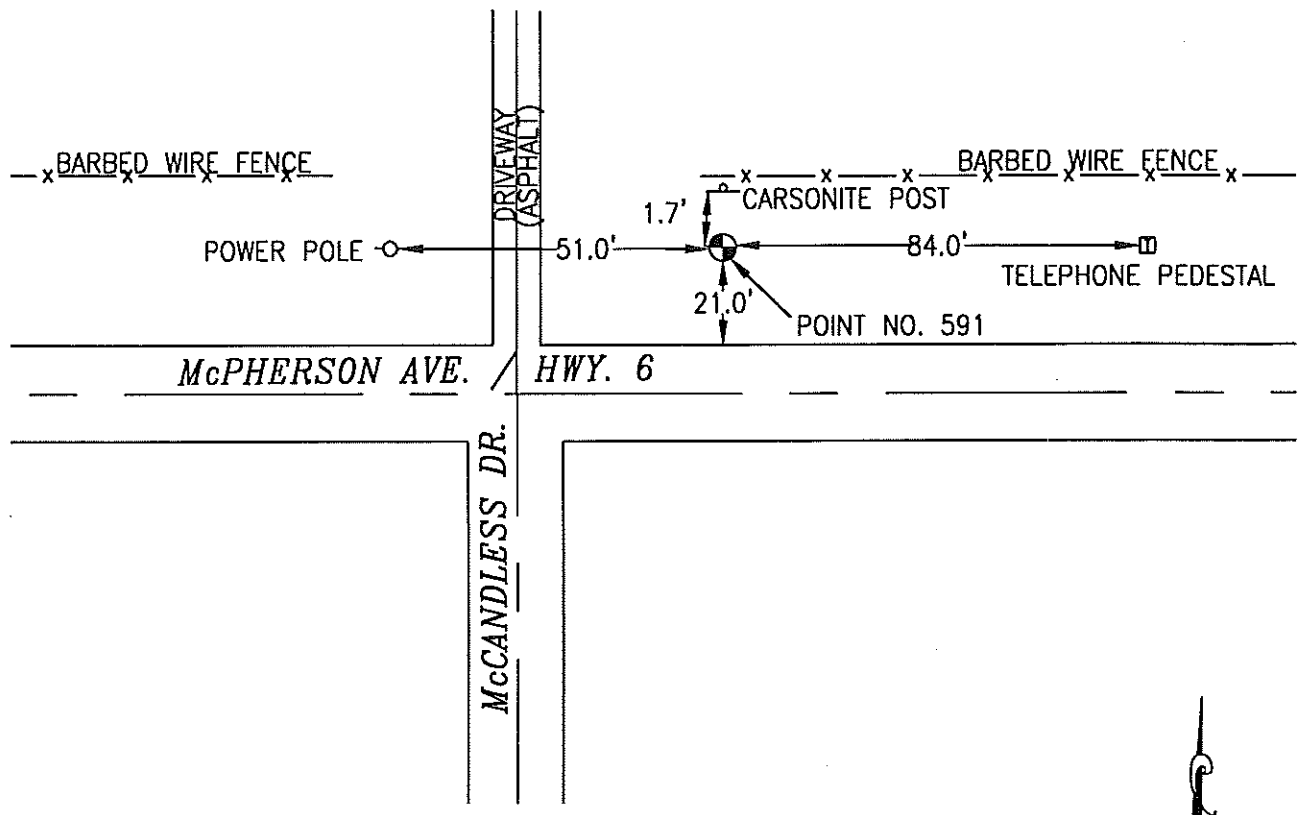
O K

591 754326-3



SET 5/8 INCH DIAMETER ROD WITH 2.5 INCH DIAMETER CAP, 0.3 FEET BELOW GROUND, STAMPED "POTTAWATTAMIE CO. 1998, 591, 754326-3". LOCATED APPROXIMATELY 21 FEET NORTH OF THE NORTH EDGE OF ASPHALT HIGHWAY 6, 51 FEET EAST OF A POWERPOLE, 1.7 FEET SOUTH OF A ORANGE CARSONITE POST, 84 FEET WEST OF A TELEPHONE PEDESTAL, EAST OF THE INTERSECTION OF MCCANDLESS DRIVE (ROAD TO COUNCIL BLUFFS AIRPORT). ON THE COUNCIL BLUFFS NORTH 7.5 MINUTE QUADRANGLE.

PT#	NAME OR DESIGNATION	GEODEIC NAD83 (1996)		HEIGHT ELLIPSOID METERS	SP NAD83 (1996) IOWA SOUTH HEIGHT			SP NAD83 (1996) IOWA SOUTH HEIGHT		
		LATITUDE (North) DEG MIN SEC	LONGITUDE (West) DEG MIN SEC		NORTHING METERS	EASTING METERS	NAVD88 METERS	NORTHING US FEET	EASTING US FEET	NAVD88 US FEET
591	754326-3	41 15 52.57573	95 45 59.14164	339.41	142906.753	310109.452	366.99	468853.24	1017417.43	1204.0



NOT TO SCALE

LOCATION DIAGRAM  
 POTTAWATTAMIE COUNTY IOWA  
 GIS Mapping Project  
 GPS Survey Report

**MERRICK**  
 Engineers & Architects  
 2450 S. Pearla Street Aurora, Colorado 80014 (303)751-0741  
 Job Number: 50013142  
 Date: November 3, 1998