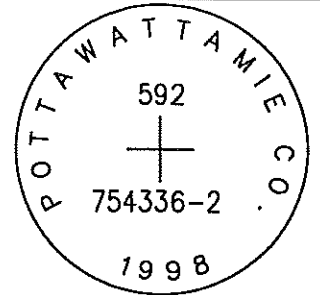


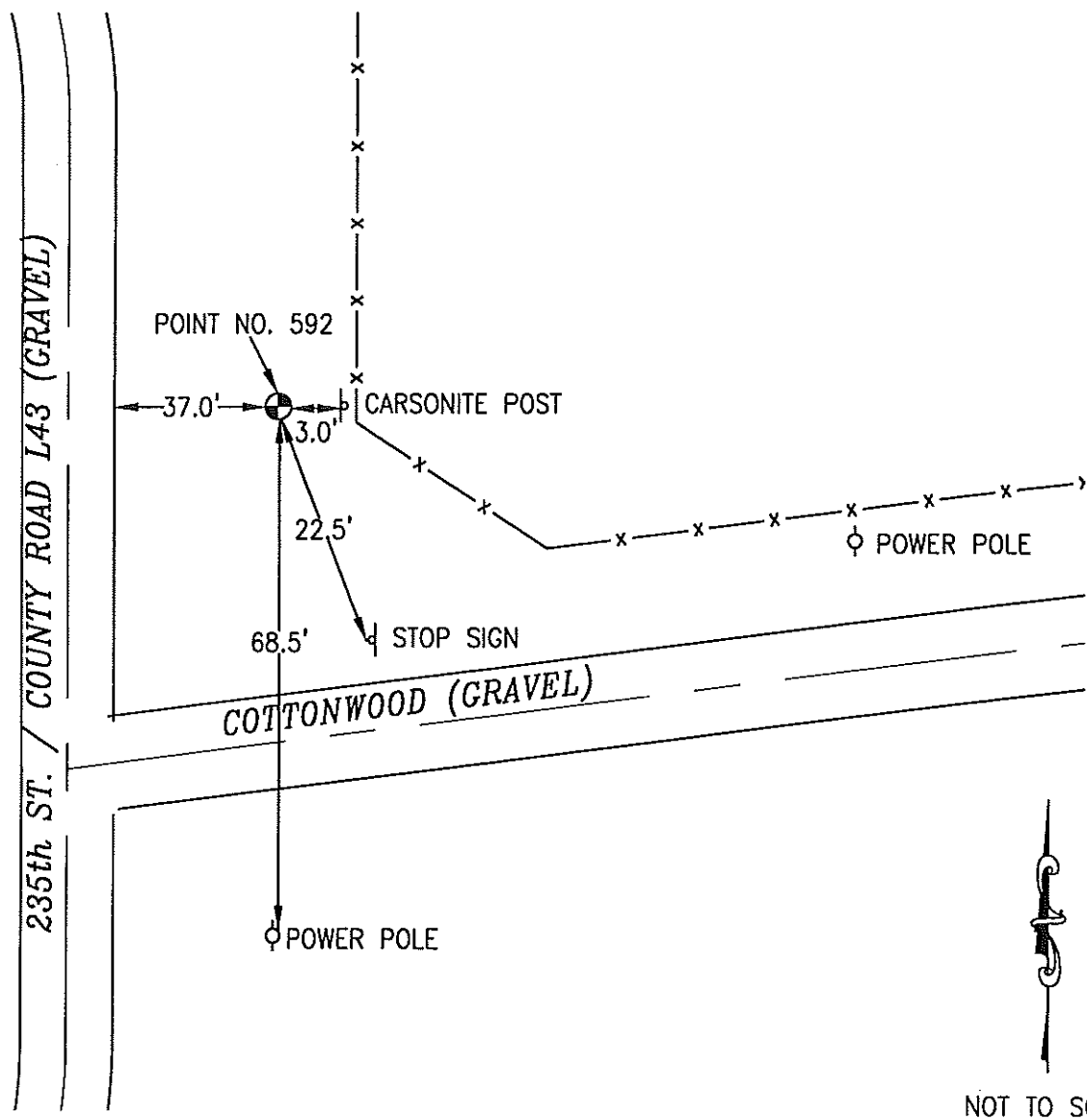
OK

592 754336-2

SET 5/8 INCH DIAMETER ROD WITH 2.5 INCH DIAMETER CAP, 0.4 FEET BELOW GROUND, STAMPED "POTTAWATTAMIE CO. 1998, 592, 754336-2". LOCATED APPROXIMATELY 37 FEET EAST OF THE EAST EDGE OF 235TH STREET (COUNTY ROAD L43), 68.5 FEET NORTH OF A POWERPOLE, 22.5 FEET NORTHWEST OF A STOP SIGN, 3 FEET WEST OF A ORANGE CARSONITE POST. ON THE MCCLELLAND 7.5 MINUTE QUADRANGLE.



PT#	NAME OR DESIGNATION	GEODEIC NAD83 (1996)			HEIGHT ELLIPSOID METERS	SP NAD83 (1996) IOWA SOUTH HEIGHT			SP NAD83 (1996) IOWA SOUTH HEIGHT		
		LATITUDE (North) DEG MIN SEC	LONGITUDE (West) DEG MIN SEC			NORTHING METERS	EASTING METERS	NAVD88 METERS	NORTHING US FEET	EASTING US FEET	NAVD88 US FEET
592	754336-2	41 14 57.68771	95 44 12.55330	306.90	141149.907	312546.033	334.45	463089.32	1025411.44	1097.3	



NOT TO SCALE

LOCATION DIAGRAM
 POTTAWATTAMIE COUNTY IOWA
 GIS Mapping Project
 GPS Survey Report

MERRICK
 Engineers & Architects
 2450 S. Peoria Street Aurora, Colorado 80014 (303)751-0741
 Job Number: 50013142
 Date: November 3, 1998