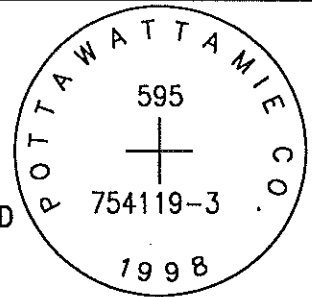


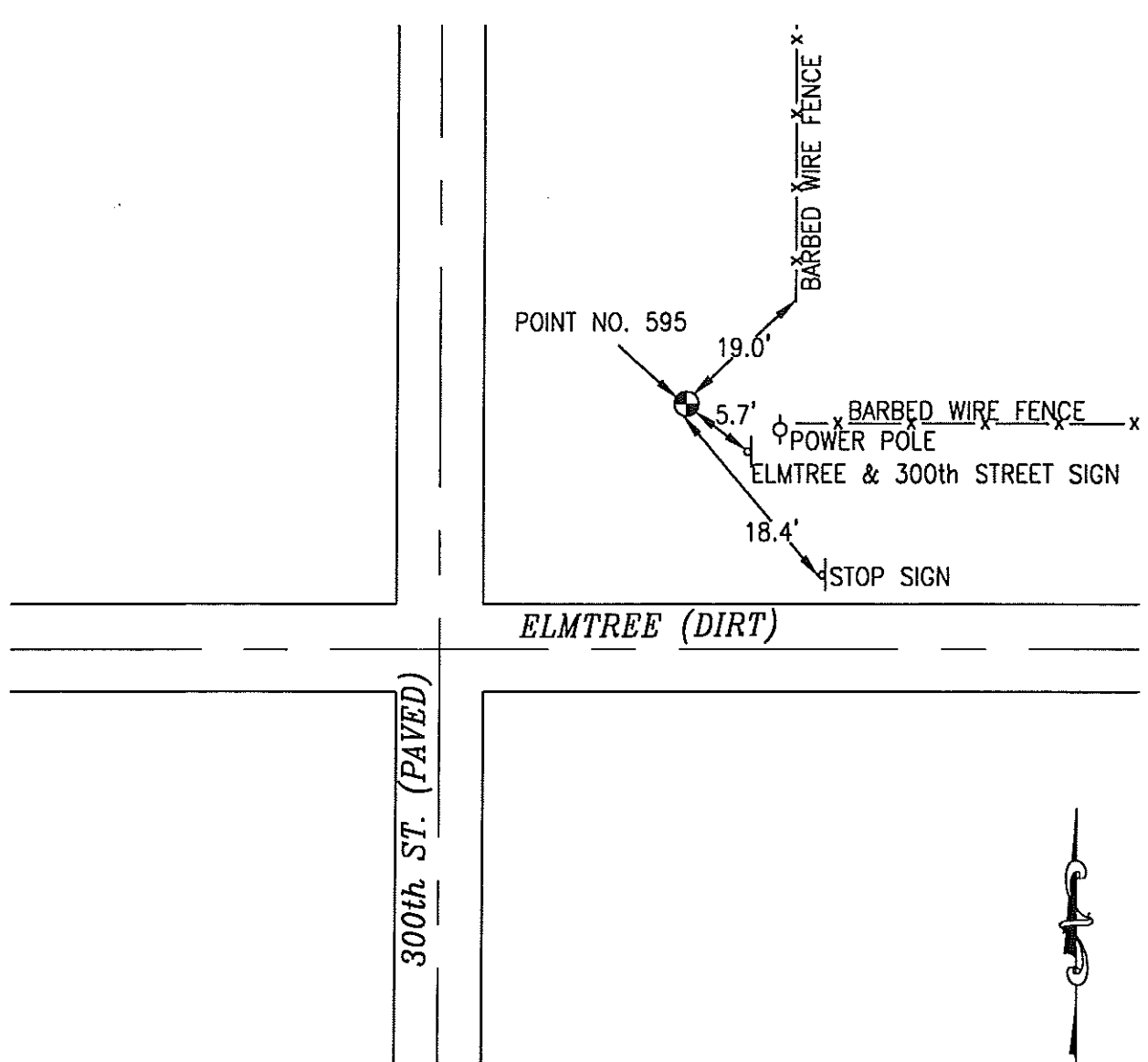
ok

595 754119-3

SET 5/8 INCH DIAMETER ROD WITH 2.5 INCH DIAMETER CAP, 0.2 FEET BELOW GROUND, STAMPED "POTTAWATTAMIE CO. 1998, 595, 754119-3". LOCATED APPROXIMATELY 18.4 FEET NORTHWEST OF A STOP SIGN, 19 FEET SOUTHWEST OF THE END OF A FENCE, 5.7 FEET WEST OF STREET INTERSECTION SIGN (300TH AND ELMTREE), IN THE NORTHEAST CORNER OF THE INTERSECTION. ON THE TAYLOR 7.5 MINUTE QUADRANGLE.



PT#	NAME OR DESIGNATION	GEODETIC NAD83 (1996)		HEIGHT ELLIPSOID METERS	SP NAD83 (1996) IOWA SOUTH HEIGHT			SP NAD83 (1996) IOWA SOUTH HEIGHT		
		LATITUDE (North) DEG MIN SEC	LONGITUDE (West) DEG MIN SEC		NORTHING METERS	EASTING METERS	NAVD88 METERS	NORTHING US FEET	EASTING US FEET	NAVD88 US FEET
595	754119-3	41 16 30.15815	95 36 45.62107	351.16	143741.484	323017.260	378.79	471591.85	1059765.79	1242.7



NOT TO SCALE

LOCATION DIAGRAM
 POTTAWATTAMIE COUNTY IOWA
 GIS Mapping Project
 GPS Survey Report

MERRICK
 Engineers & Architects
 2450 S. Pearl Street Aurora, Colorado 80014 (303)751-0741
 Job Number: 50013142
 Date: November 3, 1998