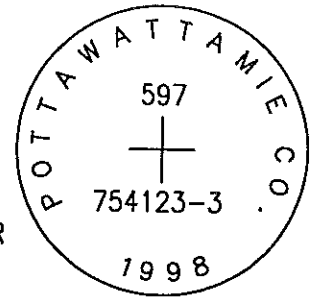


597

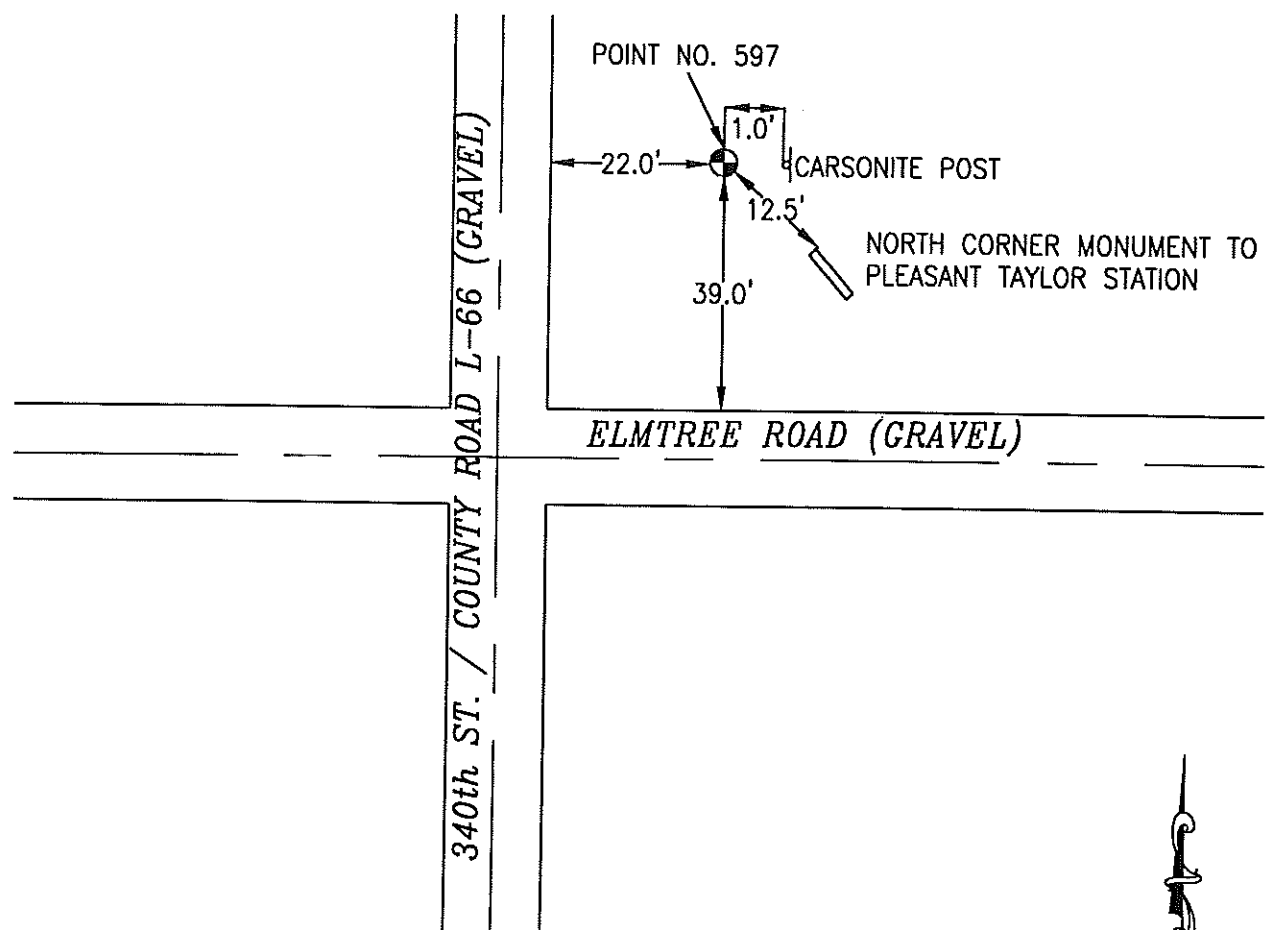
754123-3

OK

SET 5/8 INCH DIAMETER ROD WITH 2.5 INCH DIAMETER CAP, 0.3 FEET BELOW GROUND, STAMPED "POTTAWATTAMIE CO. 1998, 597, 754123-3". LOCATED APPROXIMATELY 22 FEET EAST OF THE EAST EDGE OF 340TH STREET (COUNTY ROAD L66), 39 FEET NORTH OF THE NORTH EDGE OF ELMTREE ROAD, 12.5 FT NORTHWEST OF THE NORTH CORNER OF STONE MONUMENT TO "PLEASANT TAYLOR STATION", 1 FOOT WEST OF ORANGE CARSONITE POST. ON THE TAYLOR 7.5 MINUTE QUADRANGLE.



| PT# | NAME OR DESIGNATION | GEODETC NAD83 (1996) | | HEIGHT ELLIPSOID METERS | SP NAD83 (1996) IOWA SOUTH HEIGHT | | | SP NAD83 (1996) IOWA SOUTH HEIGHT | | |
|-----|---------------------|------------------------------|------------------------------|-------------------------|-----------------------------------|----------------|---------------|-----------------------------------|-----------------|----------------|
| | | LATITUDE (North) DEG MIN SEC | LONGITUDE (West) DEG MIN SEC | | NORTHING METERS | EASTING METERS | NAVD88 METERS | NORTHING US FEET | EASTING US FEET | NAVD88 US FEET |
| 597 | 754123-3 | 41 16 29.92185 | 95 32 12.42536 | 334.16 | 143582.561 | 329373.167 | 361.80 | 471070.45 | 1080618.47 | 1187.0 |



NOT TO SCALE

LOCATION DIAGRAM
 POTTAWATTAMIE COUNTY IOWA
 GIS Mapping Project
 GPS Survey Report

MERRICK
 Engineers & Architects
 2450 S. Pearla Street Aurora, Colorado 80014 (303)751-0741
 Job Number: 50013142
 Date: November 4, 1998